

11th June 2009

Theme: Children, Education and Skills

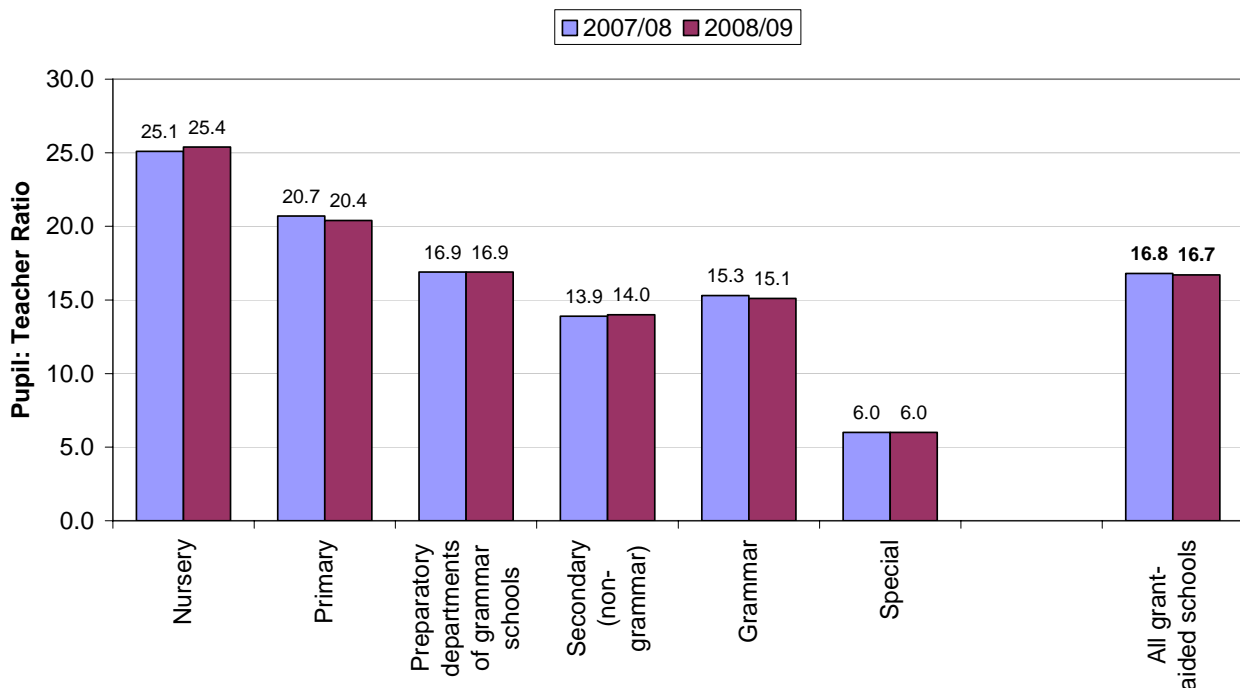
STATISTICAL PRESS RELEASE

Pupil: Teacher Ratios in Grant Aided Schools in Northern Ireland 2008/09

Key Points

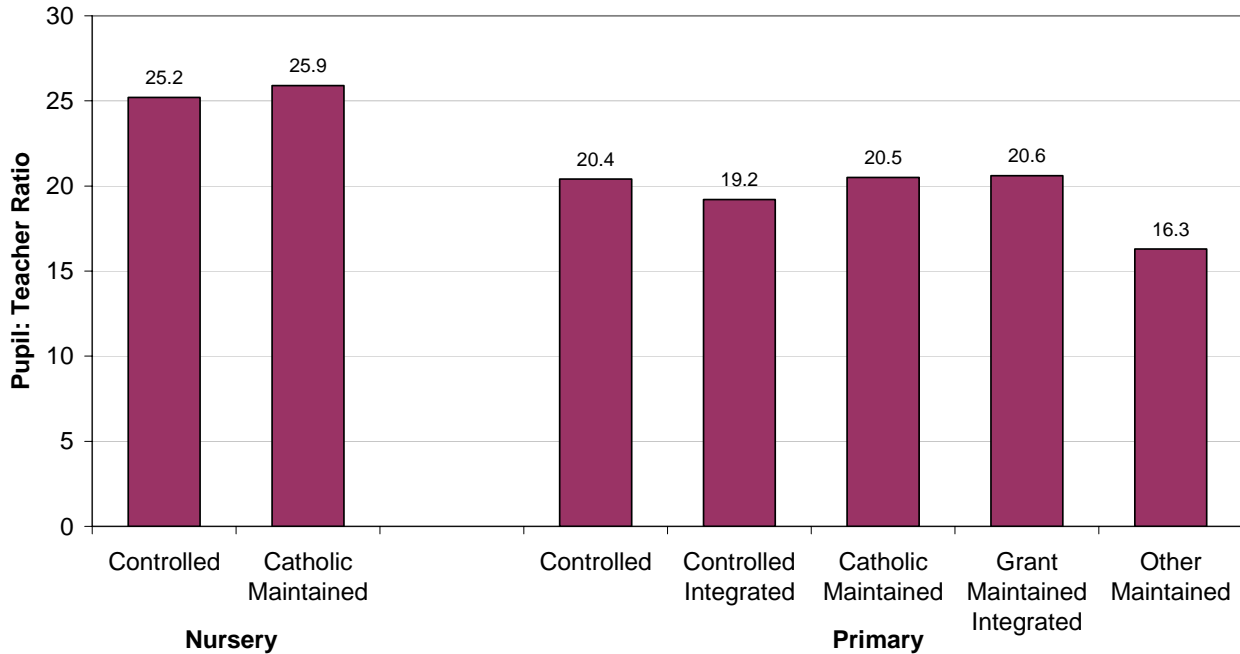
- The overall Pupil: Teacher Ratio (PTR) in 2008/09 is 16.7, a decrease of 0.1 from 16.8 in 2007/08 (Figure 1).
- The PTRs for primary schools and for grammar schools have decreased. The PTR for primary schools is 20.4, a decrease of 0.3 from 20.7 in 2007/08. The PTR for grammar schools is 15.1, a decrease of 0.2 from 15.3 in 2007/08 (Figure 1).
- The PTRs for nursery schools and for secondary (non-grammar) schools have increased. The PTR for nursery schools has risen by 0.3 to 25.4. The PTR for secondary (non-grammar) schools has risen by 0.1 to 14.0 (Figure 1).
- The PTRs for preparatory departments of grammar schools and for special schools have remained the same, at 16.9 and 6.0 respectively (Figure 1).

Figure 1: PTR by school sector, 2007/08-2008/09



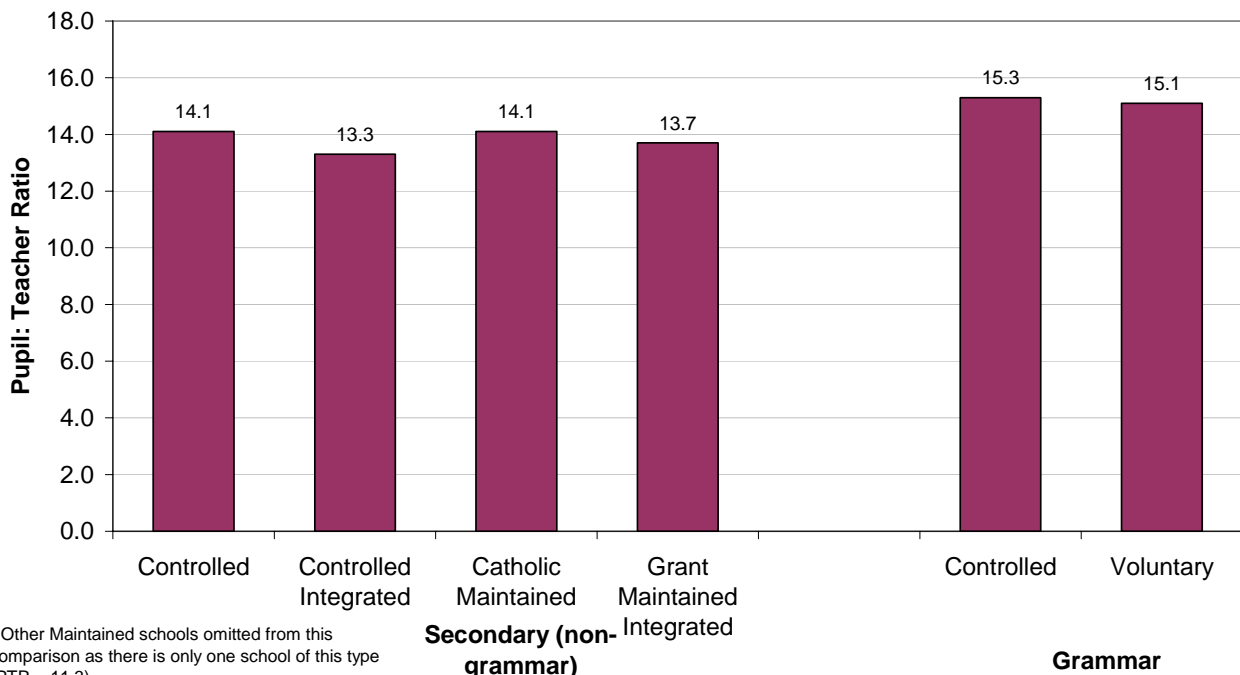
- Within the nursery sector, Catholic Maintained schools have the higher PTR, at 25.9 (Figure 2).
- Within the primary sector, Grant Maintained Integrated schools have the highest PTR at 20.6. Other Maintained schools (16.3) have the lowest (Figure 2).

Figure 2: PTR by management type (nursery and primary schools)



- Within the secondary (non-grammar) sector, Controlled and Catholic Maintained schools have the highest PTRs at 14.1; at 13.3, Controlled Integrated schools have the lowest. The PTR in Voluntary grammar schools (15.1) is lower than in Controlled grammar schools (15.3) (Figure 3).

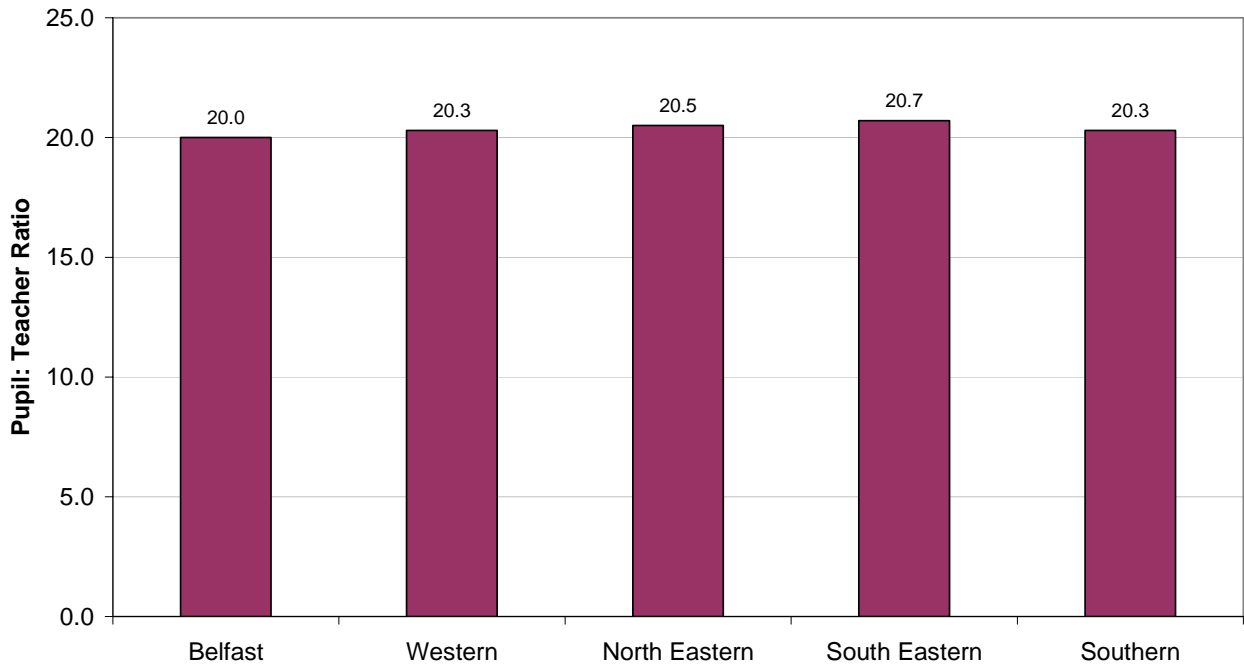
Figure 3: PTR by management type (post-primary schools)¹



¹ Other Maintained schools omitted from this comparison as there is only one school of this type (PTR = 11.3)

- The Belfast Board has the lowest PTR for primary schools at 20.0. The South Eastern Board has the highest PTR for primary schools (20.7) (Figure 4).

Figure 4: PTR by Education and Library Board (primary schools)



- The Southern Board has the highest PTR for post-primary schools at 14.6 (Figure 5).

Figure 5: PTR by Education and Library Board (post-primary schools)

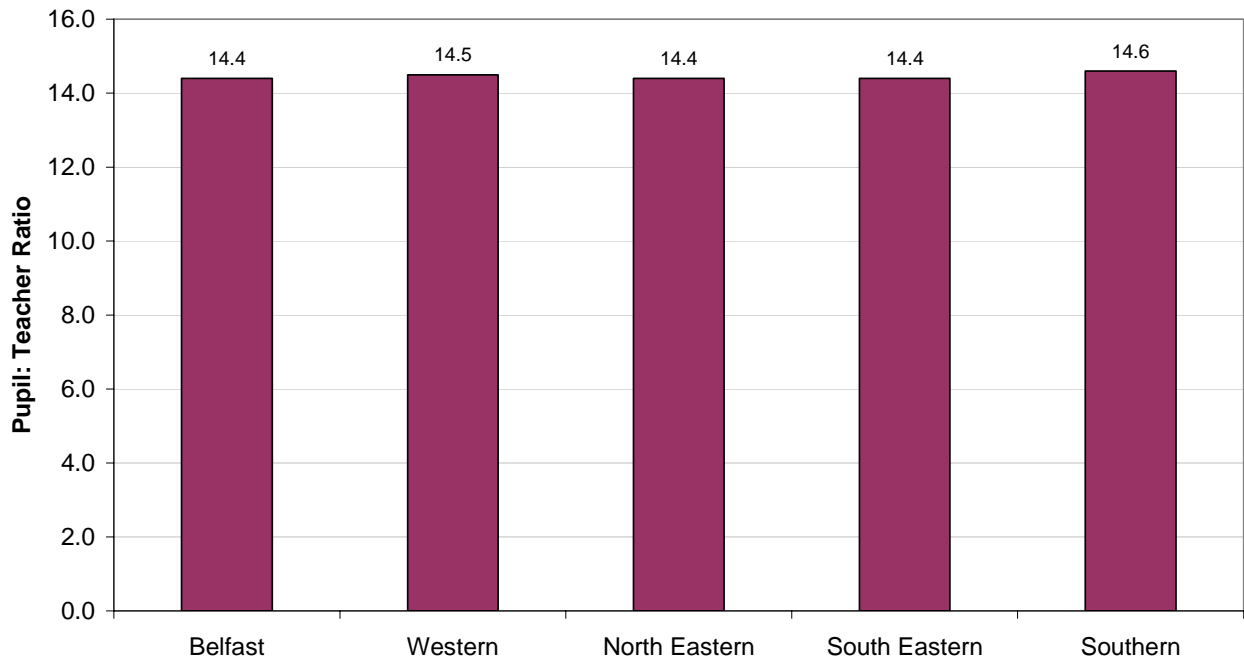
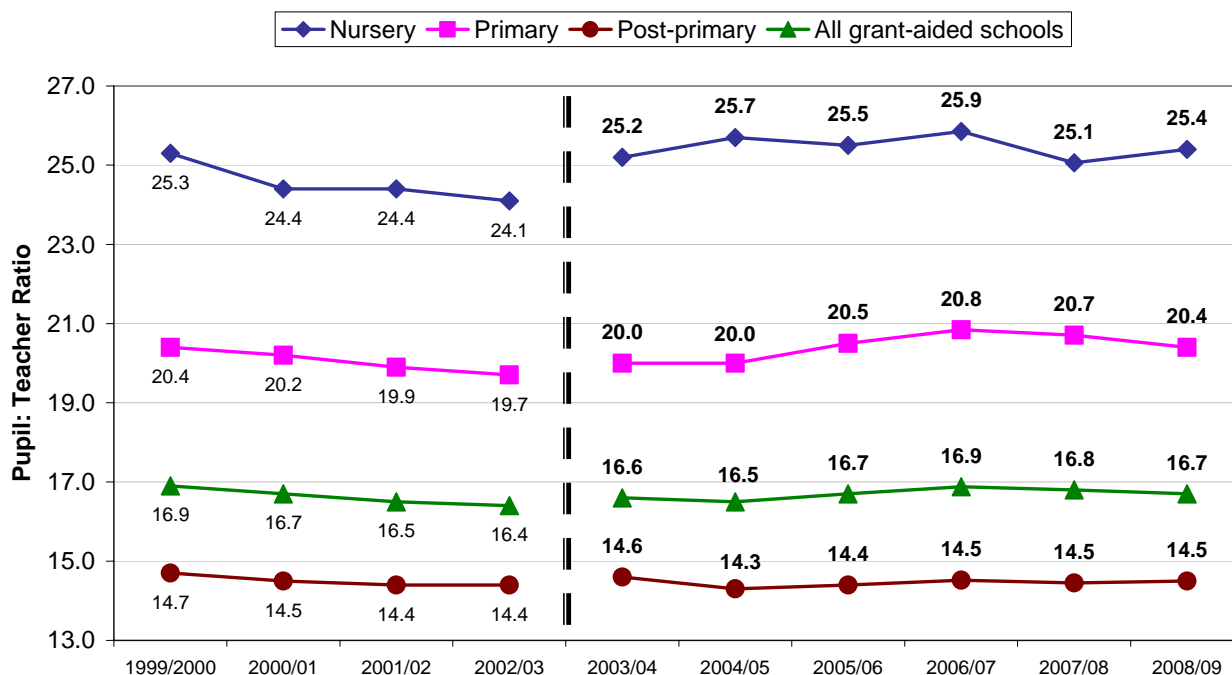


Figure 6: Pupil: Teacher Ratio, 1999/2000 - 2008/09¹



¹ Since 2003/04 the PTR has been compiled using teacher data collected on a new and improved basis which involves verification with schools. See Notes to Editors, paragraph 9.

- The overall PTR is lower than in England, but greater than in Scotland (Figure 7). Direct comparisons, however, are not advised, as Pupil: Teacher Ratios may be dependent on other factors such as distributions of school and class sizes. There is also variation in the coverage and scope of data collection.

Figure 7. Pupil: Teacher Ratios in NI, England and Scotland

| Sector | NI | England ¹ | Scotland ² |
|----------------------------|-------------|----------------------|-----------------------|
| Nursery | 25.4 | 16.6 | n/a |
| Primary | 20.4 | 21.4 | 16.0 |
| Post-primary | 14.5 | 15.9 | 11.8 |
| Overall³ | 16.7 | 16.9 | 13.1 |

¹ Source: DCSF, 'School Workforce in England, January 2009 (provisional)',

http://www.dcsf.gov.uk/rsgateway/DB/SFR/s000844/SFR09_2009.pdf

² Source: Scottish Executive, 'Teachers in Scotland, 2008' (measured on 22 September 2008), <http://www.scotland.gov.uk/Topics/Statistics/Browse/School-Education/TrendTeacherNumbers>. Figures for pre-school are not available.

³ Excludes independent schools and FE sector.

Tables

- Table 1** Pupil: Teacher Ratios by school type and management type: 1999/2000 – 2008/09
- Table 2** Pupil: Teacher Ratios by Education and Library Board and school type: 1999/2000 – 2008/09
- Table 3** Pupil: Teacher Ratios by Education and Library Board, school type and management type: 2008/09

Notes to Editors

National Statistics

1. These statistics are classified as National Statistics. National Statistics are produced to high professional standards set out in the Code of Practice for Official Statistics. They undergo regular assurance reviews to ensure that they meet customer needs. They are produced free from any political interference.
2. For general enquiries about National Statistics, contact the National Statistics Public Enquiry Service by
telephone: 0845 601 3034
minicom: 01633 812399
e-mail: info@statistics.gov.uk
fax: 01633 652747
written correspondence: Customer Contact Centre,
Room 1.015
Office for National Statistics
Cardiff Road
NEWPORT NP10 8XG
3. You can also find National Statistics on the Internet: www.statistics.gov.uk

Local Management of Schools

4. Since the introduction of Local Management of Schools (LMS) in 1991/92, all secondary schools have had fully delegated budgets, which means that decisions on staffing levels are taken by the schools themselves. Since 1998/99, all primary schools have also had fully delegated budgets.

Pupil: Teacher Ratio: teacher numbers

5. The teacher numbers are based on a reference week in the autumn term: 24-28 November 2008.
6. The following types of teacher are included when calculating the Pupil: Teacher Ratio:
 - full-time teachers;
 - part-time teachers;
 - temporary teachers filling a vacancy (pending the appointment of a permanent teacher); and
 - teachers paid on a 1/365th basis (these are temporary teachers appointed for a period of not less than one year).

7. Numbers are expressed as full-time equivalents, with part-time hours being converted on the basis that a full-time working week is 32.4 hours.
8. Excluded from the teacher element of the calculation are:
 - substitute teachers;
 - peripatetic teachers; and
 - classroom support staff.
9. Prior to 2003/04, the figures for nursery, primary, secondary (non-grammar) and special schools were extracted from the computerised teachers' payroll system, whilst the figures for grammar schools were obtained from an aggregate statistical return completed by the schools. Now, every grant-aided school is sent a list of teachers derived from the computerised teachers' payroll system, and asked to mark any amendments. This checking process was introduced from 2003/04 for nursery, primary, secondary (non-grammar) and special schools, from 2005/06 for controlled grammar schools, and from 2007/08 for voluntary grammar schools. The net effect of this change in 2003/04 was that the number of teachers as verified by schools was some 400 lower than the number of teachers extracted from the payroll system, because, for example, substitute teachers had been incorrectly recorded.

Pupil: Teacher Ratio: pupil numbers

10. Pupil figures are taken from the Annual Schools' Census conducted in October 2008.
11. Pupil figures are expressed as full-time equivalents. A pupil on a part-time attendance mode is counted as 0.5 of a full-time pupil.

Comparisons

12. Comparisons of PTRs between Education and Library Boards, management types and territories must be interpreted with caution, as differences may reflect other factors such as distributions of school and class sizes, and the proportions of schools of each type (nursery, primary and secondary). There is also variation in the coverage and scope of data collection between territories.

Further enquiries

13. Further analyses relating to PTRs and teacher numbers can be found on the DE website at http://www.deni.gov.uk/index/32-statisticsandresearch_pg.htm. Statistics on school numbers and enrolment, participation rates, and school leavers' qualifications and destinations may also be accessed via this website.

14. For more details about the statistics contained in this Press Release, or to request bespoke analyses of PTR or teacher data, please contact:

Statistics and Research Branch
Department of Education
Rathgael House
Balloo Road
BANGOR BT19 7PR

Tel. 028 9127 9638
Fax 028 9127 9594
Email statistics@deni.qsi.gov.uk

15. DE Statistical Press Releases can be accessed on the DE website at http://www.deni.gov.uk/index/32-statisticsandresearch_pg/32_statistical_publications-indexofstatisticalpublications_pg/32_statistical_publications_pressreleases_pg.htm

16. Press enquiries should be made to the Department's Press Office at the same address, telephone 028 9127 9701.

TABLE 1. PUPIL: TEACHER RATIOS BY SCHOOL TYPE AND MANAGEMENT TYPE: 1999/2000 - 2008/09

| School Type | Management Type | Unverified basis | | | | | New (verified) basis ¹ | | | | | |
|---------------------------------------------|------------------------------------|------------------|-------------|-------------|-------------|-------------|-----------------------------------|-------------|-------------|-------------|-------------|-------------|
| | | 1999/00 | 2000/01 | 2001/02 | 2002/03 | 2003/04 | 2003/04 | 2004/05 | 2005/06 | 2006/07 | 2007/08 | 2008/09 |
| Nursery | Controlled | 25.3 | 24.3 | 23.9 | 23.5 | 24.3 | 25.2 | 25.5 | 25.6 | 25.8 | 24.9 | 25.2 |
| | Catholic Maintained | 25.1 | 24.8 | 25.5 | 25.2 | 24.5 | 25.1 | 26.1 | 25.4 | 26.0 | 25.3 | 25.9 |
| | All grant-aided nursery | 25.3 | 24.4 | 24.4 | 24.1 | 24.4 | 25.2 | 25.7 | 25.5 | 25.9 | 25.1 | 25.4 |
| Primary ² | Controlled | 20.8 | 20.4 | 20.2 | 20.0 | 19.7 | 20.3 | 20.2 | 20.6 | 20.8 | 20.7 | 20.4 |
| | Controlled Integrated | 18.7 | 17.6 | 18.4 | 17.8 | 17.3 | 17.8 | 18.4 | 18.4 | 19.5 | 19.0 | 19.2 |
| | Catholic Maintained | 20.0 | 20.0 | 19.7 | 19.4 | 19.2 | 19.8 | 19.9 | 20.5 | 21.0 | 20.9 | 20.5 |
| | Grant Maintained Integrated | 20.5 | 20.6 | 19.8 | 20.7 | 20.9 | 21.5 | 20.9 | 20.8 | 21.2 | 20.5 | 20.6 |
| | Other Maintained | 18.1 | 18.4 | 17.2 | 17.8 | 17.7 | 17.6 | 18.2 | 17.4 | 17.1 | 16.7 | 16.3 |
| All grant-aided primary | 20.4 | 20.2 | 19.9 | 19.7 | 19.4 | 20.0 | 20.0 | 20.5 | 20.8 | 20.7 | 20.4 | |
| Preparatory departments of grammar schools | Controlled | 18.5 | 17.9 | 18.4 | 18.1 | 17.0 | 17.0 | 16.8 | 18.6 | 16.6 | 17.3 | 17.8 |
| | Voluntary | 17.4 | 16.4 | 16.6 | 17.1 | 17.0 | 17.0 | 17.4 | 17.3 | 16.8 | 16.8 | 16.7 |
| | All grant-aided preparatory | 17.5 | 16.6 | 16.9 | 17.2 | 17.0 | 17.0 | 17.3 | 17.5 | 16.8 | 16.9 | 16.9 |
| Secondary (excluding grammar) | Controlled | 14.3 | 14.1 | 14.0 | 13.8 | 13.8 | 14.2 | 13.9 | 14.1 | 14.2 | 13.9 | 14.1 |
| | Controlled Integrated | 13.6 | 13.5 | 13.1 | 13.3 | 13.6 | 13.7 | 13.4 | 13.7 | 13.3 | 13.0 | 13.3 |
| | Catholic Maintained | 14.2 | 13.9 | 13.9 | 13.9 | 13.8 | 14.1 | 13.7 | 13.8 | 13.9 | 14.0 | 14.1 |
| | Grant Maintained Integrated | 13.0 | 13.1 | 13.0 | 13.5 | 13.8 | 14.2 | 14.1 | 13.9 | 14.0 | 13.9 | 13.7 |
| | Other Maintained | 12.1 | 11.6 | 11.2 | 10.5 | 11.5 | 11.5 | 13.4 | 12.7 | 13.1 | 13.7 | 11.3 |
| All grant-aided secondary | 14.1 | 13.9 | 13.8 | 13.8 | 13.8 | 14.1 | 13.8 | 13.9 | 14.0 | 13.9 | 14.0 | |
| Grammar | Controlled | 15.5 | 15.4 | 15.4 | 15.7 | 15.5 | 15.5 | 15.4 | 15.5 | 15.6 | 15.7 | 15.3 |
| | Voluntary | 15.6 | 15.4 | 15.2 | 15.2 | 15.2 | 15.2 | 15.1 | 15.2 | 15.2 | 15.2 | 15.1 |
| | All grant-aided grammar | 15.6 | 15.4 | 15.3 | 15.3 | 15.2 | 15.2 | 15.2 | 15.3 | 15.3 | 15.3 | 15.1 |
| All grant-aided post-primary schools | 14.7 | 14.5 | 14.4 | 14.4 | 14.3 | 14.6 | 14.3 | 14.4 | 14.5 | 14.5 | 14.5 | |
| Special (excluding hospital schools) | Controlled | 6.3 | 6.0 | 6.0 | 6.1 | 6.0 | 6.0 | 6.0 | 6.0 | 6.0 | 6.2 | 6.1 |
| | Catholic Maintained | 5.0 | 4.8 | 5.3 | 5.2 | 4.4 | 4.6 | 4.7 | 5.1 | 5.3 | 5.2 | 5.1 |
| | Other Maintained | 4.3 | 4.3 | 3.7 | 3.6 | 3.8 | 3.8 | 3.5 | 3.2 | 3.8 | 2.9 | 3.4 |
| All grant-aided special | 6.2 | 5.9 | 5.9 | 6.0 | 5.8 | 5.9 | 5.8 | 5.8 | 5.9 | 6.0 | 6.0 | |
| All grant-aided schools | Controlled | 17.1 | 16.8 | 16.6 | 16.4 | 16.3 | 16.7 | 16.5 | 16.8 | 16.9 | 16.8 | 16.7 |
| | Controlled Integrated | 15.5 | 15.0 | 14.9 | 14.9 | 15.1 | 15.4 | 15.5 | 15.7 | 15.9 | 15.4 | 15.9 |
| | Catholic Maintained | 17.5 | 17.3 | 17.2 | 17.0 | 16.8 | 17.3 | 17.1 | 17.5 | 17.8 | 17.8 | 17.7 |
| | Grant Maintained Integrated | 15.1 | 15.1 | 14.8 | 15.4 | 15.7 | 16.1 | 15.9 | 15.8 | 16.0 | 15.8 | 15.6 |
| | Other Maintained | 13.9 | 14.0 | 13.6 | 14.1 | 14.5 | 14.4 | 15.2 | 14.7 | 15.1 | 14.7 | 14.2 |
| | Voluntary | 15.7 | 15.4 | 15.3 | 15.3 | 15.2 | 15.2 | 15.2 | 15.3 | 15.2 | 15.2 | 15.2 |
| | Grand total | 16.9 | 16.7 | 16.5 | 16.4 | 16.3 | 16.6 | 16.5 | 16.7 | 16.9 | 16.8 | 16.7 |

¹ method of data collection changed in 2003/04: see Notes for Editors

² includes pupils and teachers in nursery classes

TABLE 2. PUPIL: TEACHER RATIOS BY EDUCATION AND LIBRARY BOARD AND SCHOOL TYPE: 1999/2000 - 2008/09

| Board | School type | Unverified basis | | | | | New (verified) basis ¹ | | | | | |
|-------------------------|--------------------------------------------|------------------|-------------|-------------|-------------|-------------|-----------------------------------|-------------|-------------|-------------|-------------|-------------|
| | | 1999/00 | 2000/01 | 2001/02 | 2002/03 | 2003/04 | 2003/04 | 2004/05 | 2005/06 | 2006/07 | 2007/08 | 2008/09 |
| Belfast | Nursery | 25.0 | 23.9 | 25.4 | 23.9 | 25.2 | 25.6 | 25.9 | 25.7 | 26.1 | 25.7 | 25.9 |
| | Primary ² | 19.8 | 19.4 | 19.5 | 18.5 | 18.1 | 18.8 | 19.0 | 19.6 | 20.4 | 20.1 | 20.0 |
| | Preparatory departments of grammar schools | 16.2 | 15.5 | 15.4 | 16.3 | 16.0 | 16.0 | 16.6 | 16.5 | 16.0 | 16.9 | 16.0 |
| | Secondary (excluding grammar) | 13.8 | 13.4 | 13.3 | 13.3 | 13.0 | 13.3 | 13.2 | 13.2 | 13.7 | 13.6 | 13.6 |
| | Grammar | 15.4 | 15.4 | 15.1 | 15.2 | 15.1 | 15.1 | 15.2 | 15.3 | 15.3 | 15.4 | 15.1 |
| | Special (excluding hospital schools) | 5.5 | 5.3 | 4.9 | 5.7 | 5.0 | 5.1 | 5.2 | 5.4 | 5.4 | 5.5 | 5.4 |
| | All grant-aided schools | 16.1 | 15.8 | 15.6 | 15.4 | 15.0 | 15.4 | 15.5 | 15.7 | 16.1 | 16.0 | 15.8 |
| Western | Nursery | 26.0 | 24.6 | 24.6 | 25.2 | 24.2 | 26.2 | 26.0 | 26.3 | 26.4 | 26.0 | 26.1 |
| | Primary ² | 20.7 | 20.6 | 20.1 | 19.5 | 19.8 | 20.3 | 20.4 | 20.6 | 21.0 | 20.7 | 20.3 |
| | Preparatory departments of grammar schools | 17.5 | 13.6 | 10.0 | 9.0 | - | - | - | - | - | - | - |
| | Secondary (excluding grammar) | 14.0 | 13.5 | 13.6 | 13.6 | 13.5 | 14.0 | 13.5 | 13.9 | 13.9 | 13.9 | 14.0 |
| | Grammar | 15.6 | 15.4 | 15.2 | 15.5 | 15.2 | 15.2 | 15.1 | 15.3 | 15.4 | 15.2 | 15.4 |
| | Special (excluding hospital schools) | 5.9 | 5.7 | 5.7 | 5.4 | 5.7 | 5.9 | 5.5 | 5.2 | 5.4 | 5.7 | 5.6 |
| | All grant-aided schools | 16.9 | 16.6 | 16.4 | 16.3 | 16.3 | 16.7 | 16.5 | 16.7 | 16.9 | 16.8 | 16.7 |
| North Eastern | Nursery | 23.9 | 24.2 | 23.0 | 23.3 | 23.8 | 24.9 | 25.1 | 24.7 | 25.4 | 23.1 | 23.5 |
| | Primary ² | 21.1 | 21.1 | 20.5 | 21.1 | 20.4 | 20.8 | 20.8 | 21.4 | 21.4 | 20.9 | 20.5 |
| | Preparatory departments of grammar schools | 16.3 | 17.6 | 18.5 | 16.0 | 17.5 | 17.5 | 15.7 | 15.6 | 15.5 | 14.9 | 15.6 |
| | Secondary (excluding grammar) | 14.1 | 14.2 | 13.9 | 13.8 | 13.8 | 14.1 | 14.0 | 14.0 | 14.2 | 13.8 | 13.9 |
| | Grammar | 15.7 | 15.4 | 15.5 | 15.5 | 15.3 | 15.3 | 15.2 | 15.3 | 15.4 | 15.2 | 15.0 |
| | Special (excluding hospital schools) | 6.5 | 6.4 | 6.6 | 6.4 | 6.6 | 6.7 | 6.7 | 6.5 | 6.7 | 6.3 | 6.4 |
| | All grant-aided schools | 17.3 | 17.2 | 16.9 | 17.0 | 16.7 | 17.0 | 17.0 | 17.2 | 17.3 | 16.9 | 16.7 |
| South Eastern | Nursery | 25.9 | 24.2 | 23.8 | 24.8 | 23.9 | 24.1 | 25.4 | 25.0 | 25.7 | 24.9 | 25.5 |
| | Primary ² | 20.8 | 20.3 | 19.8 | 19.7 | 19.2 | 19.8 | 19.6 | 20.1 | 20.7 | 20.8 | 20.7 |
| | Preparatory departments of grammar schools | 20.5 | 18.2 | 20.0 | 19.9 | 19.5 | 19.5 | 19.1 | 19.5 | 18.3 | 17.3 | 18.4 |
| | Secondary (excluding grammar) | 14.4 | 14.1 | 13.9 | 13.9 | 13.9 | 14.2 | 13.8 | 13.7 | 13.6 | 13.7 | 13.9 |
| | Grammar | 15.7 | 15.4 | 15.3 | 15.2 | 15.1 | 15.1 | 15.1 | 15.2 | 15.1 | 15.3 | 15.1 |
| | Special (excluding hospital schools) | 7.0 | 6.3 | 6.5 | 6.3 | 6.1 | 6.1 | 5.9 | 6.0 | 6.1 | 6.5 | 6.6 |
| | All grant-aided schools | 17.4 | 16.9 | 16.6 | 16.6 | 16.3 | 16.6 | 16.4 | 16.6 | 16.8 | 16.9 | 16.9 |
| Southern | Nursery | 26.2 | 26.2 | 24.4 | 23.7 | 24.3 | 25.2 | 26.0 | 26.0 | 25.6 | 25.5 | 26.0 |
| | Primary ² | 19.5 | 19.4 | 19.5 | 19.3 | 19.4 | 20.0 | 20.2 | 20.6 | 20.6 | 20.8 | 20.3 |
| | Preparatory departments of grammar schools | 17.6 | 18.3 | 14.6 | 14.1 | 10.1 | 10.1 | 13.0 | 16.0 | 14.2 | 13.6 | 17.5 |
| | Secondary (excluding grammar) | 14.3 | 14.2 | 14.4 | 14.2 | 14.5 | 14.8 | 14.4 | 14.6 | 14.5 | 14.3 | 14.4 |
| | Grammar | 15.6 | 15.4 | 15.2 | 15.2 | 15.5 | 15.5 | 15.2 | 15.2 | 15.1 | 15.3 | 15.2 |
| | Special (excluding hospital schools) | 5.9 | 5.7 | 6.3 | 6.3 | 6.3 | 6.4 | 6.3 | 6.3 | 6.1 | 6.5 | 6.2 |
| | All grant-aided schools | 16.9 | 16.8 | 16.8 | 16.6 | 16.8 | 17.2 | 17.1 | 17.3 | 17.3 | 17.3 | 17.1 |
| All grant-aided schools | Nursery | 25.3 | 24.4 | 24.4 | 24.1 | 24.4 | 25.2 | 25.7 | 25.5 | 25.9 | 25.1 | 25.4 |
| | Primary ² | 20.4 | 20.2 | 19.9 | 19.7 | 19.4 | 20.0 | 20.0 | 20.5 | 20.8 | 20.7 | 20.4 |
| | Preparatory departments of grammar schools | 17.5 | 16.6 | 16.9 | 17.2 | 17.0 | 17.0 | 17.3 | 17.5 | 16.8 | 16.9 | 16.9 |
| | Secondary (excluding grammar) | 14.1 | 13.9 | 13.8 | 13.8 | 13.8 | 14.1 | 13.8 | 13.9 | 14.0 | 13.9 | 14.0 |
| | Grammar | 15.6 | 15.4 | 15.3 | 15.3 | 15.2 | 15.2 | 15.2 | 15.3 | 15.3 | 15.3 | 15.1 |
| | Special (excluding hospital schools) | 6.2 | 5.9 | 5.9 | 6.0 | 5.8 | 5.9 | 5.8 | 5.8 | 5.9 | 6.0 | 6.0 |
| | Grand total | 16.9 | 16.7 | 16.5 | 16.4 | 16.3 | 16.6 | 16.5 | 16.7 | 16.9 | 16.8 | 16.7 |

¹ method of data collection changed in 2003/04: see Notes for Editors² includes pupils and teachers in nursery classes

* indicates no schools in this category

TABLE 3. PUPIL: TEACHER RATIOS BY EDUCATION AND LIBRARY BOARD, SCHOOL TYPE AND MANAGEMENT TYPE: 2008/09

| School type | Management type | Belfast | Western | North Eastern | South Eastern | Southern | Total |
|---------------------------------------------|------------------------------------|-------------|-------------|---------------|---------------|-------------|-------------|
| Nursery | Controlled | 25.8 | 26.1 | 23.3 | 25.3 | 26.1 | 25.2 |
| | Catholic Maintained | 26.0 | - | 25.9 | 25.8 | 25.9 | 25.9 |
| | All grant-aided nursery | 25.9 | 26.1 | 23.5 | 25.5 | 26.0 | 25.4 |
| Primary ¹ | Controlled | 19.8 | 20.3 | 20.6 | 20.8 | 20.1 | 20.4 |
| | Controlled Integrated | 20.8 | 10.3 | 17.1 | 20.4 | 19.4 | 19.2 |
| | Catholic Maintained | 20.5 | 20.5 | 20.6 | 20.6 | 20.4 | 20.5 |
| | Grant Maintained Integrated | 21.4 | 18.6 | 21.1 | 20.9 | 21.4 | 20.6 |
| | Other Maintained | 16.1 | 17.0 | 14.2 | 14.0 | 18.9 | 16.3 |
| | All grant-aided primary | 20.0 | 20.3 | 20.5 | 20.7 | 20.3 | 20.4 |
| Preparatory departments of grammar schools | Controlled | - | - | - | 17.8 | - | 17.8 |
| | Voluntary | 16.0 | - | 15.6 | 18.7 | 17.5 | 16.7 |
| | All grant-aided preparatory | 16.0 | - | 15.6 | 18.4 | 17.5 | 16.9 |
| Secondary (excluding grammar) | Controlled | 13.7 | 13.8 | 14.0 | 14.2 | 14.3 | 14.1 |
| | Controlled Integrated | - | - | 12.5 | 13.4 | 13.5 | 13.3 |
| | Catholic Maintained | 13.7 | 14.1 | 14.2 | 13.6 | 14.6 | 14.1 |
| | Grant Maintained Integrated | 14.2 | 14.0 | 13.1 | 13.9 | 13.2 | 13.7 |
| | Other Maintained | 11.3 | - | - | - | - | 11.3 |
| | All grant-aided secondary | 13.6 | 14.0 | 13.9 | 13.9 | 14.4 | 14.0 |
| Grammar | Controlled | 15.0 | 15.8 | 15.0 | 15.8 | 15.2 | 15.3 |
| | Voluntary | 15.1 | 15.3 | 15.1 | 14.8 | 15.2 | 15.1 |
| | All grant-aided grammar | 15.1 | 15.4 | 15.0 | 15.1 | 15.2 | 15.1 |
| All grant-aided post-primary schools | | 14.4 | 14.5 | 14.4 | 14.4 | 14.6 | 14.5 |
| Special (excluding hospital schools) | Controlled | 5.5 | 5.6 | 6.7 | 6.6 | 6.2 | 6.1 |
| | Catholic Maintained | 5.1 | - | - | - | - | 5.1 |
| | Other Maintained | - | - | 3.4 | - | - | 3.4 |
| | All grant-aided special | 5.4 | 5.6 | 6.4 | 6.6 | 6.2 | 6.0 |
| All grant-aided schools | Controlled | 15.4 | 16.1 | 17.0 | 17.2 | 16.8 | 16.7 |
| | Controlled Integrated | 20.8 | 10.3 | 15.3 | 16.0 | 14.4 | 15.9 |
| | Catholic Maintained | 16.8 | 17.7 | 17.8 | 18.0 | 18.0 | 17.7 |
| | Grant Maintained Integrated | 15.7 | 15.4 | 15.2 | 15.5 | 16.7 | 15.6 |
| | Other Maintained | 14.1 | 17.0 | 9.1 | 14.0 | 18.9 | 14.2 |
| | Voluntary | 15.2 | 15.3 | 15.1 | 15.1 | 15.2 | 15.2 |
| | Grand total | 15.8 | 16.7 | 16.7 | 16.9 | 17.1 | 16.7 |

¹ includes teachers in nursery classes
 - indicates no schools in this category