

26th May 2011

Theme: Children Education and Skills

STATISTICAL PRESS RELEASE

Qualifications and Destinations of Northern Ireland School Leavers 2009/10

This statistical release presents an analysis of GCSE and A Level examination performance and destinations for pupils leaving post-primary schools in Northern Ireland in 2009/10. The information can be analysed by a number of key pupil and school characteristics, for example by religion of pupil, school type or gender.

The pupil level data collected throughout this process is used by policy branches within DE and by other users across the education service, most notably by the Education and Training Inspectorate and the Education and Library Boards (ELBs). The data are also used to respond to Assembly questions and are used in the Department's accountability and performance management process. The primary reason for this data collection exercise is to create a statistical base to inform a wide range of policy areas aimed at raising standards and tackling educational underachievement. The data are also used in the development, implementation and monitoring of policies, in particular the Literacy and Numeracy strategies, school improvement programmes and relevant Departmental Public Service Agreements (PSAs).

Public Service Agreements

Building a Better Future - The Programme for Government (PfG) 2008 - 2011 outlines the Executive's strategic priorities, key plans and targets for the three years from 1 April 2008 – 31 March 2011. To ensure a focus across government on delivery, the Programme for Government sets out the Executive's key goals and commitments and the associated departmental goals and targets. DE is the lead Department on PSAs 10 and 19 and data from the school leavers survey are used to monitor the progress against a number of the Department's performance management targets.

PSA 10: Helping our children and young people to achieve through education.

Aim: Encourage all our children to realise their potential by improving access to formal and non formal education and provision tailored to the needs of disadvantaged children and young people.

Indicator 2. By 2011 increase to 30% the percentage of students , with entitlement to Free School Meals, gaining a Level 2 qualification including English and maths, by the time they leave school.

Position: In 2009/10 the percentage of school leavers entitled to free school meals achieving 5 GCSEs A*-C including English and maths was 31.3%.

PSA 19: Raising standards in our schools.

Aim: Educate and develop our young people to the highest possible standards to deliver improved outcomes for all young people, including measurable reductions in the gap in educational outcomes between highest and lowest attainers.

Indicator 1. By 2011, 68% of students gaining a Level 2 qualification by the time they leave school.

Position: In 2009/10 the percentage of school leavers achieving 5 GCSEs A*-C was 71.9%.

Indicator 4. By 2011 55% of students gaining a Level 2 qualification, including GCSEs A*-C in English and maths by the time they leave school.

Position: In 2009/10 the percentage of school leavers achieving 5 GCSEs A*-C including English and maths was 59.0%.

Indicator 5. By 2011 30% of students with entitlement to Free School Meals gaining 5+GCSEs A*-C including English and maths by the time they leave school.

Position: In 2009/10 the percentage of school leavers entitled to free school meals achieving 5 GCSEs A*-C including English and maths was 31.3%.

Indicator 6. By 2011 90% of students gaining GCSE A*-G in English and maths by the time they leave school.

Position: In 2009/10 the percentage of school leavers achieving GCSE A*-G in English and maths was 89.9%.

Recent Trends

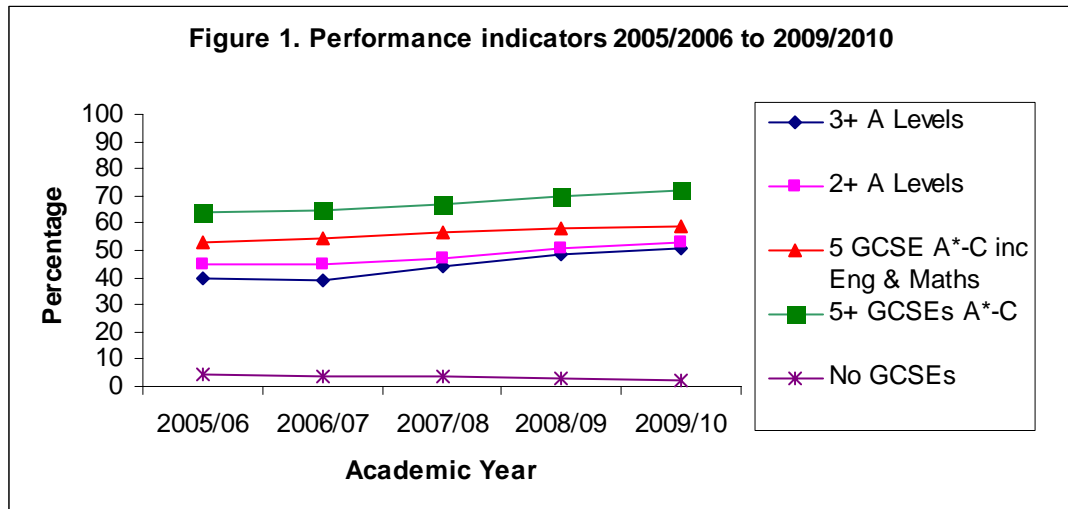
There has been a change in the stage at which pupils are leaving school, with greater proportions of school pupils staying on at school and entering Year 13. In 2005/06 44.7% of the Year 12 cohort left school but by 2009/10 this had dropped to 34.3%. Both grammar and non grammar schools have seen a decline in the proportions leaving school at the end of Year 12. When only non grammar schools are considered 50.3% of Year 12 pupils left school in 2009/10 compared with 62.5% of the Year 12 cohort in 2005/06. Over the five year period in grammar schools the proportion of Year 12's not entering Year 13 has decreased from 14.1% in 2005/06 to 8.9% in 2009/10.

For further information on participation rates please access the link below:
http://www.deni.gov.uk/participation_rates_release_for_0910.doc

Key Points

As highlighted in the PSA's some of the key performance indicators used by the Department relate to the attainment of school leavers at GCSE and A Level.

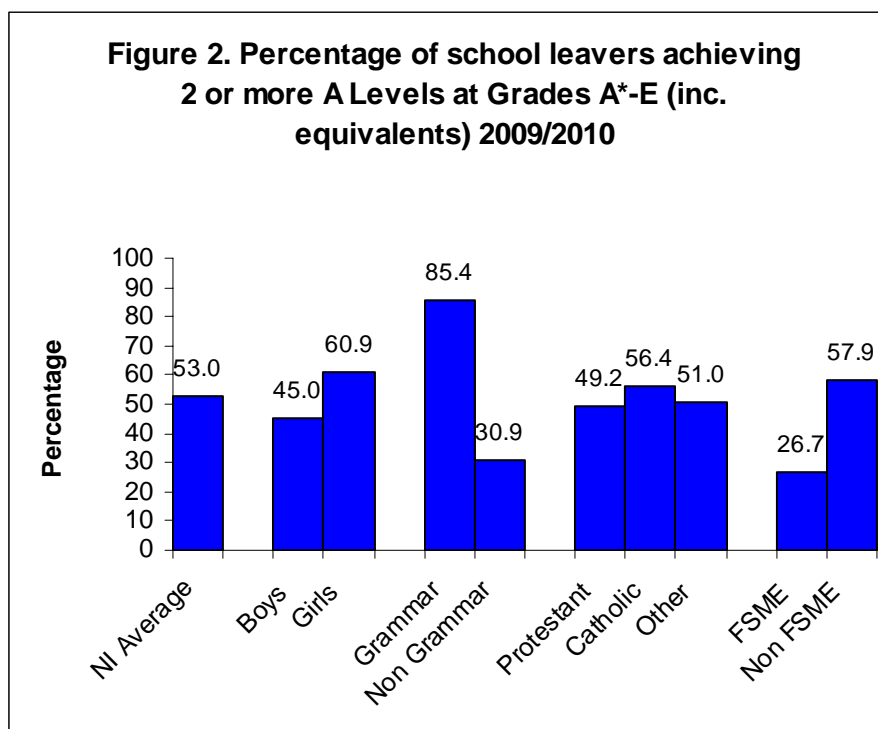
- The proportion of school leavers achieving two or more A levels or equivalent was 53.0% in 2009/10, an increase of 8.3 percentage points over the last five years from 44.7% in 2005/06 (Table1).
- The proportion of school leavers achieving at least five GCSEs at grades A* - C or equivalent has increased by 7.7 percentage points over the last five years from 64.2% in 2005/06 to 71.9% in 2009/10 (Table 1).
- Over the last five years the proportion of pupils leaving school with no GCSEs has decreased by 2.4 percentage points from 4.5% in 2005/06 to 2.1% in 2009/10 (Table 1).



- The proportion of school leavers continuing on to Institutions of Higher Education has increased by 4.8 percentage points from 37.4% in 2005/06 to 42.2% in 2009/10. The proportion continuing on to Institutions of Further Education increased by 4.9 percentage points from 28.2% in 2005/06 to 33.1% in 2009/10 (Table 13).
- The proportion of pupils recorded by their school as being unemployed after leaving school increased between 2005/06 and 2009/10 from 3.3% to 3.6% (Table 13).

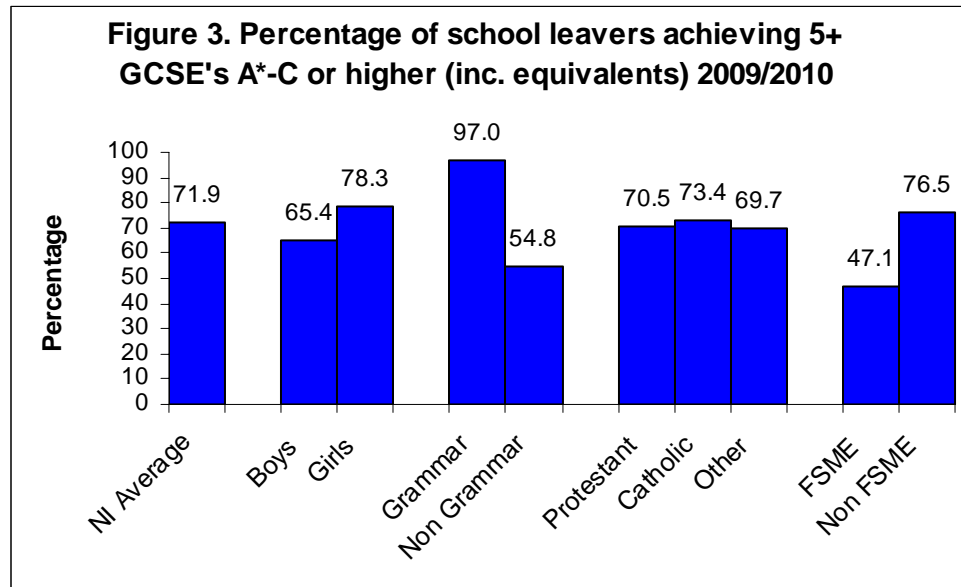
Qualifications

A Levels

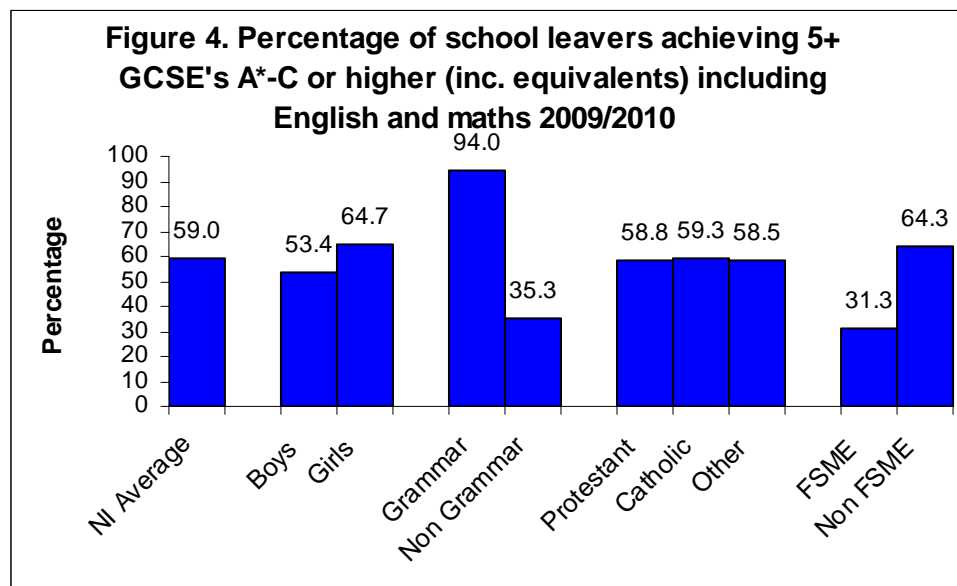


- Girls continue to outperform boys in terms of qualifications achieved. By the time they leave school 60.9% of girls achieved at least two A levels or equivalent compared to 45.0% of boys, and 58.7% of girls achieved three or more A levels or equivalent in 2009/10 compared to 42.9% of boys (Table 1, Table 13 & Table 14).
- The proportion of grammar school leavers achieving at least two A levels or equivalent has increased from 79.7% in 2005/06 to 85.4% in 2009/10. 89.7% of grammar school girls left school with two or more A levels or equivalent compared to 80.8% of grammar school boys. The corresponding proportions achieving at least two A levels or equivalent for non grammar schools were 39.9% for girls, 22.3% for boys and 30.9% overall, an increase of 8.1 percentage points from 22.8% in 2005/06 (Table 1).
- When religion of pupil is considered, 56.4% of Catholic school leavers achieved two or more A levels compared to 49.2% of Protestant school leavers (Table 3).
- The proportion of pupils achieving at least two A levels or equivalent was higher for those school leavers who were not entitled to free school meals, 57.9% compared with 26.7% of school leavers entitled to free school meals (Table 5).

GCSEs



- As in previous years the proportion of girls leaving school with at least five GCSEs or equivalent at grades A* - C remains higher than the proportion of boys; 78.3% of girls leaving school in 2009/10 achieved at least five GCSEs at grades A* - C or equivalent compared to 65.4% of boys (Table 1, Table 13 & Table 14).
- The proportion of pupils leaving grammar schools who achieved at least five GCSEs at grades A* - C or equivalent has increased from 96.3% in 2005/06 to 97.0% in 2009/10. The corresponding proportions for non grammar schools were 44.1% and 54.8%, a 10.7 percentage point increase (Table 1).
- More boys (303) leave school with no GCSEs or equivalent than girls (173), this represents 2.7% of boys and 1.5% of girls (Table 1).
- When free school meal entitlement is considered 4.4% of those entitled to free school meals leave without any GCSEs compared to 1.7% of school leavers who are not entitled to free school meals (Table 5).

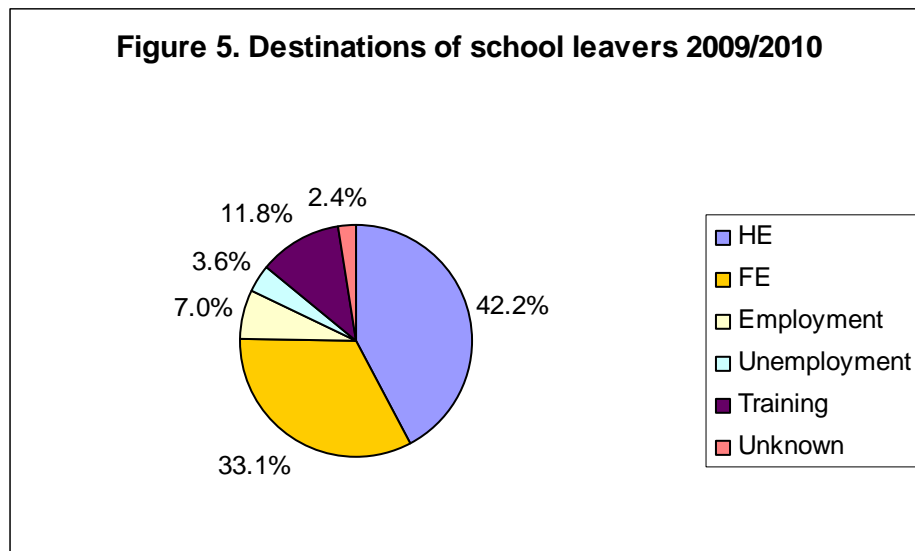


A key aspect of school improvement policy is to drive up literacy and numeracy standards in schools. The Department is therefore committed to ensuring that more children achieve a good standard of literacy and numeracy skills in order to better equip them for employability and/or further study.

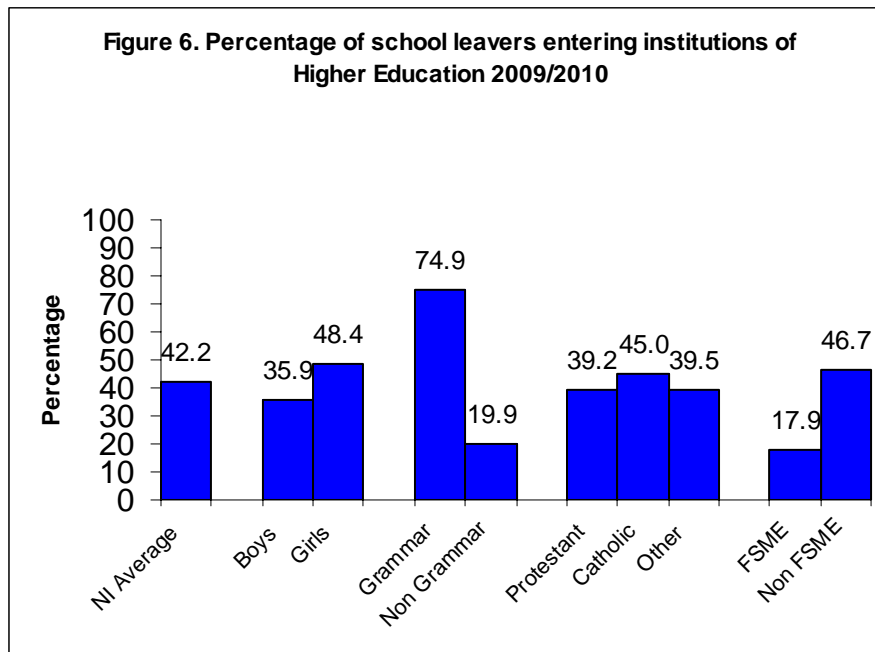
- Overall 59.0% of school leavers achieved at least five GCSEs at grades A* - C or equivalent including English and maths, up from 52.6% in 2005/06.
- 64.7% of girls achieve at least five GCSEs at grades A* - C or equivalent including English and maths compared with 53.4% of boys, a difference of 11.3 percentage points (Table 9).
- Looking at the difference between at least five GCSEs at grades A* - C or equivalent including English and maths and at least five GCSEs at grades A* - C or equivalent, 59.3% of Catholic school leavers left with at least five GCSEs at grades A* - C or equivalent including English and maths, and 73.4% left with at least five GCSEs at grades A* - C or equivalent a difference of 14.1 percentage points. The corresponding proportions for Protestant school leavers were 58.8% and 70.5% respectively, a difference of 11.7 percentage points (Table 3 & Table 9).
- When religion of pupil is considered 20.3% (101) of Protestant boys entitled to free school meals achieve at least five GCSEs at grades A* - C or equivalent including English and maths compared with 28.2% (331) of Catholic boys entitled to free school meals (Table 8).

- Geographically the data can be analysed in terms of the school leaver's place of residence and the location of their school. When education and library board (ELB) of school is considered, 65.3% of Belfast school leavers achieved at least five GCSEs at grades A* - C or equivalent including English and maths compared with 52.1% of school leavers resident in the Belfast Education and Library Board area. In contrast, 55.1% of school leavers attending schools in the South Eastern Education and Library Board achieved at least five GCSEs at grades A* - C or equivalent including English and maths compared with 63.2% of schools resident in the South Eastern Education and Library Board. The remaining three Board areas only displayed minor differences, less than 3 percentage points in the NEELB and less than 1 percentage point in the WELB and SELB Board areas. (Table 10 & Table 11).

Destinations



- In total 42.2% of school leavers entered Higher Education Institutions (HEI's). At 48.4% the proportion of girls continuing on to HEI's is higher than for boys (35.9%) (Table 15).
- At 16.9% the proportion of boys entering Training is much greater than for girls at 6.7% (Table 15).



- When religion of pupil is considered 39.2% of Protestant school leavers enter Institutions of Higher Education compared with 45.0% of Catholic school leavers (Table 16).
- School leavers not entitled to free school meals are more likely to continue their education with 78.1% entering institutions of Higher or Further Education compared to 60.0% of leavers who were entitled to free school meals (Table 18).
- Overall 51.8% of school leavers were recorded by their school as entering Further Education, Employment or Training. When school type is considered, 21.8% of grammar school leavers and 72.3% of non grammar school leavers were recorded as having these destinations (Table 15).
- 6% of all school leavers were recorded as unemployed or their destination was unknown. For pupils entitled to free school meals this figure was 9.8% compared with 5.3% for those pupils not entitled to free school meals (Table 15 & Table 18).

List of Tables

Table 1.	Qualifications of School Leavers by Gender and School Type
Table 2.	Highest Qualifications of School Leavers by Destinations
Table 3.	Qualifications of School Leavers by Gender and Religion of Pupil
Table 4.	Qualifications of School Leavers by Ethnic Origin
Table 5.	Qualifications of School Leavers by Gender and Free School Meal Entitlement
Table 6.	Qualifications of School Leavers by District Council of pupil residence
Table 7.	Percentage of School Leavers not entitled to free school meals achieving at least 5 GCSEs A*-C inc. English and maths by gender and religion of pupil
Table 8.	Percentage of School Leavers entitled to free school meals achieving at least 5 GCSEs A*-C inc. English and maths by gender and religion of pupil
Table 9.	Percentage of School Leavers achieving at least 5 GCSEs A*-C inc. English and maths by gender and religion of pupil
Table 10.	Qualifications of School Leavers by School Education and Library Board
Table 11.	Qualifications of School Leavers by Education and Library Board of pupil residence
Table 12.	Qualifications of School Leavers 2005/06 to 2009/10
Table 13.	Qualifications of Male School Leavers 2005/06 to 2009/10
Table 14.	Qualifications of Female School Leavers 2005/06 to 2009/10
Table 15.	Destination of School Leavers by School Type and Gender
Table 16.	Destination of School Leavers by Gender and Religion of Pupil
Table 17.	Destination of School Leavers by Ethnic Origin

Table 18. Destination of School Leavers by Free School Meal Entitlement and Gender

Appendix

Table A. Qualifications of School Leavers by Gender and School Type 2005/06

Table B. Destinations of School Leavers by School Type and Gender 2005/06

Notes to Readers

National Statistics

1. This is a National Statistics publication. National Statistics are produced to high professional standards set out in the Code of Practice for Official Statistics. They undergo regular assurance reviews to ensure that they meet customer needs. They are produced free from any political interference.
2. For general enquiries about National Statistics, contact the National Statistics Public Enquiry Service by
Telephone: 0845 601 3034

minicom: 01633 815.44

E-mail: info@statistics.gov.uk

Fax: 01633 652747

Letters: Customer Contact Centre, Office for National Statistics, Room 1.101, Cardiff Road, Newport, South Wales, NP10 8XG
3. You can also find National Statistics on the Internet: www.statistics.gov.uk

School Leavers' Survey

4. More detail about the collection of school leavers statistics may be found at: http://www.deni.gov.uk/school_leavers4.pdf Special analysis of the School Leavers' Survey can be produced on request. Data for Wales, England, Scotland and the Republic of Ireland may also be found at:

<http://wales.gov.uk/topics/educationandskills/?lang=en>
<http://www.education.gov.uk/rsgateway/DB/VOL/v000992/index.shtml>
<http://www.scotland.gov.uk/Publications/2010/03/22111037/0>
<http://www.scotland.gov.uk/Publications/2010/11/30144422/0>
http://www.education.ie/servlet/blobervlet/stat_school_leaver_survey_2007.pdf
5. Further information on examination equivalencies can be obtained from: <http://register.ofqual.gov.uk/Qualification>
6. The numbers relating to qualifications are cumulative totals of the level detailed and those above. For example 71.9% of school leavers achieved at least 5 GCSEs A*-C inc. equivalents. This proportion is calculated by adding those with a highest qualification of 3+ A Levels, 2 A Levels, 1 A Level & 5 GCSEs A*-C and dividing by the total number of school leavers.
7. Destinations are reported by the school leavers and recorded by the school.

Further Information

Requests for further information should be addressed to:-

Mr John Toogood
Statistics and Research Branch
Department of Education
Rathgael House
Balloo Road
Rathgill
Bangor
BT19 7PR

Telephone (028) 9127 9379
Fax (028) 9127 9594
E-mail john.toogood@deni.gov.uk

DE Statistical Press Releases can be accessed at the DE Internet site –
<http://www.deni.gov.uk> under the Statistics and Research section.

Press enquiries should be made to the Department's Press Office at the same address, telephone (028) 9127 9701/fax (028) 9127 9271.

TABLE 1

QUALIFICATIONS OF SCHOOL LEAVERS BY GENDER AND SCHOOL TYPE⁽¹⁾

	2009/2010					
	BOYS		GIRLS		TOTAL	
	Numbers	%	Numbers	%	Numbers	%
GRAMMAR						
3+ A Levels A*-E ⁽²⁾	3529	79.9	4295	89.3	7824	84.8
2+ A Levels A*-E ⁽²⁾	3569	80.8	4317	89.7	7886	85.4
At Least 5 GCSEs A*-C ⁽²⁾	4216	95.4	4735	98.4	8951	97.0
At Least 5 GCSEs A*-C ⁽²⁾ inc English and maths	4059	91.9	4619	96.0	8678	94.0
At Least 5 GCSEs A*-G ⁽²⁾	4393	99.4	4800	99.8	9193	99.6
No GCSEs ⁽³⁾	7	0.2	7	0.1	14	0.2
No Formal Qualifications ⁽⁴⁾	7	0.2	7	0.1	14	0.2
TOTAL GRAMMAR	4419	100.0	4812	100.0	9231	100.0
NON GRAMMAR						
3+ A Levels A*-E ⁽²⁾	1356	19.5	2421	36.5	3777	27.8
2+ A Levels A*-E ⁽²⁾	1556	22.3	2649	39.9	4205	30.9
At Least 5 GCSEs A*-C ⁽²⁾	3225	46.3	4228	63.8	7453	54.8
At Least 5 GCSEs A*-C ⁽²⁾ inc English and maths	2014	28.9	2781	41.9	4795	35.3
At Least 5 GCSEs A*-G ⁽²⁾	5942	85.3	6050	91.2	11992	88.2
No GCSEs ⁽³⁾	296	4.3	166	2.5	462	3.4
No Formal Qualifications ⁽⁴⁾	224	3.2	145	2.2	369	2.7
TOTAL NON GRAMMAR	6963	100.0	6632	100.0	13595	100.0
TOTAL						
3+ A Levels A*-E ⁽²⁾	4885	42.9	6716	58.7	11601	50.8
2+ A Levels A*-E ⁽²⁾	5125	45.0	6966	60.9	12091	53.0
At Least 5 GCSEs A*-C ⁽²⁾	7441	65.4	8963	78.3	16404	71.9
At Least 5 GCSEs A*-C ⁽²⁾ inc English and maths	6073	53.4	7400	64.7	13473	59.0
At Least 5 GCSEs A*-G ⁽²⁾	10335	90.8	10850	94.8	21185	92.8
No GCSEs ⁽³⁾	303	2.7	173	1.5	476	2.1
No Formal Qualifications ⁽⁴⁾	231	2.0	152	1.3	383	1.7
TOTAL LEAVERS	11382	100.0	11444	100.0	22826	100

NOTES

1. Excludes special and independent schools.
2. Includes equivalent qualifications.
3. Includes those who undertook no GCSE examinations or obtained no graded results but who obtained other qualifications.
4. Includes only those without qualifications of any kind.

Please see Notes to Readers point 6 for an explanation on how these figures are calculated.

TABLE 2

HIGHEST QUALIFICATION OF SCHOOL LEAVERS BY DESTINATIONS⁽¹⁾

	2009/2010												
	Institutions of Higher Education ⁽⁴⁾		Institutions of Further Education		Employment		Unemployment		Training ⁽⁵⁾		Unknown		Total
	Numbers	%	Numbers	%	Numbers	%	Numbers	%	Numbers	%	Numbers	%	
A levels													
3+A levels (or equivalent) ⁽²⁾	9489	81.8	1215	10.5	558	4.8	191	1.6	40	0.3	108	0.9	11601
2 (or equivalent) ⁽²⁾	126	25.7	210	42.9	94	19.2	29	5.9	18	3.7	13	2.7	490
1 ⁽²⁾	8	1.6	289	57.6	102	20.3	38	7.6	36	7.2	29	5.8	502
GCSEs													
5+ A*-C (or equivalent) ⁽²⁾		0.0	2761	72.4	292	7.7	126	3.3	503	13.2	129	3.4	3811
1-4 A*-C (or equivalent) ⁽²⁾		0.0	2468	55.9	354	8.0	172	3.9	1292	29.3	128	2.9	4414
Other grades (1+ D-G) ⁽²⁾		0.0	526	34.3	142	9.3	154	10.1	649	42.4	61	4.0	1532
No GCSEs ⁽³⁾		0.0	81	17.0	52	10.9	105	22.1	153	32.1	85	17.9	476
TOTAL LEAVERS	9623		7550		1594		815		2691		553		22826

NOTES

1. Excludes special and independent schools.
2. Includes equivalent qualifications.
3. Includes those who undertook no GCSE examinations or obtained no graded results. but who obtained other qualifications.
4. Includes universities and teacher training colleges.
5. Numbers entering training include those entering the Training for Success programme, operated by the Department for Employment and Learning. Training on Training for Success is delivered by a range of training providers, including Further Education Colleges. Training for Success trainees who receive training at Further Education Colleges are recorded as being in training and not in Further Education. This convention avoids double counting of Training for Success trainees.

TABLE 3

QUALIFICATIONS OF SCHOOL LEAVERS BY GENDER AND RELIGION OF PUPIL ⁽¹⁾

	2009/2010					
	BOYS		GIRLS		TOTAL	
	Numbers	%	Numbers	%	Numbers	%
PROTESTANT						
3+ A Levels A*-E ⁽²⁾	1839	39.7	2531	54.7	4370	47.2
2+ A Levels A*-E ⁽²⁾	1927	41.6	2621	56.7	4548	49.2
At Least 5 GCSEs A*-C ⁽²⁾	2989	64.6	3538	76.5	6527	70.5
At Least 5 GCSEs A*-C ⁽²⁾ inc English and maths	2430	52.5	3006	65.0	5436	58.8
At Least 5 GCSEs A*-G ⁽²⁾	4255	92.0	4393	95.0	8648	93.5
No GCSEs ⁽³⁾	108	2.3	62	1.3	170	1.8
No Formal Qualifications ⁽⁴⁾	73	1.6	52	1.1	125	1.4
TOTAL PROTESTANT	4627	100.0	4625	100.0	9252	100.0
CATHOLIC						
3+ A Levels A*-E ⁽²⁾	2558	45.7	3621	62.3	6179	54.1
2+ A Levels A*-E ⁽²⁾	2678	47.8	3761	64.7	6439	56.4
At Least 5 GCSEs A*-C ⁽²⁾	3725	66.5	4645	79.9	8370	73.4
At Least 5 GCSEs A*-C ⁽²⁾ inc English and maths	3036	54.2	3735	64.3	6771	59.3
At Least 5 GCSEs A*-G ⁽²⁾	5043	90.1	5525	95.0	10568	92.6
No GCSEs ⁽³⁾	152	2.7	85	1.5	237	2.1
No Formal Qualifications ⁽⁴⁾	125	2.2	77	1.3	202	1.8
TOTAL CATHOLIC	5598	100.0	5813	100.0	11411	100.0
OTHER⁽⁵⁾						
3+ A Levels A*-E ⁽²⁾	488	42.2	564	56.1	1052	48.6
2+ A Levels A*-E ⁽²⁾	520	44.9	584	58.1	1104	51.0
At Least 5 GCSEs A*-C ⁽²⁾	727	62.8	780	77.5	1507	69.7
At Least 5 GCSEs A*-C ⁽²⁾ inc English and maths	607	52.5	659	65.5	1266	58.5
At Least 5 GCSEs A*-G ⁽²⁾	1037	89.6	932	92.6	1969	91.0
No GCSEs ⁽³⁾	43	3.7	26	2.6	69	3.2
No Formal Qualifications ⁽⁴⁾	33	2.9	23	2.3	56	2.6
TOTAL OTHER	1157	100.0	1006	100.0	2163	100.0

NOTES

1. Excludes special and independent schools.
2. Includes equivalent qualifications.
3. Includes those who undertook no GCSE examinations or obtained no graded results but who obtained other qualifications.
4. Includes only those with no qualifications of any kind.
5. Other includes Other Christian, No religion and Non Christian.

Please see Notes to Readers point 6 for an explanation on how these figures are calculated.

TABLE 4

QUALIFICATIONS OF SCHOOL LEAVERS BY ETHNIC ORIGIN⁽¹⁾

	2009/2010	
	TOTAL	
	Numbers	%
WHITE		
3+ A Levels A*-E ⁽²⁾	11404	50.7
2+ A Levels A*-E ⁽²⁾	11883	52.9
At Least 5 GCSEs A*-C ⁽²⁾	16147	71.9
At Least 5 GCSEs A*-C ⁽²⁾ inc English and maths	13277	59.1
At Least 5 GCSEs A*-G ⁽²⁾	20866	92.9
No GCSEs ⁽³⁾	458	2.0
No Formal Qualifications ⁽⁴⁾	365	1.6
TOTAL WHITE	22472	100.0
MINORITY ETHNIC GROUPS⁽⁵⁾		
3+ A Levels A*-E ⁽²⁾	197	55.6
2+ A Levels A*-E ⁽²⁾	208	58.8
At Least 5 GCSEs A*-C ⁽²⁾	257	72.6
At Least 5 GCSEs A*-C ⁽²⁾ inc English and maths	196	55.4
At Least 5 GCSEs A*-G ⁽²⁾	319	90.1
No GCSEs ⁽³⁾	18	5.1
No Formal Qualifications ⁽⁴⁾	18	5.1
TOTAL MINORITY ETHNIC GROUPS	354	100.0

NOTES

1. Excludes special and independent schools.
2. Includes equivalent qualifications.
3. Includes those who undertook no GCSE examinations or obtained no graded results but who obtained other qualifications.
4. Includes only those with no qualifications of any kind.
5. 'Minority Ethnic Groups' includes Irish Travellers. 'White' do not include Irish Travellers.

Please see Notes to Readers point 6 for an explanation on how these figures are calculated.

TABLE 5

QUALIFICATIONS OF SCHOOL LEAVERS BY GENDER AND FREE SCHOOL MEAL ENTITLEMENT⁽¹⁾

	2009/2010					
	BOYS		GIRLS		TOTAL	
	Numbers	%	Numbers	%	Numbers	%
ENTITLED TO FSM						
3+ A Levels A*-E ⁽²⁾	321	18.0	567	31.0	888	24.5
2+ A Levels A*-E ⁽²⁾	353	19.8	613	33.5	966	26.7
At Least 5 GCSEs A*-C ⁽²⁾	677	37.9	1026	56.0	1703	47.1
At Least 5 GCSEs A*-C ⁽²⁾ inc English and maths	461	25.8	670	36.6	1131	31.3
At Least 5 GCSEs A*-G ⁽²⁾	1409	78.8	1595	87.1	3004	83.0
No GCSEs ⁽³⁾	94	5.3	64	3.5	158	4.4
No Formal Qualifications ⁽⁴⁾	67	3.7	51	2.8	118	3.3
TOTAL ENTITLED TO FSM	1787	100.0	1831	100.0	3618	100.0
NOT ENTITLED TO FSM						
3+ A Levels A*-E ⁽²⁾	4564	47.6	6149	64.0	10713	55.8
2+ A Levels A*-E ⁽²⁾	4772	49.7	6353	66.1	11125	57.9
At Least 5 GCSEs A*-C ⁽²⁾	6764	70.5	7937	82.6	14701	76.5
At Least 5 GCSEs A*-C ⁽²⁾ inc English and maths	5612	58.5	6730	70.0	12342	64.3
At Least 5 GCSEs A*-G ⁽²⁾	8926	93.0	9255	96.3	18181	94.7
No GCSEs ⁽³⁾	209	2.2	109	1.1	318	1.7
No Formal Qualifications ⁽⁴⁾	164	1.7	101	1.1	265	1.4
TOTAL NOT ENTITLED TO FSM	9595	100.0	9613	100.0	19208	100.0

NOTES

1. Excludes special and independent schools.
2. Includes equivalent qualifications.
3. Includes those who undertook no GCSE examinations or obtained no graded results but who obtained other qualifications.
4. Includes only those with no qualifications of any kind.

Please see Notes to Readers point 6 for an explanation on how these figures are calculated.

TABLE 6

QUALIFICATIONS OF SCHOOL LEAVERS BY DISTRICT COUNCIL OF PUPIL RESIDENCE 2009/10⁽¹⁾

District Council	2 or more A Levels Grades A*-E (inc equivalents) ⁽²⁾		At least 5 GCSEs Grades A*-C (inc equivalents) ⁽²⁾		No GCSEs ⁽³⁾		Total Leavers
	Number	%	Number	%	Number	%	Number
Antrim	325	47.4	503	73.4	11	1.6	685
Ards	410	46.2	592	66.7	21	2.4	888
Armagh	397	49.3	631	78.4	15	1.9	805
Ballymena	398	52.4	561	73.8	5	0.7	760
Ballymoney	152	42.8	257	72.4	9	2.5	355
Banbridge	264	47.7	388	70.2	10	1.8	553
Belfast	1569	50.2	2049	65.5	120	3.8	3128
Carrickfergus	266	51.3	346	66.7	7	1.3	519
Castlereagh	505	61.7	620	75.7	12	1.5	819
Coleraine	315	49.3	471	73.7	11	1.7	639
Cookstown	279	56.1	364	73.2	10	2.0	497
Craigavon	546	44.0	873	70.4	28	2.3	1240
Londonderry	896	57.1	1119	71.4	41	2.6	1568
Down	505	53.7	695	73.9	21	2.2	941
Dungannon	424	55.3	582	75.9	11	1.4	767
Fermanagh	464	58.9	610	77.4	14	1.8	788
Larne	213	52.5	279	68.7	11	2.7	406
Limavady	240	51.9	320	69.3	6	1.3	462
Lisburn	839	56.8	1086	73.6	32	2.2	1476
Magherafelt	360	59.6	465	77.0	7	1.2	604
Moyle	105	55.6	150	79.4	*	*	189
Newry & Mourne	761	55.5	1003	73.2	21	1.5	1370
Newtownabbey	504	51.3	703	71.6	14	1.4	982
North Down	505	61.1	637	77.1	11	1.3	826
Omagh	430	60.9	539	76.3	13	1.8	706
Strabane	303	53.5	384	67.8	*	*	566
Invalid/Missing/Unknown Postcodes	116	40.4	177	61.7	8	2.8	287
Total Leavers	12091		16404		476		22826

NOTES

1. Excludes special and independent schools.
2. Includes equivalent qualifications.
3. Includes those who undertook no GCSE examinations or obtained no graded results but who obtained other qualifications.

* denotes fewer than 5 pupils.

Please see Notes to Readers point 6 for an explanation on how these figures are calculated.

TABLE 7

PERCENTAGE OF SCHOOL LEAVERS ***NOT ENTITLED*** TO FREE SCHOOL MEALS ACHIEVING AT LEAST 5 GCSEs ⁽²⁾ A*-C INC. ENGLISH AND MATHS BY GENDER AND RELIGION OF PUPIL 2009/10⁽¹⁾

	BOYS		GIRLS		TOTAL	
	Numbers	%	Numbers	%	Numbers	%
PROTESTANT	2329	56.4	2871	69.7	5200	63.1
Total	4130		4117		8247	
CATHOLIC	2705	61.1	3235	70.1	5940	65.7
Total	4425		4613		9038	
OTHER ⁽³⁾	578	55.6	624	70.7	1202	62.5
Total	1040		883		1923	
ALL RELIGIONS	5612	58.5	6730	70.0	12342	64.3
Total	9595		9613		19208	

TABLE 8

PERCENTAGE OF SCHOOL LEAVERS ***ENTITLED*** TO FREE SCHOOL MEALS ACHIEVING AT LEAST 5 GCSEs ⁽²⁾ A*-C INC. ENGLISH AND MATHS BY GENDER AND RELIGION OF PUPIL 2009/10⁽¹⁾

	BOYS		GIRLS		TOTAL	
	Numbers	%	Numbers	%	Numbers	%
PROTESTANT	101	20.3	135	26.6	236	23.5
Total	497		508		1005	
CATHOLIC	331	28.2	500	41.7	831	35.0
Total	1173		1200		2373	
OTHER ⁽³⁾	29	24.8	35	28.5	64	26.7
Total	117		123		240	
ALL RELIGIONS	461	25.8	670	36.6	1131	31.3
Total	1787		1831		3618	

TABLE 9

PERCENTAGE OF SCHOOL LEAVERS ACHIEVING AT LEAST 5 GCSEs ⁽²⁾ A*-C INC. ENGLISH AND MATHS BY GENDER AND RELIGION OF PUPIL 2009/10⁽¹⁾

	BOYS		GIRLS		TOTAL	
	Numbers	%	Numbers	%	Numbers	%
PROTESTANT	2430	52.5	3006	65.0	5436	58.8
Total	4627		4625		9252	
CATHOLIC	3036	54.2	3735	64.3	6771	59.3
Total	5598		5813		11411	
OTHER ⁽³⁾	607	52.5	659	65.5	1266	58.5
Total	1157		1006		2163	
ALL RELIGIONS	6073	53.4	7400	64.7	13473	59.0
Total	11382		11444		22826	

NOTES

1. Excludes special and independent schools.
2. Includes equivalent applied qualifications.
3. Other includes Other Christian, No religion and Non Christian.

Please see Notes to Readers point 6 for an explanation on how these figures are calculated.

TABLE 10

QUALIFICATIONS OF SCHOOL LEAVERS BY SCHOOL EDUCATION AND LIBRARY BOARD ⁽¹⁾

2009/2010	ELB of school									
	Belfast		Western		North Eastern		South Eastern		Southern	
	No.	%	No.	%	No.	%	No.	%	No.	%
3+ A Levels A*-E ⁽²⁾	2692	59.5	2201	54.3	2356	46.8	1820	45.8	2532	48.3
2+ A Levels A*-E ⁽²⁾	2810	62.1	2291	56.5	2457	48.8	1913	48.1	2620	50.0
At Least 5 GCSEs A*-C ⁽²⁾	3464	76.6	2935	72.4	3528	70.1	2652	66.7	3825	73.0
At Least 5 GCSEs A*-C ⁽²⁾ inc English and maths	2953	65.3	2445	60.3	2788	55.4	2190	55.1	3097	59.1
At Least 5 GCSEs A*-G ⁽²⁾	4197	92.8	3768	92.9	4692	93.3	3660	92.1	4868	92.8
No GCSEs ⁽³⁾	112	2.5	78	1.9	81	1.6	108	2.7	97	1.9
No Formal Qualifications ⁽⁴⁾	93	2.1	61	1.5	64	1.3	99	2.5	66	1.3
TOTAL LEAVERS	4523	100.0	4054	100.0	5030	100.0	3976	100.0	5243	100.0

TABLE 11

QUALIFICATIONS OF SCHOOL LEAVERS BY EDUCATION AND LIBRARY BOARD OF PUPIL RESIDENCE ⁽¹⁾

2009/2010	ELB of pupil residence									
	Belfast		Western		North Eastern		South Eastern		Southern	
	No.	%	No.	%	No.	%	No.	%	No.	%
3+ A Levels A*-E ⁽²⁾	1470	47.0	2238	54.7	2540	49.4	2655	53.6	2584	49.4
2+ A Levels A*-E ⁽²⁾	1569	50.2	2333	57.0	2638	51.3	2764	55.8	2671	51.1
At Least 5 GCSEs A*-C ⁽²⁾	2049	65.5	2972	72.7	3735	72.7	3630	73.3	3841	73.4
At Least 5 GCSEs A*-C ⁽²⁾ inc English and maths	1631	52.1	2479	60.6	2987	58.1	3127	63.2	3125	59.7
At Least 5 GCSEs A*-G ⁽²⁾	2774	88.7	3809	93.1	4810	93.6	4672	94.4	4863	92.9
No GCSEs ⁽³⁾	120	3.8	78	1.9	78	1.5	97	2.0	95	1.8
No Formal Qualifications ⁽⁴⁾	98	3.1	60	1.5	61	1.2	92	1.9	66	1.3
TOTAL LEAVERS	3128	100.0	4090	100.0	5139	100.0	4950	100.0	5232	100.0

NOTES

1. Excludes special and independent schools.
2. Includes equivalent qualifications.
3. Includes those who undertook no GCSE examinations or obtained no graded results but who obtained other qualifications.
4. Includes only those without qualifications of any kind.

ELB of pupil residence is based on the residential postcode of each individual pupil.

Please see Notes to Readers point 6 for an explanation on how these figures are calculated.

TABLE 12**QUALIFICATIONS OF SCHOOL LEAVERS 2005/2006 TO 2009/2010⁽¹⁾**

Academic Year					
	2005/06	2006/07	2007/08	2008/09	2009/10
3+ A Levels A*-E ⁽²⁾	39.8	39.0	44.0	48.2	50.8
2+ A Levels A*-E ⁽²⁾	44.7	44.6	46.7	50.6	53.0
At Least 5 GCSEs A*-C ⁽²⁾	64.2	64.7	66.9	70.1	71.9
At Least 5 GCSEs A*-C ⁽²⁾ inc English and maths	52.6	54.2	56.3	58.4	59.0
At Least 5 GCSEs A*-G ⁽²⁾	87.5	88.7	89.7	91.3	92.8
No GCSEs ⁽³⁾	4.5	3.9	3.6	2.9	2.1
No Formal Qualifications ⁽⁴⁾	3.2	3.0	2.8	2.3	1.7
TOTAL LEAVERS	25528	24803	24091	23276	22826

TABLE 13**QUALIFICATIONS OF MALE SCHOOL LEAVERS 2005/2006 TO 2009/2010⁽¹⁾**

Academic Year					
	2005/06	2006/07	2007/08	2008/09	2009/10
3+ A Levels A*-E ⁽²⁾	32.6	32.1	35.7	40.7	42.9
2+ A Levels A*-E ⁽²⁾	36.6	36.6	37.9	42.8	45.0
At Least 5 GCSEs A*-C ⁽²⁾	57.5	58.2	60.0	64.4	65.4
At Least 5 GCSEs A*-C ⁽²⁾ inc English and maths	47.0	49.0	50.2	53.1	53.4
At Least 5 GCSEs A*-G ⁽²⁾	83.5	85.6	86.8	88.9	90.8
No GCSEs ⁽³⁾	6.1	5.3	4.8	3.6	2.7
No Formal Qualifications ⁽⁴⁾	4.3	3.9	3.5	2.7	2.0
TOTAL LEAVERS	13037	12592	12136	11605	11382

TABLE 14**QUALIFICATIONS OF FEMALE SCHOOL LEAVERS 2005/2006 TO 2009/2010⁽¹⁾**

Academic Year					
	2005/06	2006/07	2007/08	2008/09	2009/10
3+ A Levels A*-E ⁽²⁾	47.3	46.2	52.4	55.6	58.7
2+ A Levels A*-E ⁽²⁾	53.2	52.8	55.6	58.4	60.9
At Least 5 GCSEs A*-C ⁽²⁾	71.2	71.5	73.8	75.9	78.3
At Least 5 GCSEs A*-C ⁽²⁾ inc English and maths	58.4	59.6	62.6	63.7	64.7
At Least 5 GCSEs A*-G ⁽²⁾	91.8	91.9	92.6	93.6	94.8
No GCSEs ⁽³⁾	2.8	2.5	2.5	2.2	1.5
No Formal Qualifications ⁽⁴⁾	2.1	2.0	2.1	1.9	1.3
TOTAL LEAVERS	12491	12211	11955	11671	11444

NOTES

1. Excludes special and independent schools.
2. Includes equivalent qualifications.
3. Includes those who undertook no GCSE examinations or obtained no graded results but who obtained other qualifications.
4. Includes only those without qualifications of any kind.

Please see Notes to Readers point 6 for an explanation on how these figures are calculated.

TABLE 15

DESTINATIONS OF SCHOOL LEAVERS BY SCHOOL TYPE AND GENDER ⁽¹⁾⁽²⁾

	2009/2010					
	BOYS		GIRLS		TOTAL	
	Numbers	%	Numbers	%	Numbers	%
GRAMMAR						
Institutions of Higher Education ⁽³⁾	3051	69.0	3867	80.4	6918	74.9
Institutions of Further Education	894	20.2	645	13.4	1539	16.7
Employment	222	5.0	126	2.6	348	3.8
Unemployment	51	1.2	70	1.5	121	1.3
Training ⁽⁴⁾	105	2.4	20	0.4	125	1.4
Destinations Unknown	96	2.2	84	1.7	180	1.9
TOTAL GRAMMAR	4419	100.0	4812	100.0	9231	100.0
NON GRAMMAR						
Institutions of Higher Education ⁽³⁾	1032	14.8	1673	25.2	2705	19.9
Institutions of Further Education	2868	41.2	3143	47.4	6011	44.2
Employment	694	10.0	552	8.3	1246	9.2
Unemployment	362	5.2	332	5.0	694	5.1
Training ⁽⁴⁾	1824	26.2	742	11.2	2566	18.9
Destinations Unknown	183	2.6	190	2.9	373	2.7
TOTAL NON GRAMMAR	6963	100.0	6632	100.0	13595	100.0
TOTAL						
Institutions of Higher Education ⁽³⁾	4083	35.9	5540	48.4	9623	42.2
Institutions of Further Education	3762	33.1	3788	33.1	7550	33.1
Employment	916	8.0	678	5.9	1594	7.0
Unemployment	413	3.6	402	3.5	815	3.6
Training ⁽⁴⁾	1929	16.9	762	6.7	2691	11.8
Destinations Unknown	279	2.5	274	2.4	553	2.4
TOTAL LEAVERS	11382	100.0	11444	100.0	22826	100.0

NOTES

1. Excludes special and independent schools.
2. Destination is defined by Institution. Institutions may provide courses at both Further and Higher Education levels.
3. Includes universities and teacher training colleges.
4. Numbers entering training include those entering the Training for Success programme, operated by the Department for Employment and Learning. Training on Training for Success is delivered by a range of training providers, including Further Education Colleges. Training for Success trainees who receive training at Further Education Colleges are recorded as being in training and not in Further Education. This convention avoids double counting of Training for Success trainees.

TABLE 16

DESTINATION OF SCHOOL LEAVERS BY GENDER AND RELIGION OF PUPIL⁽¹⁾⁽²⁾

	2009/2010					
	BOYS		GIRLS		TOTAL	
	Numbers	%	Numbers	%	Numbers	%
PROTESTANT						
Institutions of Higher Education ⁽⁴⁾	1521	32.9	2110	45.6	3631	39.2
Institutions of Further Education	1688	36.5	1661	35.9	3349	36.2
Employment	391	8.5	244	5.3	635	6.9
Unemployment	178	3.8	174	3.8	352	3.8
Training ⁽⁵⁾	770	16.6	329	7.1	1099	11.9
Destinations Unknown	79	1.7	107	2.3	186	2.0
TOTAL PROTESTANT	4627	100.0	4625	100.0	9252	100.0
CATHOLIC						
Institutions of Higher Education ⁽⁴⁾	2172	38.8	2965	51.0	5137	45.0
Institutions of Further Education	1650	29.5	1761	30.3	3411	29.9
Employment	422	7.5	377	6.5	799	7.0
Unemployment	184	3.3	200	3.4	384	3.4
Training ⁽⁵⁾	999	17.8	368	6.3	1367	12.0
Destinations Unknown	171	3.1	142	2.4	313	2.7
TOTAL CATHOLIC	5598	100.0	5813	100.0	11411	100.0
Other⁽³⁾						
Institutions of Higher Education ⁽⁴⁾	390	33.7	465	46.2	855	39.5
Institutions of Further Education	424	36.6	366	36.4	790	36.5
Employment	103	8.9	57	5.7	160	7.4
Unemployment	51	4.4	28	2.8	79	3.7
Training ⁽⁵⁾	160	13.8	65	6.5	225	10.4
Destinations Unknown	29	2.5	25	2.5	54	2.5
TOTAL OTHER	1157	100.0	1006	100.0	2163	100.0

NOTES

1. Excludes special and independent schools.
2. Destination is defined by Institution. Institution may provide courses at both Further and Higher Education Levels.
3. Other includes Other Christian, No religion and Non Christian.
4. Includes universities and teacher training colleges.
5. Numbers entering training include those entering the Training for Success programme, operated by the Department for Employment and Learning. Training on Training for Success is delivered by a range of training providers, including Further Education Colleges. Training for Success trainees who receive training at Further Education Colleges are recorded as being in training and not in Further Education. This convention avoids double counting of Training for Success trainee

TABLE 17

DESTINATION OF SCHOOL LEAVERS BY ETHNIC ORIGIN⁽¹⁾⁽²⁾

	2009/2010	
	Total	
	Numbers	%
WHITE⁽³⁾		
Institutions of Higher Education ⁽⁴⁾	9452	42.1
Institutions of Further Education	7442	33.1
Employment	1571	7.0
Unemployment	801	3.6
Training ⁽⁵⁾	2661	11.8
Destinations Unknown	545	2.4
TOTAL WHITE	22472	100.0
MINORITY ETHNIC GROUPS⁽³⁾		
Institutions of Higher Education ⁽⁴⁾	171	48.3
Institutions of Further Education	108	30.5
Employment	23	6.5
Unemployment	14	4.0
Training ⁽⁵⁾	30	8.5
Destinations Unknown	8	2.3
TOTAL MINORITY ETHNIC GROUPS	354	100.0

NOTES

1. Excludes special and independent schools.
2. Destination is defined by Institution. Institution may provide courses at both Further and Higher Education Levels
3. 'Minority Ethnic Groups' includes Irish Travellers. 'White' do not include Irish Travellers.
4. Includes universities and teacher training colleges.
5. Numbers entering training include those entering the Training for Success programme, operated by the Department for Employment and Learning. Training on Training for Success is delivered by a range of training providers, including Further Education Colleges. Training for Success trainees who receive training at Further Education Colleges are recorded as being in training and not in Further Education. This convention avoids double counting of Training for Success trainees.

TABLE 18

DESTINATION OF SCHOOL LEAVERS BY FREE SCHOOL MEAL ENTITLEMENT AND GENDER OF PUPIL ⁽¹⁾⁽²⁾

	2009/2010					
	BOYS		GIRLS		TOTAL	
	Numbers	%	Numbers	%	Numbers	%
ENTITLED TO FSM						
Institutions of Higher Education ⁽³⁾	249	13.9	400	21.8	649	17.9
Institutions of Further Education	667	37.3	856	46.8	1523	42.1
Employment	135	7.6	139	7.6	274	7.6
Unemployment	132	7.4	108	5.9	240	6.6
Training ⁽⁴⁾	551	30.8	267	14.6	818	22.6
Destinations Unknown	53	3.0	61	3.3	114	3.2
TOTAL ENTITLED TO FSM	1787	100.0	1831	100.0	3618	100.0
NOT ENTITLED TO FSM						
Institutions of Higher Education ⁽³⁾	3834	40.0	5140	53.5	8974	46.7
Institutions of Further Education	3095	32.3	2932	30.5	6027	31.4
Employment	781	8.1	539	5.6	1320	6.9
Unemployment	281	2.9	294	3.1	575	3.0
Training ⁽⁴⁾	1378	14.4	495	5.1	1873	9.8
Destinations Unknown	226	2.4	213	2.2	439	2.3
TOTAL NOT ENTITLED TO FSM	9595	100.0	9613	100.0	19208	100.0

NOTES

1. Excludes special and independent schools.
2. Destination is defined by Institution. Institution may provide courses at both Further and Higher Education Levels
3. Includes universities and teacher training colleges.
4. Numbers entering training include those entering the Training for Success programme, operated by the Department for Employment and Learning. Training on Training for Success is delivered by a range of training providers, including Further Education Colleges. Training for Success trainees who receive training at Further Education Colleges are recorded as being in training and not in Further Education. This convention avoids double counting of Training for Success trainees.

APPENDIX A

QUALIFICATIONS OF SCHOOL LEAVERS BY GENDER AND SCHOOL TYPE⁽¹⁾

	2005/2006					
	BOYS		GIRLS		TOTAL	
	Numbers	%	Numbers	%	Numbers	%
GRAMMAR						
3+ A Levels A*-E ⁽²⁾	3296	68.2	4136	82.5	7432	75.5
2+ A Levels A*-E ⁽²⁾	3539	73.2	4306	85.8	7845	79.7
At Least 5 GCSEs A*-C ⁽²⁾	4554	94.2	4926	98.2	9480	96.3
At Least 5 GCSEs A*-C ⁽²⁾ inc English and maths	4211	87.1	4599	91.7	8810	89.5
At Least 5 GCSEs A*-G ⁽²⁾	4776	98.8	4993	99.5	9769	99.2
No GCSEs ⁽³⁾	33	0.7	15	0.3	48	0.5
No Formal Qualifications ⁽⁴⁾	33	0.7	15	0.3	48	0.5
TOTAL GRAMMAR	4833	100.0	5016	100.0	9849	100.0
NON GRAMMAR						
3+ A Levels A*-E ⁽²⁾	953	11.6	1774	23.7	2727	17.4
2+ A Levels A*-E ⁽²⁾	1231	15.0	2337	31.3	3568	22.8
At Least 5 GCSEs A*-C ⁽²⁾	2941	35.8	3973	53.2	6914	44.1
At Least 5 GCSEs A*-C ⁽²⁾ inc English and maths	1914	23.3	2692	36.0	4606	29.4
At Least 5 GCSEs A*-G ⁽²⁾	6104	74.4	6469	86.5	12573	80.2
No GCSEs ⁽³⁾	767	9.3	337	4.5	1104	7.0
No Formal Qualifications ⁽⁴⁾	523	6.4	246	3.3	769	4.9
TOTAL NON GRAMMAR	8204	100.0	7475	100.0	15679	100.0
TOTAL						
3+ A Levels A*-E ⁽²⁾	4249	32.6	5910	47.3	10159	39.8
2+ A Levels A*-E ⁽²⁾	4770	36.6	6643	53.2	11413	44.7
At Least 5 GCSEs A*-C ⁽²⁾	7495	57.5	8899	71.2	16394	64.2
At Least 5 GCSEs A*-C ⁽²⁾ inc English and maths	6125	47.0	7291	58.4	13416	52.6
At Least 5 GCSEs A*-G ⁽²⁾	10880	83.5	11462	91.8	22342	87.5
No GCSEs ⁽³⁾	800	6.1	352	2.8	1152	4.5
No Formal Qualifications ⁽⁴⁾	556	4.3	261	2.1	817	3.2
TOTAL LEAVERS	13037	100.0	12491	100.0	25528	100.0

NOTES

1. Excludes special and independent schools.
2. Includes equivalent qualifications.
3. Includes those who undertook no GCSE examinations or obtained no graded results but who obtained other qualifications.
4. Includes only those without qualifications of any kind.

Please see Notes to Readers point 6 for an explanation on how these figures are calculated.

APPENDIX B

DESTINATIONS OF SCHOOL LEAVERS BY SCHOOL TYPE AND GENDER ⁽¹⁾⁽²⁾

	2005/2006					
	BOYS		GIRLS		TOTAL	
	Numbers	%	Numbers	%	Numbers	%
GRAMMAR						
Institutions of Higher Education ⁽³⁾	3126	64.7	3867	77.1	6993	71.0
Institutions of Further Education	990	20.5	808	16.1	1798	18.3
Employment	288	6.0	183	3.6	471	4.8
Unemployment	44	0.9	51	1.0	95	1.0
Training ⁽⁴⁾	296	6.1	47	0.9	343	3.5
Destinations Unknown	89	1.8	60	1.2	149	1.5
TOTAL GRAMMAR	4833	100.0	5016	100.0	9849	100.0
NON GRAMMAR						
Institutions of Higher Education ⁽³⁾	901	11.0	1661	22.2	2562	16.3
Institutions of Further Education	2338	28.5	3056	40.9	5394	34.4
Employment	1493	18.2	912	12.2	2405	15.3
Unemployment	385	4.7	361	4.8	746	4.8
Training ⁽⁴⁾	2897	35.3	1290	17.3	4187	26.7
Destinations Unknown	190	2.3	195	2.6	385	2.5
TOTAL NON GRAMMAR	8204	100.0	7475	100.0	15679	100.0
TOTAL						
Institutions of Higher Education ⁽³⁾	4027	30.9	5528	44.3	9555	37.4
Institutions of Further Education	3328	25.5	3864	30.9	7192	28.2
Employment	1781	13.7	1095	8.8	2876	11.3
Unemployment	429	3.3	412	3.3	841	3.3
Training ⁽⁴⁾	3193	24.5	1337	10.7	4530	17.7
Destinations Unknown	279	2.1	255	2.0	534	2.1
TOTAL LEAVERS	13037	100.0	12491	100.0	25528	100.0

NOTES

1. Excludes special and independent schools.
2. Destination is defined by Institution. Institutions may provide courses at both Further and Higher Education levels.
3. Includes universities and teacher training colleges.
4. Numbers entering training include those entering the Jobskills programme, operated by the Department for Employment and Learning. Training on Jobskills is delivered by a range of training providers, including Further Education Colleges. Jobskills trainees who receive training at Further Education Colleges are recorded as being in training and not in Further Education. This convention avoids double counting of Jobskills trainees