

Statistical Press Release

5 August 2010

Coverage

Northern Ireland

Theme

Children, Education and Skills

Issued by

Statistics & Research Branch
Department of Education
Rathgael House
Balloo Road
Rathgill
BANGOR BT19 7PR

Telephone

Press Office:
028 9127 9701
Statistics & Research Branch:
028 9127 9401

Statistician

Karen McCullough

Email

statistics@deni.gov.uk

Internet

[http://www.deni.gov.uk/index/
32-statisticsandresearch_pg.htm](http://www.deni.gov.uk/index/32-statisticsandresearch_pg.htm)

PUPIL: TEACHER RATIOS AND TEACHER WORKFORCE STATISTICS IN GRANT AIDED SCHOOLS IN NORTHERN IRELAND 2009/10 (REVISED)

(The Pupil: Teacher Ratios (PTRs) for primary and preparatory departments of grammar schools have been revised to correct for an inaccurate number of full-time equivalent pupils previously used. The effect of this revision is to reduce the primary PTR from 20.7 to 20.4 and the PTR for preparatory departments of grammar schools has reduced from 17.2 to 17.1. The overall PTR for all grant-aided schools has changed from 16.9 to 16.8. A number of PTRs for nursery and preparatory departments of grammar schools have also been revised due to an amendment in the rounding methodology.)

Key Points

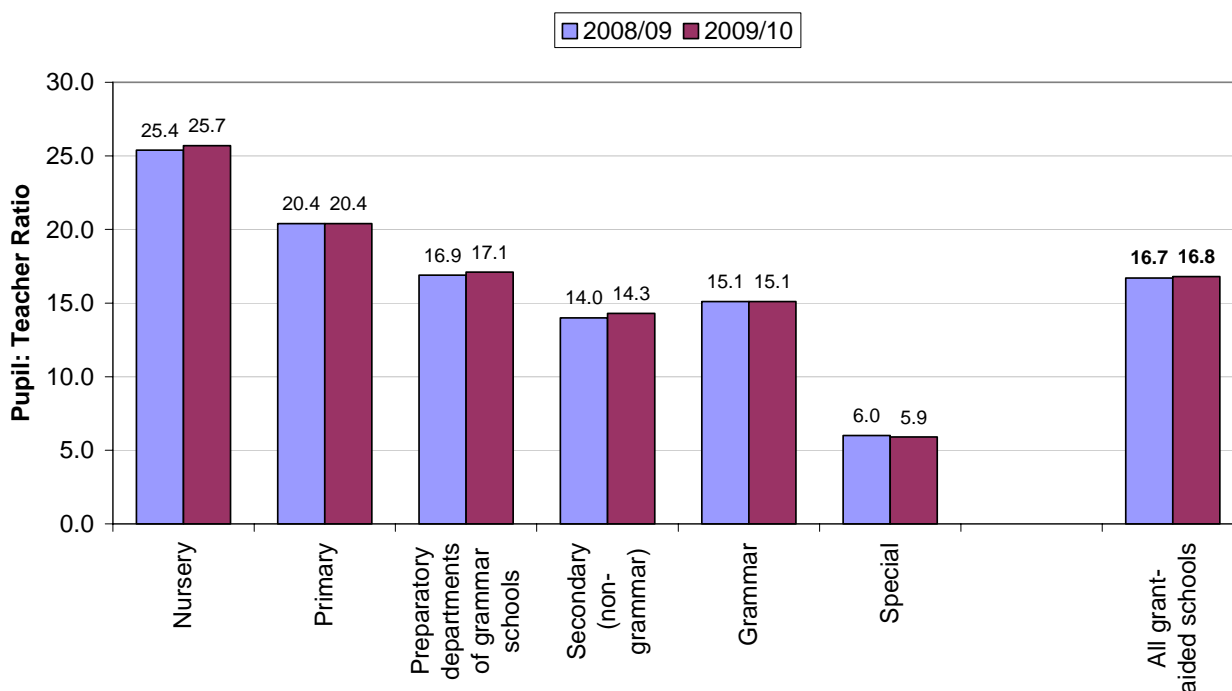
- The overall Pupil: Teacher Ratio (PTR) in 2009/10 is 16.8, an increase of 0.1 from 16.7 in 2008/09 (see Figure 1).
- The PTRs for nursery and secondary (non-grammar) schools have each risen by 0.3 since 2008/09. The PTR for preparatory departments of grammar schools has risen by 0.2. The PTRs for primary and grammar schools have remained the same, and the PTR for special schools has decreased by 0.1 (Figure 1).
- The number of full-time equivalent (FTE) teachers is 18,996.5. This represents a decrease of 213.3 from 19,209.8 in 2008/09 (Figure 3).
- The teacher headcount is 20,076, a decrease of 287 teachers from 20,363 in 2008/09 (Figure 4).
- 74.9% of all teachers are female and 25.1% are male, the same proportions as in 2008/09. In the nursery, primary and preparatory sectors, taken together, 15.2% of teachers are male, while in the secondary and grammar sectors, 33.8% of teachers are male (Figure 5).

- The median age of teachers is 40.3 years, an increase from 40.2 years in 2008/09. 3,128 teachers (15.6%) are aged under 30 and 363 (1.8%) are aged 60 years or above (Figure 6).
- There were 1,217 teacher vacancies at the end of the academic year 2008/09, 1,044 (85.8%) of which had been filled by November 2009 (Figure 7). This compares with 1,160 (85.0%) of 1,365 vacancies filled last year.

Information in this Press Release relates to Pupil: Teacher Ratios, teacher numbers and teacher vacancies. All **figures** referred to are included in the main body of the text. All **tables** are included as annexes.

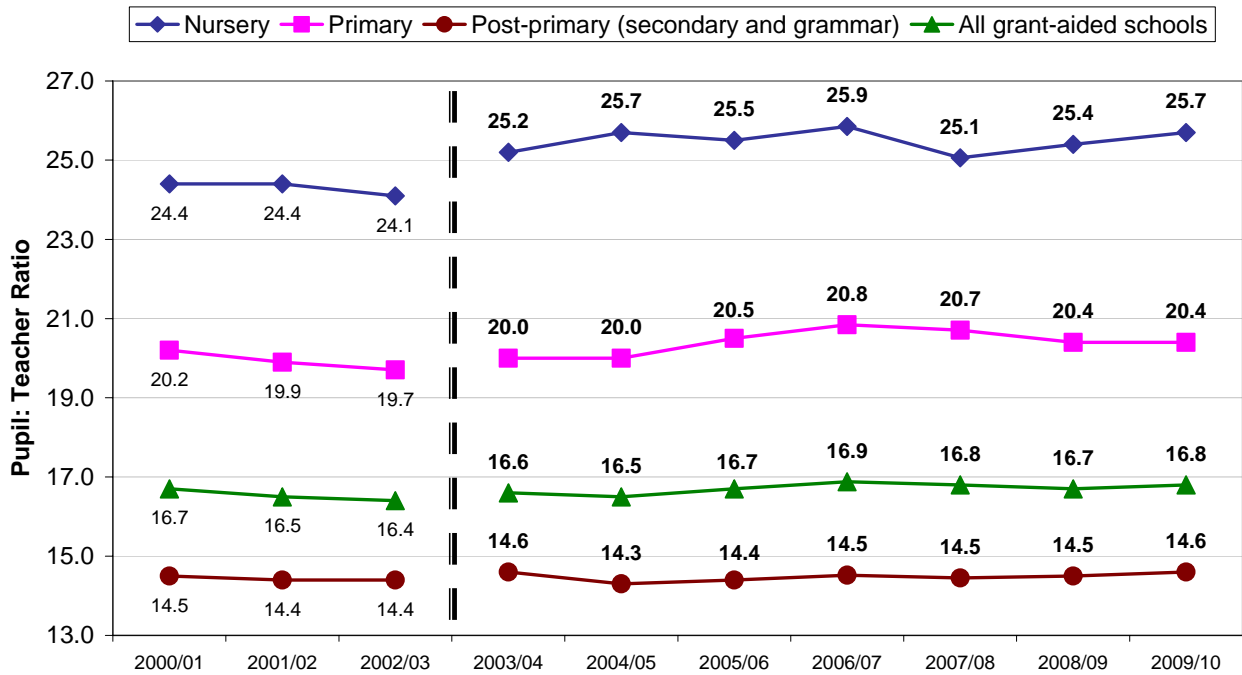
1. Pupil: Teacher Ratios

Figure 1: Pupil: Teacher Ratio by school sector, 2008/09-2009/10



- 1.1 **Figure 1** shows that the Pupil: Teacher Ratios (PTRs) have risen this year for nursery and secondary (non-grammar) schools, and for the preparatory departments of grammar schools. The PTRs for primary and grammar schools have remained the same and the PTR for special schools has decreased by 0.1. This information is broken down by Education and Library Board and school management type in **Table 1**.
- 1.2 **Figure 2** shows the PTRs for nursery, primary, and post-primary (secondary and grammar) schools for each of the past ten years. Within each of these sectors, the PTR has remained relatively static. This information is also given in **Table 2**.
- 1.3 **Table 3** shows that the Pupil: Teacher Ratio is lower than in Wales but greater than in both England and Scotland. Direct comparisons, however, are not advised, as there are differences in the coverage and scope of the data collections.

Figure 2: Pupil: Teacher Ratios, 2000/01 - 2009/10¹

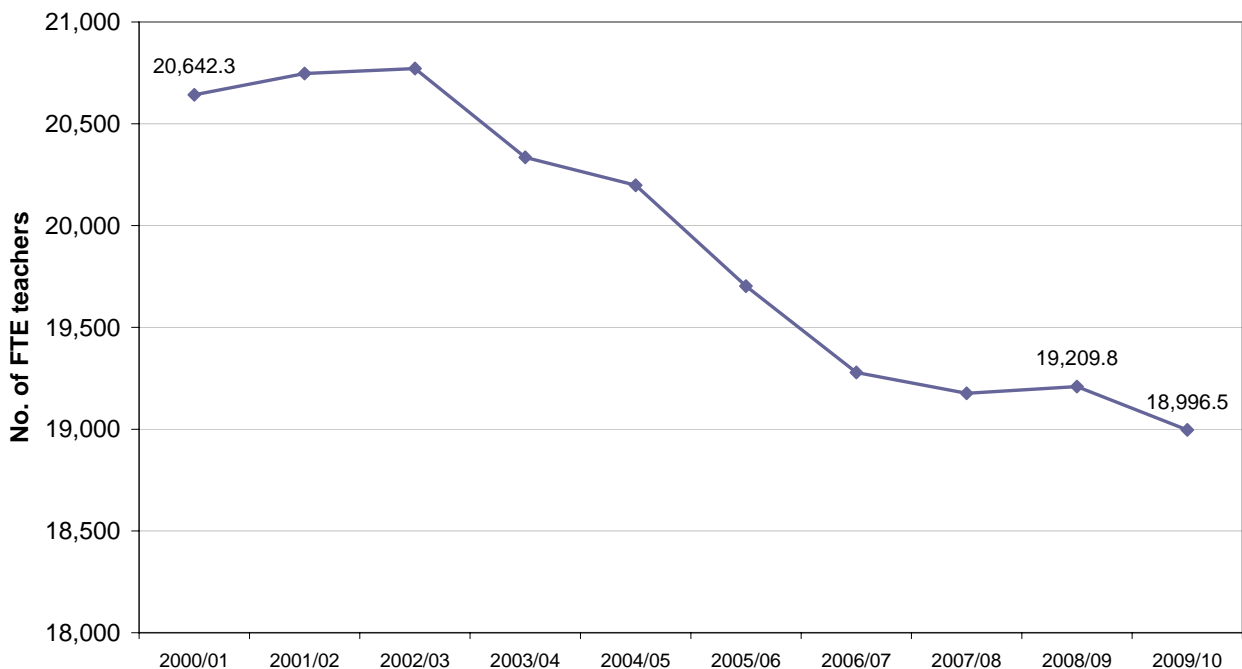


¹ Since 2003/04 the PTR has been compiled using teacher data which has been verified with schools. See Notes to Editors, paragraph 9.

2. Full-time equivalent teacher numbers

2.1 **Figure 3** shows the number of full-time equivalent (FTE) teachers for each of the past ten years. The number of FTE teachers has decreased this year by 213.3, and by 1,645.8 over the past ten years. This information is broken down by Education and Library Board, school type, and school management type in **Tables 4 and 5**.

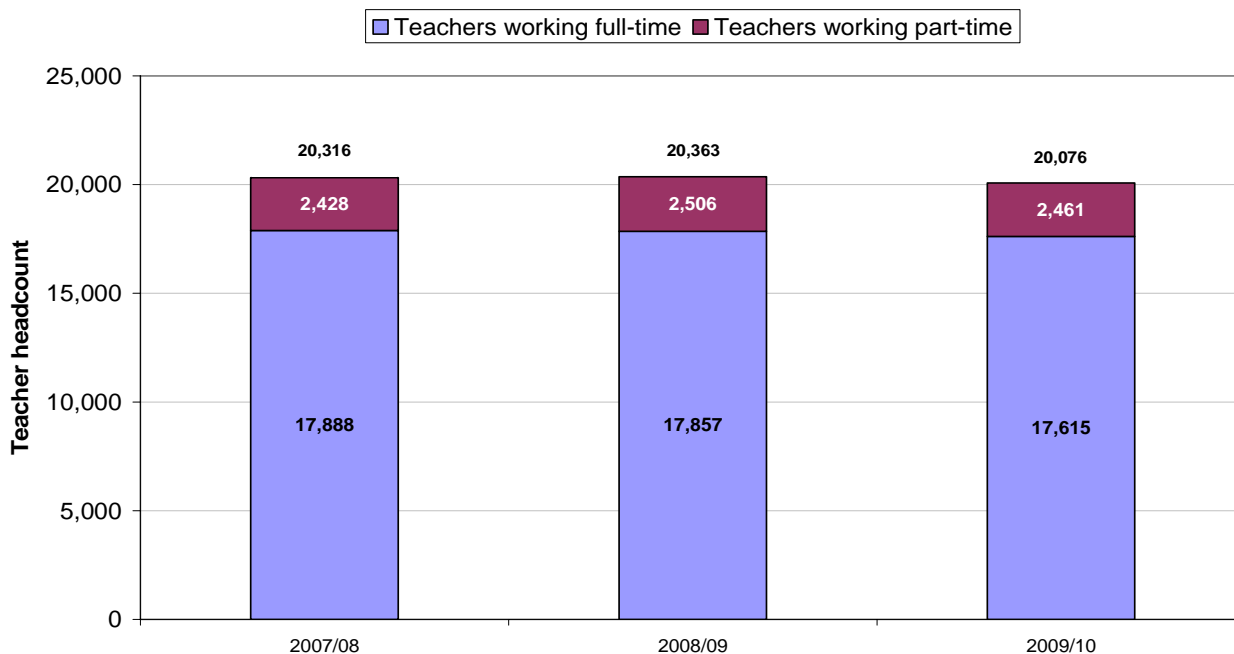
Figure 3. Full-time equivalent teachers, 2000/01-2009/10



3. Teacher headcount and characteristics

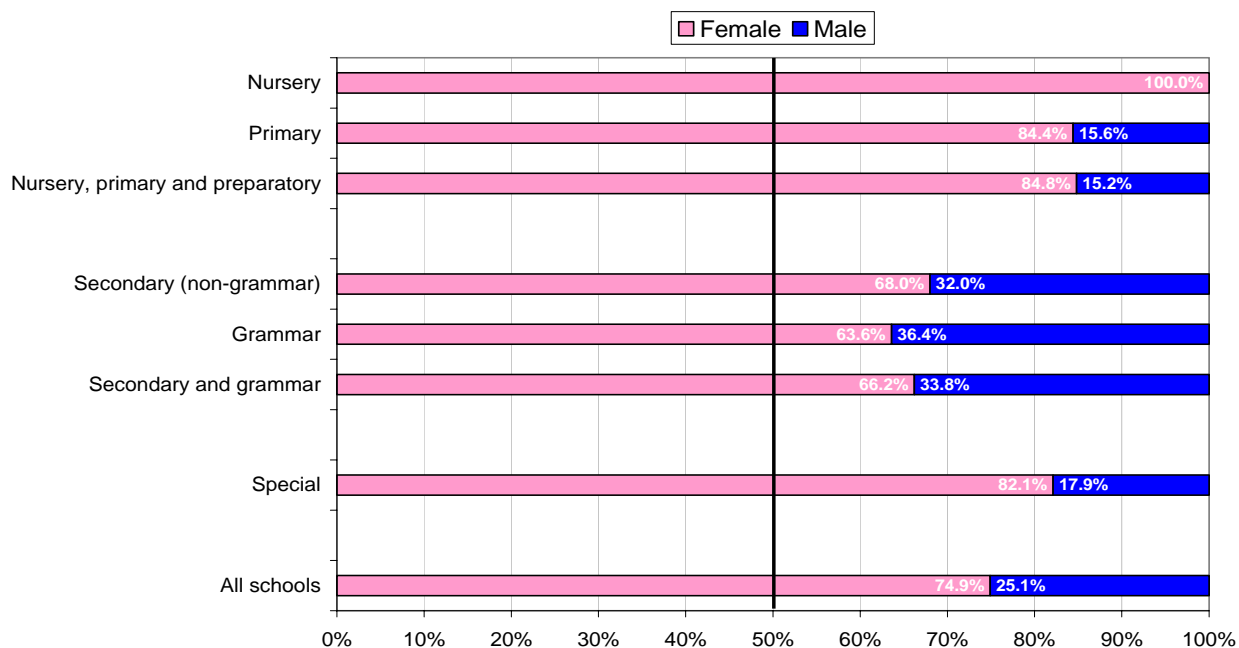
3.1 **Figure 4** shows the teacher headcount for each of the past three years, broken down by full-time/part-time working. The headcount has decreased this year by 287. The proportion of teachers working part-time in 2009/10 is 12.3%, up from 12.0% in 2007/08.

Figure 4: Teacher headcount, 2007/08-2009/10



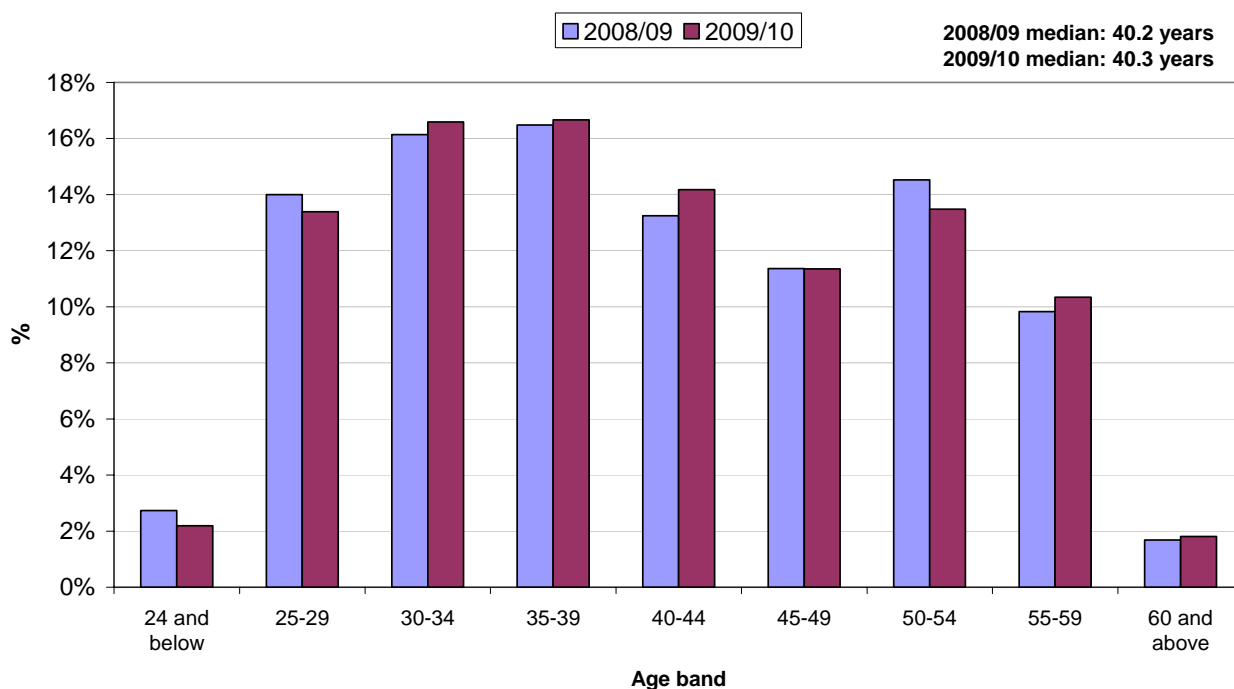
3.2 **Figure 5** shows how the relative proportions of male and female teachers vary by school type. Overall, the proportions are 74.9% female and 25.1% male, the same proportion as in 2008/09.

Figure 5: Proportions of female and male teachers, 2009/10



3.3 **Figure 6** shows the distribution of teachers' ages. The median age in 2009/10 is 40.3 years. There are proportionally fewer teachers aged below 30 this year than last year, and more teachers aged between 30 and 40.

Figure 6: Proportions of teachers by age band, 2008/09 and 2009/10

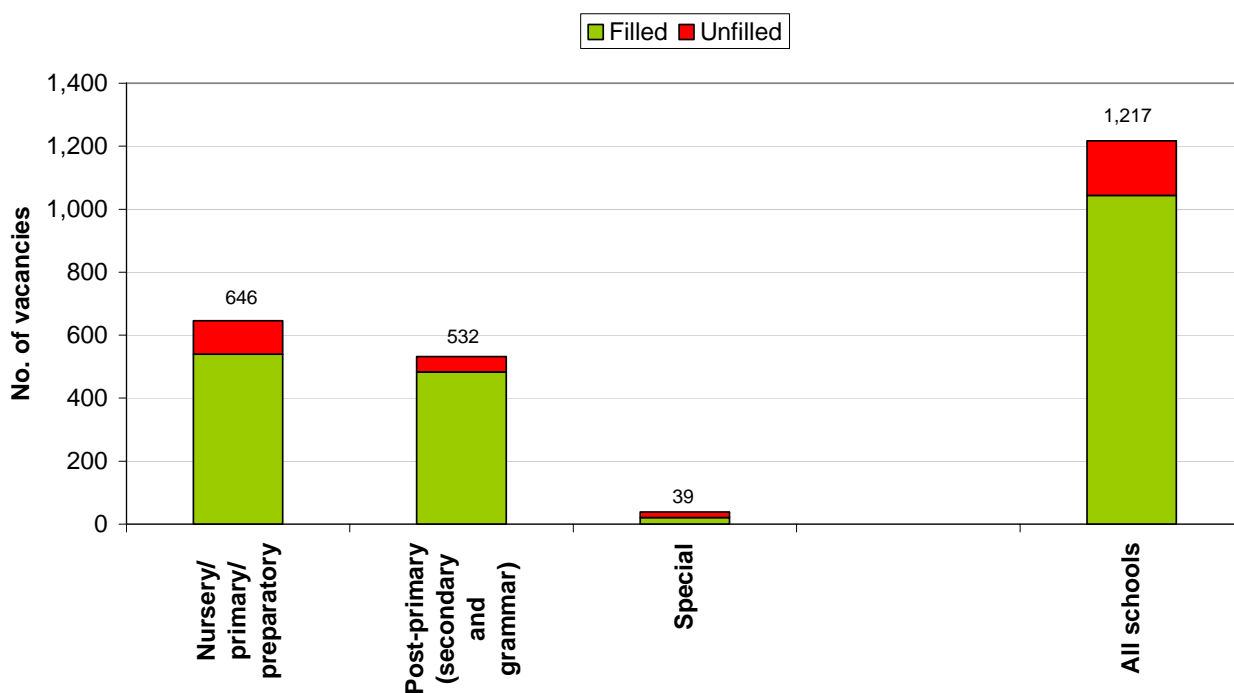


3.4 **Tables 6-9** give breakdowns of unique teachers by gender, age, school type, Education and Library Board, and full-time/part-time working.

4. Teacher vacancies

4.1 **Figure 7** shows the total number of teacher vacancies at the end of 2008/09 and the proportions which were filled or unfilled by November 2009. There were more vacancies, but a larger proportion of unfilled vacancies, in nursery, primary and preparatory schools than in post-primary schools. **Table 10** gives the teacher vacancies data in more detail.

Figure 7: Filled and unfilled vacancies by school type, 2009/10



Tables

- Table 1** Pupil: Teacher Ratios by school type, school management type and Education and Library Board: 2009/10
- Table 2** Pupil: Teacher Ratios by school type and school management type: 2000/01 – 2009/10
- Table 3** Pupil: Teacher Ratios in NI, England, Scotland, Wales and Ireland
- Table 4** Full-time equivalent teacher numbers by school type, school management type and Education and Library Board: 2009/10
- Table 5** Full-time equivalent teacher numbers by school type and school management type: 2000/01 – 2009/10
- Table 6** Unique teacher numbers by gender, age band and Education and Library Board: 2009/10
- Table 7** Unique teacher numbers by full-time/part-time working, age band and Education and Library Board: 2009/10
- Table 8** Unique teacher numbers by gender, full-time/part-time working and Education and Library Board: 2009/10
- Table 9** Unique teacher numbers by gender, age band and school type: 2009/10
- Table 10** Teacher vacancies by school type, grade and employment type: 2009

Notes to Editors

National Statistics

1. These statistics are classified as National Statistics. National Statistics are produced to high professional standards set out in the Code of Practice for Official Statistics. They undergo regular assurance reviews to ensure that they meet customer needs. They are produced free from any political interference.
2. For general enquiries about National Statistics, contact the National Statistics Public Enquiry Service by
telephone: 0845 601 3034
minicom: 01633 812399
e-mail: info@statistics.gov.uk
fax: 01633 652747
written correspondence: Customer Contact Centre,
Room 1.015
Office for National Statistics
Cardiff Road
NEWPORT NP10 8XG
3. You can also find National Statistics on the Internet: www.statistics.gov.uk

Local Management of Schools

4. Since the introduction of Local Management of Schools (LMS) in 1991/92, all secondary schools have had fully delegated budgets, which means that decisions on staffing levels are taken by the schools themselves. Since 1998/99, all primary schools have also had fully delegated budgets.

Pupil: Teacher Ratio and teacher numbers

5. The teacher numbers are based on a reference week in the autumn term: 23-27 November 2009.
6. The following types of teacher are included when aggregating teacher numbers and calculating the Pupil: Teacher Ratio:
 - full-time permanent teachers;
 - part-time permanent teachers; and
 - temporary teachers filling vacant posts, secondments or career breaks.
7. Excluded from all calculations are:
 - substitute teachers;
 - peripatetic teachers; and
 - classroom support staff.
8. For the Pupil: Teacher Ratio (PTR) calculation, numbers are expressed as full-time equivalents, with part-time hours being converted on the basis that a full-time working week is 32.4 hours.
9. Prior to 2003/04, the figures for nursery, primary, secondary (non-grammar) and special schools were extracted from the computerised teachers' payroll system, whilst the figures for grammar schools were obtained from an aggregate statistical return completed by the schools. Now, every grant-aided school is sent a list of teachers derived from the computerised teachers' payroll system, and asked to mark any amendments. This checking process was introduced from 2003/04 for nursery, primary, secondary (non-grammar) and special schools, from 2005/06 for controlled grammar schools, and from 2007/08 for voluntary grammar schools. The net effect of this change in 2003/04 was that the number of teachers as verified by schools was some 400 lower than the number of teachers extracted from the payroll system, because, for example, substitute teachers had been incorrectly recorded.
10. For the first time in 2009/10, schools have been asked to verify the sex and date of birth of their teaching staff. Statistics derived from this information are published in this Press Release for the first time this year.

Pupil: Teacher Ratio: pupil numbers

11. Pupil figures are taken from the Annual Schools' Census conducted in October 2009.
12. Pupil figures are expressed as full-time equivalents. A pupil on a part-time attendance mode is counted as 0.5 of a full-time pupil.

Comparisons

13. Comparisons of PTRs between Education and Library Boards, management types and territories must be interpreted with caution, as differences may be spurious, reflecting other factors such as distributions of school and class sizes, and the proportions of schools of each type (nursery, primary and secondary). There is also variation in the coverage and scope of data collection between territories.

Teacher Vacancies Survey

14. The figures for teacher vacancies are derived from the Teacher Vacancies Survey. This data collection covers all grant-aided schools in Northern Ireland, and was carried out by NISRA Central Survey Unit on behalf of DE Statistics & Research Branch in the autumn term of 2009/10. All figures refer to the position of schools on 2 November 2009. The data is published in this Press Release for the first time this year.

Further enquiries

15. Further analyses relating to PTRs and teacher numbers can be found on the DE website at http://www.deni.gov.uk/index/32-statisticsandresearch_pg.htm. Statistics on school numbers and enrolment, participation rates, and school leavers' qualifications and destinations may also be accessed via this website.
16. For more details about the statistics contained in this Press Release, or to request bespoke analyses of PTR or teacher data, please contact:

Mr. Jim Reid
Statistics and Research Branch
Department of Education
Rathgael House
Balloo Road
Rathgill
BANGOR BT19 7PR

Tel. 028 9127 9401
Fax 028 9127 9594
Email statistics@deni.gsi.gov.uk

17. DE Statistical Press Releases can be accessed on the DE website at http://www.deni.gov.uk/index/32-statisticsandresearch_pg/32_statistical_publications-indexofstatisticalpublications_pg/32_statistical_publications_pressreleases_pg.htm
18. Press enquiries should be made to the Department's Press Office at the same address, telephone 028 9127 9701.

TABLE 1. PUPIL: TEACHER RATIOS IN NORTHERN IRELAND BY EDUCATION AND LIBRARY BOARD, SCHOOL TYPE AND MANAGEMENT TYPE: 2009/10

School type	Management type	Belfast	Western	North Eastern	South Eastern	Southern	Total
Nursery	Controlled	26.1	26.2	24.0	25.5	25.8	25.4
	Catholic Maintained	25.9	-	25.6	25.9	27.6	26.2
	Total	26.0	26.2	24.2	25.7	26.4	25.7
Primary ¹	Controlled	20.6	20.3	20.6	21.0	20.0	20.5
	Controlled Integrated	19.4	10.7	20.2	22.1	20.0	20.7
	Catholic Maintained	20.5	20.3	20.6	20.3	20.3	20.4
	Grant Maintained Integrated	21.2	19.2	21.5	21.7	21.7	21.1
	Other Maintained	18.0	16.9	12.9	14.0	18.5	16.8
	Total	20.4	20.2	20.5	20.8	20.2	20.4
Preparatory departments of grammar schools	Controlled	-	-	-	16.5	-	16.5
	Voluntary	17.1	-	14.8	18.5	12.6	17.2
	Total	17.1	-	14.8	17.7	12.6	17.1
Secondary (excluding grammar)	Controlled	14.4	14.2	14.0	14.7	14.6	14.4
	Controlled Integrated	-	-	13.9	13.9	13.8	13.9
	Catholic Maintained	14.3	14.1	14.3	14.1	14.8	14.4
	Grant Maintained Integrated	13.8	13.9	13.3	14.3	14.4	13.9
	Other Maintained	12.5	-	-	-	-	12.5
	Total	14.2	14.1	14.0	14.4	14.7	14.3
Grammar schools	Controlled	15.3	15.4	15.0	15.5	14.9	15.2
	Voluntary	15.1	15.1	15.0	14.7	15.2	15.1
	Total	15.2	15.2	15.0	15.0	15.1	15.1
Post-primary total		14.7	14.5	14.4	14.6	14.8	14.6
Special (excluding hospital schools)	Controlled	6.0	5.5	6.7	5.9	6.8	6.1
	Catholic Maintained	4.2	-	-	-	-	4.2
	Other Maintained	-	-	2.8	-	-	2.8
	Total	5.7	5.5	6.3	5.9	6.8	5.9
All grant-aided schools	Controlled	16.1	16.2	17.0	17.2	16.9	16.8
	Controlled Integrated	19.4	10.7	16.5	17.2	14.7	16.8
	Catholic Maintained	17.2	17.6	17.8	18.1	18.1	17.7
	Grant Maintained Integrated	15.3	15.5	15.5	16.0	17.7	15.9
	Other Maintained	15.5	16.9	8.5	14.0	18.5	14.7
	Voluntary	15.3	15.1	15.0	15.0	15.2	15.1
	Grand total	16.2	16.7	16.8	17.0	17.2	16.8

¹ includes teachers in nursery classes

- indicates no schools in this category

TABLE 2. PUPIL: TEACHER RATIOS IN NORTHERN IRELAND BY SCHOOL TYPE AND MANAGEMENT TYPE: 2000/01 - 2009/10

Unverified basis New (verified) basis

School Type	Management Type	2000/01	2001/02	2002/03	2003/04	2003/04	2004/05	2005/06	2006/07	2007/08	2008/09	2009/10
Nursery	Controlled	24.3	23.9	23.5	24.3	25.2	25.5	25.6	25.8	24.9	25.2	25.4
	Catholic Maintained	24.8	25.5	25.2	24.5	25.1	26.1	25.4	26.0	25.3	25.9	26.2
	Total	24.4	24.4	24.1	24.4	25.2	25.7	25.5	25.9	25.1	25.4	25.7
Primary ¹	Controlled	20.4	20.2	20.0	19.7	20.3	20.2	20.6	20.8	20.7	20.4	20.5
	Controlled Integrated	17.6	18.4	17.8	17.3	17.8	18.4	18.4	19.5	19.0	19.2	20.7
	Catholic Maintained	20.0	19.7	19.4	19.2	19.8	19.9	20.5	21.0	20.9	20.5	20.4
	Grant Maintained Integrated	20.6	19.8	20.7	20.9	21.5	20.9	20.8	21.2	20.5	20.6	21.1
	Other Maintained	18.4	17.2	17.8	17.7	17.6	18.2	17.4	17.1	16.7	16.3	16.8
	Total	20.2	19.9	19.7	19.4	20.0	20.0	20.5	20.8	20.7	20.4	20.4
Preparatory departments of grammar schools	Controlled	17.9	18.4	18.1	17.0	17.0	16.8	18.6	16.6	17.3	17.8	16.5
	Voluntary	16.4	16.6	17.1	17.0	17.0	17.4	17.3	16.8	16.8	16.7	17.2
	Total	16.6	16.9	17.2	17.0	17.0	17.3	17.5	16.8	16.9	16.9	17.1
Secondary (excluding grammar)	Controlled	14.1	14.0	13.8	13.8	14.2	13.9	14.1	14.2	13.9	14.1	14.4
	Controlled Integrated	13.5	13.1	13.3	13.6	13.7	13.4	13.7	13.3	13.0	13.3	13.9
	Catholic Maintained	13.9	13.9	13.9	13.8	14.1	13.7	13.8	13.9	14.0	14.1	14.4
	Grant Maintained Integrated	13.1	13.0	13.5	13.8	14.2	14.1	13.9	14.0	13.9	13.7	13.9
	Other Maintained	11.6	11.2	10.5	11.5	11.5	13.4	12.7	13.1	13.7	11.3	12.5
	Total	13.9	13.8	13.8	13.8	14.1	13.8	13.9	14.0	13.9	14.0	14.3
Grammar	Controlled	15.4	15.4	15.7	15.5	15.5	15.4	15.5	15.6	15.7	15.3	15.2
	Voluntary	15.4	15.2	15.2	15.2	15.2	15.1	15.2	15.2	15.2	15.1	15.1
	Total	15.4	15.3	15.3	15.2	15.2	15.2	15.3	15.3	15.3	15.1	15.1
Secondary total	14.5	14.4	14.4	14.3	14.6	14.3	14.4	14.5	14.5	14.5	14.6	
Special (excluding hospital schools)	Controlled	6.0	6.0	6.1	6.0	6.0	6.0	6.0	6.0	6.2	6.1	6.1
	Catholic Maintained	4.8	5.3	5.2	4.4	4.6	4.7	5.1	5.3	5.2	5.1	4.2
	Other Maintained	4.3	3.7	3.6	3.8	3.8	3.5	3.2	3.8	2.9	3.4	2.8
	Total	5.9	5.9	6.0	5.8	5.9	5.8	5.8	5.9	6.0	6.0	5.9
All grant-aided schools	Controlled	16.8	16.6	16.4	16.3	16.7	16.5	16.8	16.9	16.8	16.7	16.8
	Controlled Integrated	15.0	14.9	14.9	15.1	15.4	15.5	15.7	15.9	15.4	15.9	16.8
	Catholic Maintained	17.3	17.2	17.0	16.8	17.3	17.1	17.5	17.8	17.8	17.7	17.7
	Grant Maintained Integrated	15.1	14.8	15.4	15.7	16.1	15.9	15.8	16.0	15.8	15.6	15.9
	Other Maintained	14.0	13.6	14.1	14.5	14.4	15.2	14.7	15.1	14.7	14.2	14.7
	Voluntary	15.4	15.3	15.3	15.2	15.2	15.2	15.3	15.2	15.2	15.2	15.1
	Grand total	16.7	16.5	16.4	16.3	16.6	16.5	16.7	16.9	16.8	16.7	16.8

¹ includes pupils and teachers in nursery classes

TABLE 3. PUPIL: TEACHER RATIOS IN NORTHERN IRELAND, ENGLAND, SCOTLAND, WALES AND IRELAND

	NI	England²	Scotland³	Wales⁴	Ireland⁵
Nursery	25.7	16.2	n/a	15.4	n/a
Primary	20.4	21.3	15.8	20.0	15.9
Post-primary	14.6	15.7	11.9	16.4	13.0
Overall	16.8	16.7	13.4	17.5	14.5

¹ Most recently published. NI, England and Scotland refer to 2009/10. Wales and Ireland refer to 2008/09

² Source: Department for Education, 'School Workforce in England, January 2010 (Provisional)'. Published May 2010. Census date January 2010.

³ Source: Scottish Executive, 'Teachers in Scotland, 2009', Table 1.1. Census date September 2009. Published November 2009.

⁴ Source: Welsh Assembly Government, 'Schools in Wales: General Statistics 2009', Chapter 1, Table 1.1. Published June 2009. Census date January 2009. Data based on January 2010 Census will be published in June 2010.

⁵ Source: Department of Education and Science, 'Education Statistics 2008/2009'.

TABLE 4. FULL-TIME EQUIVALENT (FTE) TEACHERS IN NORTHERN IRELAND BY EDUCATION AND LIBRARY BOARD, SCHOOL TYPE AND MANAGEMENT TYPE: 2009/10

School type	Management type	Belfast	Western	North Eastern	South Eastern	Southern	Total
Nursery	Controlled	26.0	24.0	31.3	20.6	25.4	127.2
	Catholic Maintained	34.2	-	4.1	15.1	11.3	64.7
	Total	60.2	24.0	35.3	35.6	36.7	191.9
Primary ¹	Controlled	462.2	410.6	1,090.2	949.2	709.0	3,621.2
	Controlled Integrated	21.5	3.0	49.6	66.3	5.4	145.8
	Catholic Maintained	549.1	930.4	556.2	504.0	1,098.0	3,637.7
	Grant Maintained Integrated	30.4	57.7	58.6	55.8	57.6	260.1
	Other Maintained	55.9	24.0	21.7	12.4	29.2	143.1
Total	1,119.1	1,425.6	1,776.3	1,587.7	1,899.2	7,807.9	
Preparatory departments of grammar schools	Controlled	-	-	-	20.9	-	20.9
	Voluntary	76.9	-	8.4	31.4	2.8	119.5
	Total	76.9	-	8.4	52.4	2.8	140.5
Secondary (excluding grammar)	Controlled	242.8	255.8	657.7	464.0	586.8	2,207.1
	Controlled Integrated	-	-	70.3	97.0	31.1	198.4
	Catholic Maintained	554.8	714.5	449.3	320.7	808.0	2,847.4
	Grant Maintained Integrated	117.4	136.3	167.2	182.9	68.3	672.0
	Other Maintained	45.0	-	-	-	-	45.0
Total	960.0	1,106.6	1,344.4	1,064.7	1,494.2	5,969.9	
Grammar schools	Controlled	122.2	160.5	306.4	221.2	170.1	980.5
	Voluntary	954.2	558.2	600.4	470.5	573.4	3,156.7
	Total	1,076.4	718.7	906.8	691.8	743.5	4,137.2
Post-primary total		2,036.4	1,825.3	2,251.2	1,756.5	2,237.7	10,107.0
Special (excluding hospital schools)	Controlled	176.3	117.2	140.6	189.2	65.8	689.1
	Catholic Maintained	43.4	-	-	-	-	43.4
	Other Maintained	-	-	16.7	-	-	16.7
	Total	219.7	117.2	157.3	189.2	65.8	749.3
All grant-aided schools	Controlled	1,029.5	968.1	2,226.2	1,865.2	1,557.1	7,646.1
	Controlled Integrated	21.5	3.0	119.9	163.3	36.5	344.2
	Catholic Maintained	1,181.6	1,644.9	1,009.5	839.8	1,917.4	6,593.1
	Grant Maintained Integrated	147.8	194.0	225.7	238.7	125.9	932.1
	Other Maintained	100.8	24.0	38.5	12.4	29.2	204.9
	Voluntary	1,031.1	558.2	608.8	502.0	576.2	3,276.2
Grand total		3,512.3	3,392.1	4,228.6	3,621.4	4,242.2	18,996.5

¹ includes teachers in nursery classes

- indicates no schools in this category

TABLE 5. FULL-TIME EQUIVALENT (FTE) TEACHERS IN NORTHERN IRELAND BY SCHOOL TYPE AND MANAGEMENT TYPE: 2000/01 - 2009/10

School type	Management type	<i>Unverified basis</i>				<i>New (verified) basis</i>						
		2000/01	2001/02	2002/03	2003/04	2003/04	2004/05	2005/06	2006/07	2007/08	2008/09	2009/10
Nursery	Controlled	128.8	135.5	140.0	137.0	132.2	129.3	129.3	126.0	129.9	128.3	127.2
	Catholic Maintained	60.9	59.0	65.9	67.1	65.5	63.8	66.1	65.3	66.9	65.5	64.7
	Total	189.7	194.5	205.9	204.1	197.7	193.1	195.4	191.3	196.7	193.9	191.9
Primary ¹	Controlled	4,234.1	4,227.4	4,203.4	4,165.9	4,050.4	3,996.2	3,845.4	3,749.1	3,702.1	3,687.8	3,621.2
	Controlled Integrated	82.3	81.2	84.5	104.9	101.8	108.4	111.5	107.3	118.8	126.7	145.8
	Catholic Maintained	4,159.5	4,168.1	4,154.1	4,126.1	4,007.8	3,910.5	3,751.5	3,627.5	3,622.2	3,654.5	3,637.7
	Grant Maintained Integrated	189.2	206.4	206.4	212.0	206.0	221.5	230.7	237.4	253.8	259.9	260.1
	Other Maintained	76.1	97.3	104.3	114.0	115.1	115.9	124.2	132.2	136.3	143.8	143.1
	Total	8,741.2	8,780.4	8,752.6	8,723.0	8,481.1	8,352.7	8,063.3	7,853.5	7,833.2	7,872.7	7,807.9
Preparatory departments of grammar schools	Controlled	24.1	22.9	23.6	23.7	23.7	23.0	19.9	20.1	19.4	19.4	20.9
	Voluntary	145.9	137.1	130.2	130.0	130.0	126.1	125.1	125.7	126.0	126.2	119.5
	Total	170.0	160.0	153.8	153.7	153.7	149.1	145.0	145.9	145.4	145.4	140.5
Secondary (excluding grammar)	Controlled	2,734.3	2,729.3	2,739.3	2,707.7	2,633.6	2,615.4	2,523.3	2,446.8	2,383.4	2,329.6	2,207.1
	Controlled Integrated	143.0	150.2	150.6	147.7	146.6	152.4	150.2	150.2	177.6	157.7	198.4
	Catholic Maintained	3,261.8	3,228.5	3,222.4	3,214.9	3,138.6	3,140.9	3,099.5	2,982.7	2,919.4	2,894.6	2,847.4
	Grant Maintained Integrated	516.2	559.3	574.9	583.7	568.6	585.7	609.5	624.3	642.3	683.3	672.0
	Other Maintained	28.6	30.6	34.6	35.4	35.4	32.9	37.0	37.3	37.0	45.5	45.0
	Total	6,683.8	6,697.9	6,721.8	6,689.4	6,522.7	6,527.2	6,419.5	6,241.2	6,159.9	6,110.6	5,969.9
Grammar schools	Controlled	952.8	960.5	952.2	961.5	961.5	967.0	958.6	946.3	948.7	972.4	980.5
	Voluntary	3,110.1	3,150.2	3,165.9	3,195.7	3,195.7	3,203.8	3,130.9	3,127.2	3,127.4	3,147.3	3,156.7
	Total	4,062.8	4,110.8	4,118.2	4,157.2	4,157.2	4,170.8	4,089.5	4,073.4	4,076.1	4,119.7	4,137.2
Post-primary schools		10,746.6	10,808.7	10,840.0	10,846.6	10,679.8	10,698.1	10,509.0	10,314.6	10,235.9	10,230.3	10,107.0
Special (excluding hospital schools)	Controlled	718.0	728.1	747.4	758.7	749.1	731.5	719.6	712.3	698.6	705.4	689.1
	Catholic Maintained	49.5	46.9	45.9	50.6	49.4	49.2	47.8	44.3	46.3	46.2	43.4
	Other Maintained	27.2	28.1	26.0	24.2	24.2	24.4	22.5	17.3	20.3	15.7	16.7
	Total	794.7	803.1	819.3	833.5	822.7	805.1	789.8	774.0	765.1	767.4	749.3
All grant-aided schools	Controlled	8,792.0	8,803.6	8,805.9	8,754.5	8,550.5	8,462.5	8,196.1	8,000.6	7,882.0	7,842.9	7,646.1
	Controlled Integrated	225.3	231.4	235.1	252.6	248.4	260.8	261.7	257.5	296.4	284.4	344.2
	Catholic Maintained	7,531.7	7,502.5	7,488.2	7,458.8	7,261.3	7,164.4	6,964.9	6,719.9	6,654.8	6,660.8	6,593.1
	Grant Maintained Integrated	705.4	765.7	781.3	795.6	774.5	807.2	840.2	861.7	896.1	943.2	932.1
	Other Maintained	131.8	156.0	164.9	173.6	174.7	173.3	183.7	186.8	193.7	205.0	204.9
	Voluntary	3,256.0	3,287.3	3,296.1	3,325.7	3,325.7	3,329.9	3,256.0	3,252.9	3,253.4	3,273.5	3,276.2
	Grand total	20,642.3	20,746.6	20,771.6	20,760.9	20,335.1	20,198.1	19,702.6	19,279.2	19,176.4	19,209.8	18,996.5

¹ includes teachers in nursery classes

TABLE 6. TEACHERS IN NORTHERN IRELAND BY SEX, AGE BAND AND EDUCATION AND LIBRARY BOARD¹: 2009/10

Sex	Age group	Belfast	Western	North Eastern	South Eastern	Southern	Total
Male	24 and under	17	9	28	22	10	86
	25-29	101	71	134	108	130	544
	30-34	155	100	173	125	167	720
	35-39	162	135	155	126	153	731
	40-44	122	161	135	128	159	705
	45-49	118	144	118	125	147	652
	50-54	143	147	153	139	182	764
	55-59	135	120	151	129	142	677
	60 and above	34	36	29	26	27	152
	Total		987	923	1,076	928	1,117
Female	24 and under	61	58	100	68	67	354
	25-29	387	326	560	407	464	2,144
	30-34	458	450	611	529	563	2,611
	35-39	462	488	560	466	639	2,615
	40-44	378	393	429	406	536	2,142
	45-49	294	306	351	315	360	1,626
	50-54	363	318	451	394	417	1,943
	55-59	257	213	330	333	266	1,399
	60 and above	44	29	41	53	44	211
	Total		2,704	2,581	3,433	2,971	3,356
All	24 and under	78	67	128	90	77	440
	25-29	488	397	694	515	594	2,688
	30-34	613	550	784	654	730	3,331
	35-39	624	623	715	592	792	3,346
	40-44	500	554	564	534	695	2,847
	45-49	412	450	469	440	507	2,278
	50-54	506	465	604	533	599	2,707
	55-59	392	333	481	462	408	2,076
	60 and above	78	65	70	79	71	363
	Total		3,691	3,504	4,509	3,899	4,473

¹ Teachers employed at more than one school are counted at the school at which they work the majority of their time.

TABLE 7. TEACHERS IN NORTHERN IRELAND BY FULL-TIME/PART-TIME WORKING, AGE BAND AND EDUCATION AND LIBRARY BOARD¹: 2009/10

Mode of working	Age group	Belfast	Western	North Eastern	South Eastern	Southern	Total
Full-time	24 and under	67	56	108	80	62	373
	25-29	454	365	639	472	548	2,478
	30-34	558	503	689	552	651	2,953
	35-39	543	571	578	459	677	2,828
	40-44	436	506	460	410	598	2,410
	45-49	363	424	412	372	453	2,024
	50-54	466	443	518	472	540	2,439
	55-59	345	314	405	396	355	1,815
	60 and above	65	60	54	65	51	295
Total		3,297	3,242	3,863	3,278	3,935	17,615
Part-time	24 and under	11	11	20	10	15	67
	25-29	34	32	55	43	46	210
	30-34	55	47	95	102	79	378
	35-39	81	52	137	133	115	518
	40-44	64	48	104	124	97	437
	45-49	49	26	57	68	54	254
	50-54	40	22	86	61	59	268
	55-59	47	19	76	66	53	261
	60 and above	13	5	16	14	20	68
Total		394	262	646	621	538	2,461
All	24 and under	78	67	128	90	77	440
	25-29	488	397	694	515	594	2,688
	30-34	613	550	784	654	730	3,331
	35-39	624	623	715	592	792	3,346
	40-44	500	554	564	534	695	2,847
	45-49	412	450	469	440	507	2,278
	50-54	506	465	604	533	599	2,707
	55-59	392	333	481	462	408	2,076
	60 and above	78	65	70	79	71	363
Total		3,691	3,504	4,509	3,899	4,473	20,076

¹ Teachers employed at more than one school are counted at the school at which they work the majority of their time.

TABLE 8. TEACHERS IN NORTHERN IRELAND BY SEX, FULL-TIME/PART-TIME WORKING AND EDUCATION AND LIBRARY BOARD¹: 2009/10

Sex	Mode of working	Belfast	Western	North Eastern	South Eastern	Southern	Total
Male	Full-time	955	905	1,039	911	1,087	4,897
	Part-time	32	18	37	17	30	134
	Total	987	923	1,076	928	1,117	5,031
Female	Full-time	2,342	2,337	2,824	2,367	2,848	12,718
	Part-time	362	244	609	604	508	2,327
	Total	2,704	2,581	3,433	2,971	3,356	15,045
All	Full-time	3,297	3,242	3,863	3,278	3,935	17,615
	Part-time	394	262	646	621	538	2,461
	Total	3,691	3,504	4,509	3,899	4,473	20,076

¹ Teachers employed at more than one school are counted at the school at which they work the majority of their time.

TABLE 9. TEACHERS IN NORTHERN IRELAND BY SEX, AGE BAND AND SCHOOL TYPE¹: 2009/10

Sex	Age group	Nursery	Primary	Preparatory	Secondary	Grammar	Special	Total
Male	24 and under	0	29	0	29	28	0	86
	25-29	0	148	2	202	178	14	544
	30-34	0	155	2	314	228	21	720
	35-39	0	194	2	301	221	13	731
	40-44	0	197	2	241	242	23	705
	45-49	0	200	2	232	201	17	652
	50-54	0	187	2	330	223	22	764
	55-59	0	155	4	278	212	28	677
	60 and above	0	45	1	53	48	5	152
Total		0	1,310	17	1,980	1,581	143	5,031
Female	24 and under	1	185	2	96	60	10	354
	25-29	22	956	12	667	402	85	2,144
	30-34	16	1,110	22	880	493	90	2,611
	35-39	28	1,254	21	716	497	99	2,615
	40-44	31	1,134	25	492	383	77	2,142
	45-49	31	767	14	423	332	59	1,626
	50-54	43	853	30	573	343	101	1,943
	55-59	31	715	17	315	213	108	1,399
	60 and above	2	94	3	44	43	25	211
Total		205	7,068	146	4,206	2,766	654	15,045
All	24 and under	1	214	2	125	88	10	440
	25-29	22	1,104	14	869	580	99	2,688
	30-34	16	1,265	24	1,194	721	111	3,331
	35-39	28	1,448	23	1,017	718	112	3,346
	40-44	31	1,331	27	733	625	100	2,847
	45-49	31	967	16	655	533	76	2,278
	50-54	43	1,040	32	903	566	123	2,707
	55-59	31	870	21	593	425	136	2,076
	60 and above	2	139	4	97	91	30	363
Total		205	8,378	163	6,186	4,347	797	20,076

¹ Teachers employed at more than one school are counted at the school at which they work the majority of their time.

TABLE 10. TEACHER VACANCIES IN GRANT-AIDED SCHOOLS IN NORTHERN IRELAND, 2009

School type	Grade of teacher	Permanent positions			Temporary positions			All positions		
		Filled	Unfilled	% filled	Filled	Unfilled	% filled	Filled	Unfilled	% filled
Nursery, primary and preparatory schools	Principal	34	7	82.9%	3	1	75.0%	37	8	82.2%
	Vice-principal	16	8	66.7%	3	1	75.0%	19	9	67.9%
	Classroom teacher	256	60	81.0%	228	29	88.7%	484	89	84.5%
	All teachers	306	75	80.3%	234	31	88.3%	540	106	83.6%
Post-primary (secondary and grammar) schools	Principal	14	3	82.4%	1	0	100.0%	15	3	83.3%
	Vice-principal	15	2	88.2%	2	0	100.0%	17	2	89.5%
	Classroom teacher	252	31	89.0%	199	13	93.9%	451	44	91.1%
	All teachers	281	36	88.6%	202	13	94.0%	483	49	90.8%
Special schools	Principal	1	1	50.0%	1	0	100.0%	2	1	66.7%
	Vice-principal	2	2	50.0%	0	1	0.0%	2	3	40.0%
	Classroom teacher	13	7	65.0%	4	7	36.4%	17	14	54.8%
	All teachers	16	10	61.5%	5	8	38.5%	21	18	53.8%
All grant-aided schools	Principal	49	11	81.7%	5	1	83.3%	54	12	81.8%
	Vice-principal	33	12	73.3%	5	2	71.4%	38	14	73.1%
	Classroom teacher	521	98	84.2%	431	49	89.8%	952	147	86.6%
	All teachers	603	121	83.3%	441	52	89.5%	1,044	173	85.8%