

STATISTICAL PRESS RELEASE

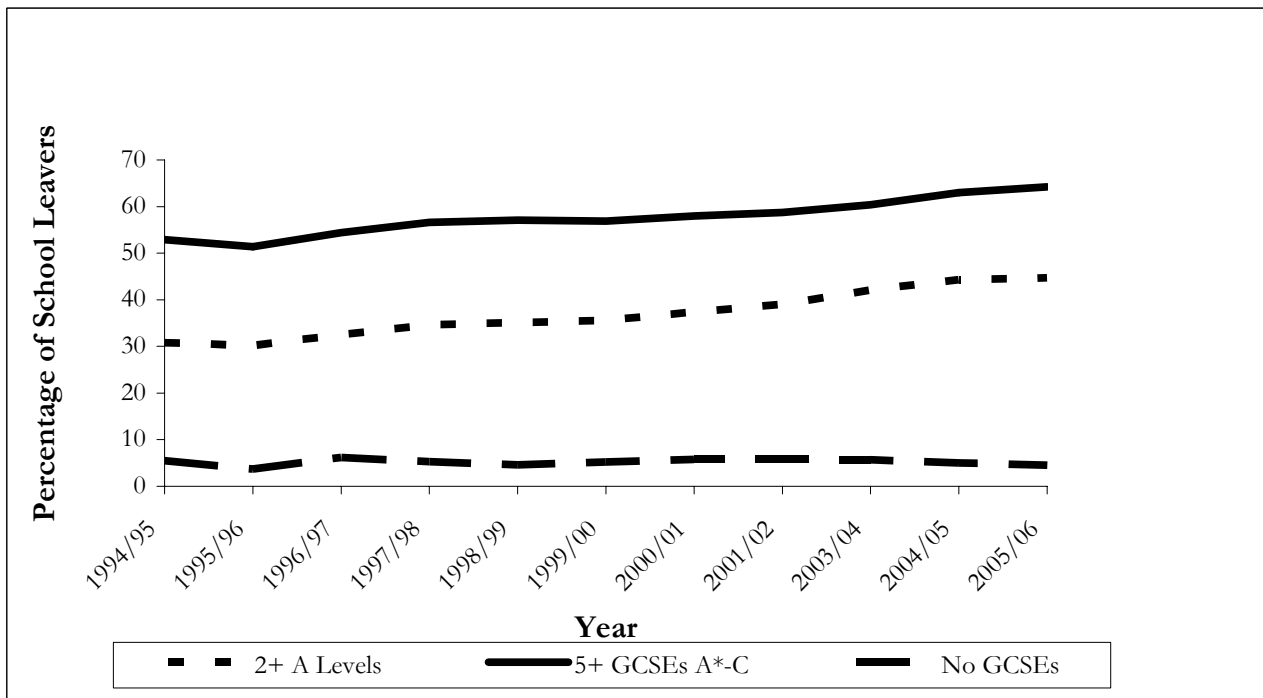
29th May 2007

Qualifications and Destinations of Northern Ireland School Leavers 2005/06

Key Points

- The proportion of school leavers achieving two or more A levels or equivalent was 44.7% in 2005/06, an increase of 7.3 percentage points from 37.4% in 2000/01.
- The proportion of school leavers achieving at least five GCSEs at grades A* - C or equivalent has increased by 6.2 percentage points from 58.0% in 2000/01 to 64.2% in 2005/06.
- The proportion of pupils leaving school with no GCSEs has decreased by 1.3 percentage points from 5.8% in 2000/01 to 4.5% in 2005/06.

Figure 1. HIGHEST QUALIFICATION OF SCHOOL LEAVERS



Notes: Data are missing for 2002/03. Please see note 4 of Notes to Editors.

Qualification data are missing for 3% of school leavers in 1995/96. The apparent dip in the graph between 1994/95 and 1996/97 needs to be seen in this context.

- The proportion of school leavers continuing on to Institutions of Higher Education has increased by 4.5 percentage points from 32.9% in 2000/01 to 37.4% in 2005/06, whereas the proportion continuing on to Institutions of Further Education increased by 1 percentage point from 27.2% in 2000/01 to 28.2% in 2005/06.
- The proportion of pupils unemployed after leaving school decreased between 2000/01 and 2005/06 from 4.2% to 3.3%.

Qualifications

- Girls continue to outperform boys in terms of the highest level of qualification achieved with 47.3% of girls achieving three or more A levels or equivalent in 2005/06 compared to 32.6% of boys, and 53.2% of girls achieving at least two A levels or equivalent compared to 36.6% of boys.
- When the type of school is considered 85.8% of grammar school girls left school with two or more A levels or equivalent compared to 73.2% of grammar school boys (the corresponding proportions for secondary schools were 31.3% for girls and 15.0% for boys).
- When religion of pupil is considered, 47.3% of Catholic school leavers left with two or more A levels compared to 41.0% of Protestant school leavers.
- For those leaving school with at least five GCSEs at grades A* - C or equivalent the proportion of girls remains higher than the proportion of boys (71.2% of girls leaving school in 2005/06 achieved at least five GCSEs at grades A* - C or equivalent compared to 57.5% of boys).
- More than twice as many boys leave school with no GCSEs compared to girls (6.1% of boys and 2.8% of girls).
- The proportion of pupils not entitled to free school meals who achieved two or more A levels or equivalent was higher than those pupils entitled to free school meals at 49.9% and 21.9% respectively. Of those entitled to free school meals, girls continue to outperform boys in terms of highest level of qualification achieved, with 23.0% of girls achieving 3 or more A levels or equivalent, compared to 13.5% of boys.
- The proportion of pupils at schools under Catholic management who achieved 2 or more A levels or equivalent was higher than the proportion of pupils at schools under Other management at 47.4% and 42.5% respectively. Some 81.6% of pupils at grammar schools under Catholic management achieved 2 or more A levels or equivalent, as did 27.6% of pupils at secondary schools under Catholic management. For schools under Other management the equivalent figures were 78.1% and 18.4%.
- In terms of GCSEs, 63.3% of pupils from schools under Other management left school having achieved at least 5+ GCSEs A* - C or equivalent in 2005/06; the corresponding figure for leavers from Catholic managed schools was 65.4%.
- The proportion of grammar school leavers achieving at least two A levels or equivalent has increased from 76.0% in 2000/01 to 79.7% in 2005/06, whereas the proportion

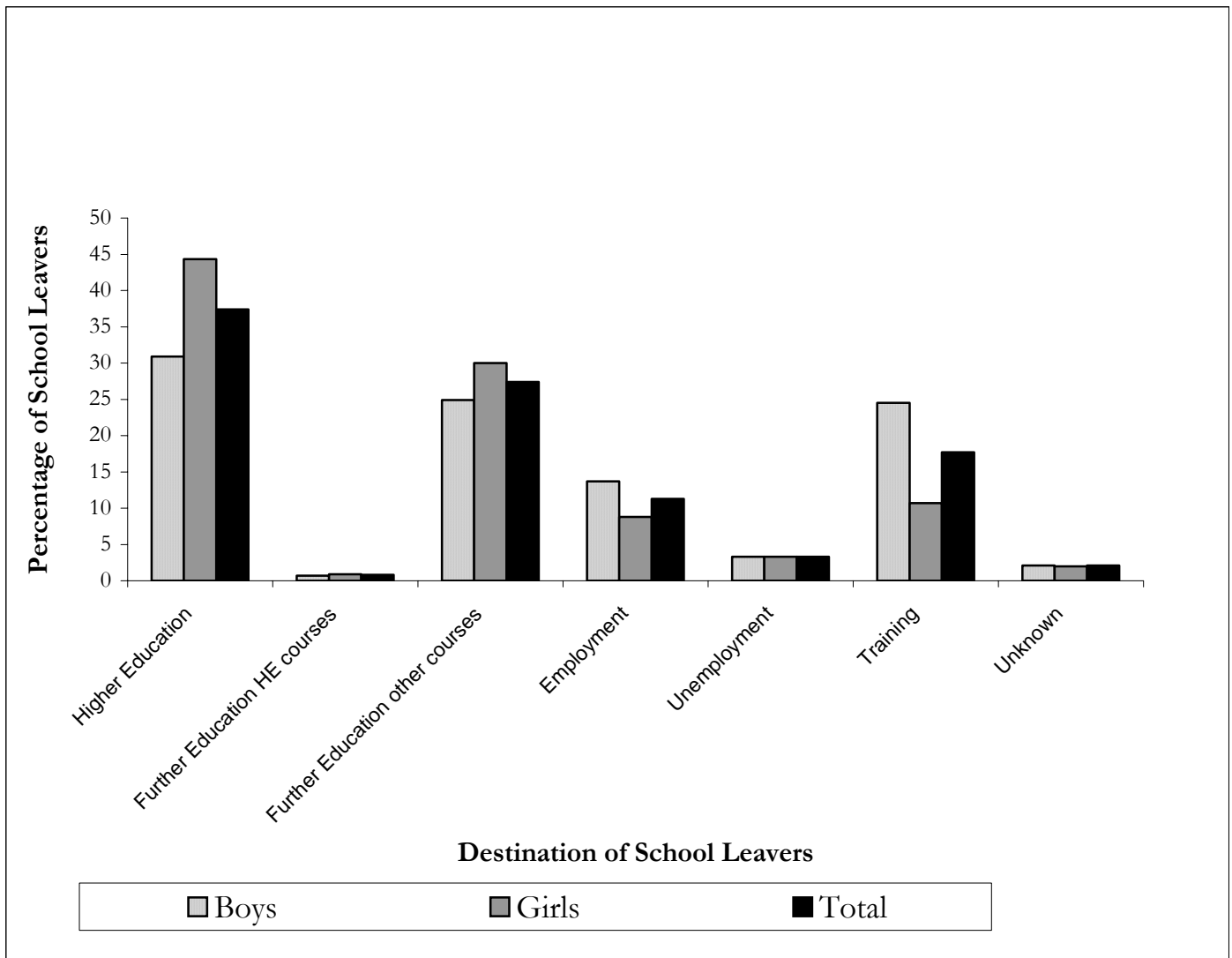
achieving at least five GCSEs at grades A* - C or equivalent has increased from 95.7% in 2000/01 to 96.3% in 2005/06.

- The proportion of secondary school leavers achieving at least two A levels or equivalent has increased from 13.6% in 2000/01 to 22.8% in 2005/06 and the proportion achieving at least five GCSEs at grades A* - C or equivalent has also increased from 34.7% in 2000/01 to 44.1% in 2005/06.

Destinations

- The proportion of girls continuing on to Institutions of Higher Education is significantly higher than that for boys at 44.3% and 30.9% respectively. In total 37.4% of school leavers entered Institutions of Higher Education.
- The proportion of girls continuing on to Institutions of Further Education is larger than that for boys at 30.9% and 25.5% respectively. In total 28.2% of school leavers entered Institutions of Further Education.
- Of those school leavers who continued on to Institutions of Further Education, a small proportion (0.8%) took Higher Education courses. The proportions for boys and girls were 0.7% and 0.9% respectively.
- Girls leaving school are more likely to continue their education with 75.2% of girls entering Institutions of Higher or Further Education compared to 56.4% of boys.
- A higher proportion of school leavers from schools under Catholic management continued on to Institutions of Higher Education (40.2%) than their counterparts from schools under Other management (35.1%). For those pupils entering Further Education, there was a higher proportion of school leavers from schools under Other management (32.0%) than from schools under Catholic management (23.6%).
- A higher proportion of pupils leaving grammar schools under Catholic management attend Institutions of Higher Education (74.5%) than pupils leaving grammar schools under Other management (68.3%). A similar trend emerges for secondary school leavers with 20.4% of pupils from secondary schools under Catholic management continuing on to Institutions of Higher Education and 12.7% of pupils from secondary schools under Other management.
- A higher proportion of pupils leaving grammar schools under Other management attend Institutions of Further Education (21.0%) than pupils leaving grammar schools under Catholic management (14.7%). Similarly, there is a difference among pupils leaving secondary school with 39.4% from Other managed schools and 28.8% from Catholic managed schools continuing on to Institutions of Further Education.
- School leavers not entitled to free school meals are more likely to continue their education with 69.9% entering institutions of Higher or Further Education compared to 46.4% of leavers who were entitled to free school meals.

Figure 2. DESTINATIONS OF SCHOOL LEAVERS BY SEX 2005/06



List of Tables

Table 1.	Highest Qualification of School Leavers by Sex
Table 2.	Highest Qualification of School Leavers by School Type
Table 3.	Highest Qualification of School Leavers by Sex and School Type
Table 4.	Highest Qualification of School Leavers by School Type and Management Type
Table 5.	Highest Qualification of School Leavers by Destinations
Table 6.	Highest Qualification of School Leavers by Sex and Religion of Pupil
Table 7.	Highest Qualification of School Leavers by Ethnic Origin
Table 8.	Highest Qualification of School Leavers by Sex and Free School Meal Entitlement
Table 9.	Destinations of School Leavers by Sex
Table 10.	Destinations of School Leavers by School Type
Table 11.	Destinations of School Leavers by Sex and School Type
Table 12.	Destinations of School Leavers by School Type and Management Type
Table 13.	Destinations of School Leavers by Highest Qualification
Table 14.	Destination of School Leavers by Sex and Religion of Pupil
Table 15.	Destination of School Leavers by Ethnic Origin
Table 16.	Destination of School Leavers by Sex and Free School Meal Entitlement

List of Figures

Figure 1.	Highest Qualification of School Leavers
Figure 2.	Destinations of School Leavers by Sex

Appendix

Table A.	Highest Qualification of School Leavers by Sex and School Type 2000/01
Table B.	Highest Qualification of School Leavers by School Type and Management Type 2000/01

Notes to Editors

National Statistics

1. This is a National Statistics publication. National Statistics are produced to high professional standards set out in the National Statistics Code of Practice. They undergo regular assurance reviews to ensure that they meet customer needs. They are produced free from any political interference.
2. For general enquiries about National Statistics, contact the National Statistics Public Enquiry Service on
Telephone: 0845 601 3034

minicom: 01633 812399

e-mail: info@statistics.gov.uk

Fax:01633 652747

Letters: Customer Contact Centre, Room 1.015, Office for National Statistics, Cardiff Road, Newport, NP10 8XG
3. You can also find National Statistics on the Internet: www.statistics.gov.uk

School Leavers' Survey

4. The School Leavers' Survey was cancelled in 2002/03. Considerable difficulties arose with data collection as a result of technical problems with new software installed in schools. The difficulties delayed the returns, allowing insufficient time for data to be queried with schools – a necessary part of the validation process.
5. All figures quoted are taken from the annual School Leavers' Survey of all secondary and grammar schools in Northern Ireland.
6. Tables referring to highest qualification incorporate equivalence based on the following:

Double Award AVCE Qualifications are equivalent to 2 A levels
Single Award AVCE Qualifications are equivalent to 1 A level
AS AVCE Qualifications are equivalent to 1 AS level
GNVQ Advanced Qualifications are equivalent to 2 A levels Grades A - E
GNVQ Intermediate Qualifications are equivalent to 4 GCSEs Grades A - C*
GNVQ Foundation Qualifications are equivalent to 4 GCSEs Grades D - G
GNVQ Part One Intermediate Qualifications are equivalent to 2 GCSEs Grades A - C*
GNVQ Part One Foundation Qualifications are equivalent to 2 GCSEs Grades D - G

Figures for previous years have been revised to take account of these equivalences.

7. Tables referring to highest qualification contain shaded areas. Figures in the shaded areas overlap with other areas of the table e.g. 5+ GCSEs A* - C are included in the category 5+ GCSEs A* - G. Numbers in the non-shaded areas sum to the total.
8. Destinations are reported by the school leavers and recorded by the school.

Further Information

Requests for further information should be addressed to:-

Mr John Toogood
Statistics and Research Branch
Department of Education
Rathgael House
Balloo Road
Bangor
BT19 7PR

Telephone (028) 9127 9379
Fax (028) 9127 9594
e-mail john.toogood@deni.gov.uk

DE Statistical Press Releases can be accessed at the DE Internet site – <http://www.deni.gov.uk> under the Statistics and Research section.

Special analyses of the School Leavers' Survey can be produced on request.

Press enquiries should be made to the Department's Press Office at the same address, telephone (028) 9127 9701/fax (028) 9127 9271.

TABLE 1

HIGHEST QUALIFICATION OF SCHOOL LEAVERS BY SEX⁽¹⁾

	2005/2006	
	Numbers	%
BOYS		
A levels		
3 or more (or equivalent) ⁽²⁾	4249	32.6
2 (or equivalent) ⁽²⁾	521	4.0
1 ⁽²⁾	229	1.8
GCSEs		
5+ A*-C (or equivalent) ⁽³⁾	2496	19.1
1-4 A*-C (or equivalent) ⁽³⁾	2756	21.1
Other grades (1+ D-G) ⁽⁴⁾	1986	15.2
5+ A*-G (or equivalent) ⁽⁵⁾	5881	45.1
1-4 A*-G (or equivalent) ⁽⁵⁾	1357	10.4
No GCSEs ⁽⁶⁾	800	6.1
No Formal Qualifications ⁽⁷⁾	556	4.3
TOTAL BOYS	13037	100
GIRLS		
A levels		
3 or more (or equivalent) ⁽²⁾	5910	47.3
2 (or equivalent) ⁽²⁾	733	5.9
1 ⁽²⁾	237	1.9
GCSEs		
5+ A*-C (or equivalent) ⁽³⁾	2019	16.2
1-4 A*-C (or equivalent) ⁽³⁾	2133	17.1
Other grades (1+ D-G) ⁽⁴⁾	1107	8.9
5+ A*-G (or equivalent) ⁽⁵⁾	4582	36.7
1-4 A*-G (or equivalent) ⁽⁵⁾	676	5.4
No GCSEs ⁽⁶⁾	352	2.8
No Formal Qualifications ⁽⁷⁾	261	2.1
TOTAL GIRLS	12491	100
ALL		
A levels		
3 or more (or equivalent) ⁽²⁾	10159	39.8
2 (or equivalent) ⁽²⁾	1254	4.9
1 ⁽²⁾	466	1.8
GCSEs		
5+ A*-C (or equivalent) ⁽³⁾	4515	17.7
1-4 A*-C (or equivalent) ⁽³⁾	4889	19.2
Other grades (1+ D-G) ⁽⁴⁾	3093	12.1
5+ A*-G (or equivalent) ⁽⁵⁾	10463	41.0
1-4 A*-G (or equivalent) ⁽⁵⁾	2033	8.0
No GCSEs ⁽⁶⁾	1152	4.5
No Formal Qualifications ⁽⁷⁾	817	3.2
TOTAL LEAVERS	25528	100

NOTES

1. Excludes special and independent schools.
2. Includes AVCE qualifications.
3. Includes Grades A*-C only and GNVQ Intermediate qualifications.
4. Includes Grades D - G only and GNVQ Foundation qualifications.
5. Includes GNVQ Intermediate and GNVQ Foundation qualifications.
6. Includes those who undertook no GCSE examinations or obtained no graded results but who obtained other qualifications such as RSA, Pitman, City and Guilds etc.
7. Includes only those with no qualifications of any kind.

NB The non-shaded rows sum to the total. Figures in the shaded rows overlap with other rows.

TABLE 2

HIGHEST QUALIFICATION OF SCHOOL LEAVERS BY SCHOOL TYPE⁽¹⁾

	2005/2006	
	Numbers	%
GRAMMAR		
A levels		
3 or more (or equivalent) ⁽²⁾	7432	75.5
2 (or equivalent) ⁽²⁾	413	4.2
1 ⁽²⁾	245	2.5
GCSEs		
5+ A*-C (or equivalent) ⁽³⁾	1390	14.1
1-4 A*-C (or equivalent) ⁽³⁾	303	3.1
Other grades (1+ D-G) ⁽⁴⁾	18	0.2
5+ A*-G (or equivalent) ⁽⁵⁾	1679	17.0
1-4 A*-G (or equivalent) ⁽⁵⁾	32	0.3
No GCSEs ⁽⁶⁾	48	0.5
No Formal Qualifications ⁽⁷⁾	48	0.5
TOTAL GRAMMAR	9849	100
SECONDARY		
A levels		
3 or more (or equivalent) ⁽²⁾	2727	17.4
2 (or equivalent) ⁽²⁾	841	5.4
1 ⁽²⁾	221	1.4
GCSEs		
5+ A*-C (or equivalent) ⁽³⁾	3125	19.9
1-4 A*-C (or equivalent) ⁽³⁾	4586	29.2
Other grades (1+ D-G) ⁽⁴⁾	3075	19.6
5+ A*-G (or equivalent) ⁽⁵⁾	8784	56.0
1-4 A*-G (or equivalent) ⁽⁵⁾	2001	12.8
No GCSEs ⁽⁶⁾	1104	7.0
No Formal Qualifications ⁽⁷⁾	769	4.9
TOTAL SECONDARY	15679	100
ALL		
A levels		
3 or more (or equivalent) ⁽²⁾	10159	39.8
2 (or equivalent) ⁽²⁾	1254	4.9
1 ⁽²⁾	466	1.8
GCSEs		
5+ A*-C (or equivalent) ⁽³⁾	4515	17.7
1-4 A*-C (or equivalent) ⁽³⁾	4889	19.2
Other grades (1+ D-G) ⁽⁴⁾	3093	12.1
5+ A*-G (or equivalent) ⁽⁵⁾	10463	41.0
1-4 A*-G (or equivalent) ⁽⁵⁾	2033	8.0
No GCSEs ⁽⁶⁾	1152	4.5
No Formal Qualifications ⁽⁷⁾	817	3.2
TOTAL LEAVERS	25528	100

NOTES

1. Excludes special and independent schools.
2. Includes AVCE qualifications.
3. Includes Grades A*-C only and GNVQ Intermediate qualifications.
4. Includes Grades D - G only and GNVQ Foundation qualifications.
5. Includes GNVQ Intermediate and GNVQ Foundation qualifications.
6. Includes those who undertook no GCSE examinations or obtained no graded results but who obtained other qualifications such as RSA, Pitman, City and Guilds etc.
7. Includes only those with no qualifications of any kind.

NB The non-shaded rows sum to the total. Figures in the shaded rows overlap with other rows.

TABLE 3

HIGHEST QUALIFICATION OF SCHOOL LEAVERS BY SEX AND SCHOOL TYPE⁽¹⁾

	2005/2006			
	BOYS		GIRLS	
	Numbers	%	Numbers	%
GRAMMAR				
A levels				
3 or more (or equivalent) ⁽²⁾	3296	68.2	4136	82.5
2 (or equivalent) ⁽²⁾	243	5.0	170	3.4
1 ⁽²⁾	142	2.9	103	2.1
GCSEs				
5+ A*-C (or equivalent) ⁽³⁾	873	18.1	517	10.3
1-4 A*-C (or equivalent) ⁽³⁾	232	4.8	71	1.4
Other grades (1+ D-G) ⁽⁴⁾	14	0.3	4	0.1
5+ A*-G (or equivalent) ⁽⁵⁾	1095	22.7	584	11.6
1-4 A*-G (or equivalent) ⁽⁵⁾	24	0.5	8	0.2
No GCSEs ⁽⁶⁾	33	0.7	15	0.3
No Formal Qualifications ⁽⁷⁾	33	0.7	15	0.3
TOTAL GRAMMAR	4833	100	5016	100
SECONDARY				
A levels				
3 or more (or equivalent) ⁽²⁾	953	11.6	1774	23.7
2 (or equivalent) ⁽²⁾	278	3.4	563	7.5
1 ⁽²⁾	87	1.1	134	1.8
GCSEs				
5+ A*-C (or equivalent) ⁽³⁾	1623	19.8	1502	20.1
1-4 A*-C (or equivalent) ⁽³⁾	2524	30.8	2062	27.6
Other grades (1+ D-G) ⁽⁴⁾	1972	24.0	1103	14.8
5+ A*-G (or equivalent) ⁽⁵⁾	4786	58.3	3998	53.5
1-4 A*-G (or equivalent) ⁽⁵⁾	1333	16.2	668	8.9
No GCSEs ⁽⁶⁾	767	9.3	337	4.5
No Formal Qualifications ⁽⁷⁾	523	6.4	246	3.3
TOTAL SECONDARY	8204	100	7475	100
ALL				
A levels				
3 or more (or equivalent) ⁽²⁾	4249	32.6	5910	47.3
2 (or equivalent) ⁽²⁾	521	4.0	733	5.9
1 ⁽²⁾	229	1.8	237	1.9
GCSEs				
5+ A*-C (or equivalent) ⁽³⁾	2496	19.1	2019	16.2
1-4 A*-C (or equivalent) ⁽³⁾	2756	21.1	2133	17.1
Other grades (1+ D-G) ⁽⁴⁾	1986	15.2	1107	8.9
5+ A*-G (or equivalent) ⁽⁵⁾	5881	45.1	4582	36.7
1-4 A*-G (or equivalent) ⁽⁵⁾	1357	10.4	676	5.4
No GCSEs ⁽⁶⁾	800	6.1	352	2.8
No Formal Qualifications ⁽⁷⁾	556	4.3	261	2.1
TOTAL LEAVERS	13037	100	12491	100

NOTES

1. Excludes special and independent schools.
2. Includes AVCE qualifications.
3. Includes Grades A*-C only and GNVQ Intermediate qualifications.
4. Includes Grades D - G only and GNVQ Foundation qualifications.
5. Includes GNVQ Intermediate and GNVQ Foundation qualifications.
6. Includes those who undertook no GCSE examinations or obtained no graded results but who obtained other qualifications such as RSA, Pitman, City and Guilds etc.
7. Includes only those with no qualifications of any kind.

NB The non-shaded rows sum to the total. Figures in the shaded rows overlap with other rows.

TABLE 4

HIGHEST QUALIFICATION OF SCHOOL LEAVERS BY SCHOOL TYPE AND MANAGEMENT TYPE⁽¹⁾

	2005/06			
	Schools Under Catholic Management		Schools Under Other Management	
	Numbers	%	Numbers	%
GRAMMAR				
A levels				
3 or more (or equivalent) ⁽²⁾	3337	77.9	4095	73.6
2 (or equivalent) ⁽²⁾	159	3.7	254	4.6
1 ⁽²⁾	108	2.5	137	2.5
GCSEs				
5+ A*-C (or equivalent) ⁽³⁾	522	12.2	868	15.6
1-4 A*-C (or equivalent) ⁽³⁾	127	3.0	176	3.2
Other grades (1+ D-G) ⁽⁴⁾	6	0.1	12	0.2
5+ A*-G (or equivalent) ⁽⁵⁾	644	15.0	1035	18.6
1-4 A*-G (or equivalent) ⁽⁵⁾	11	0.3	21	0.4
No GCSEs ⁽⁶⁾	24	0.6	24	0.4
No Formal Qualifications ⁽⁷⁾	24	0.6	24	0.4
TOTAL GRAMMAR	4283	100	5566	100
SECONDARY				
A levels				
3 or more (or equivalent) ⁽²⁾	1578	21.2	1149	13.9
2 (or equivalent) ⁽²⁾	475	6.4	366	4.4
1 ⁽²⁾	96	1.3	125	1.5
GCSEs				
5+ A*-C (or equivalent) ⁽³⁾	1382	18.6	1743	21.1
1-4 A*-C (or equivalent) ⁽³⁾	2016	27.1	2570	31.2
Other grades (1+ D-G) ⁽⁴⁾	1318	17.7	1757	21.3
5+ A*-G (or equivalent) ⁽⁵⁾	3794	51.0	4990	60.5
1-4 A*-G (or equivalent) ⁽⁵⁾	921	12.4	1080	13.1
No GCSEs ⁽⁶⁾	567	7.6	537	6.5
No Formal Qualifications ⁽⁷⁾	393	5.3	376	4.6
TOTAL SECONDARY	7432	100	8247	100
ALL				
A levels				
3 or more (or equivalent) ⁽²⁾	4915	42.0	5244	38.0
2 (or equivalent) ⁽²⁾	634	5.4	620	4.5
1 ⁽²⁾	204	1.7	262	1.9
GCSEs				
5+ A*-C (or equivalent) ⁽³⁾	1904	16.3	2611	18.9
1-4 A*-C (or equivalent) ⁽³⁾	2143	18.3	2746	19.9
Other grades (1+ D-G) ⁽⁴⁾	1324	11.3	1769	12.8
5+ A*-G (or equivalent) ⁽⁵⁾	4438	37.9	6025	43.6
1-4 A*-G (or equivalent) ⁽⁵⁾	932	8.0	1101	8.0
No GCSEs ⁽⁶⁾	591	5.0	561	4.1
No Formal Qualifications ⁽⁷⁾	417	3.6	400	2.9
TOTAL LEAVERS	11715	100	13813	100

NOTES

1. Excludes special and independent schools.
2. Includes AVCE qualifications.
3. Includes Grades A*-C only and GNVQ Intermediate qualifications.
4. Includes Grades D - G only and GNVQ Foundation qualifications.
5. Includes GNVQ Intermediate and GNVQ Foundation qualifications.
6. Includes those who undertook no GCSE examinations or obtained no graded results but who obtained other qualifications such as RSA, Pitman, City and Guilds etc.
7. Includes only those with no qualifications of any kind.

NB The non-shaded rows sum to the total. Figures in the shaded rows overlap with other rows.

TABLE 5

HIGHEST QUALIFICATION OF SCHOOL LEAVERS BY DESTINATIONS⁽¹⁾

	2005/2006											
	Institutions of Higher Education ⁽⁸⁾		Institutions of Further Education		Employment		Unemployment		Training ⁽⁹⁾		Unknown	
	Numbers	%	Numbers	%	Numbers	%	Numbers	%	Numbers	%	Numbers	%
A levels												
3+A levels (or equivalent) ⁽²⁾	8868	92.8	634	8.8	469	16.3	69	8.2	41	0.9	78	14.6
2 (or equivalent) ⁽²⁾	655	6.9	307	4.3	212	7.4	43	5.1	24	0.5	13	2.4
1 ⁽²⁾	32	0.3	237	3.3	121	4.2	31	3.7	27	0.6	18	3.4
GCSEs												
5+ A*-C (or equivalent) ⁽³⁾	0	0.0	2864	39.8	570	19.8	125	14.9	840	18.5	116	21.7
1-4 A*-C (or equivalent) ⁽³⁾	0	0.0	2195	30.5	629	21.9	183	21.8	1764	38.9	118	22.1
Other grades (1+ D-G) ⁽⁴⁾	0	0.0	783	10.9	609	21.2	205	24.4	1419	31.3	77	14.4
5+ A*-G (or equivalent) ⁽⁵⁾	0	0.0	5389	74.9	1362	47.4	351	41.7	3124	69.0	237	44.4
1-4 A*-G (or equivalent) ⁽⁵⁾	0	0.0	453	6.3	446	15.5	162	19.3	898	19.8	74	13.9
No GCSEs ⁽⁶⁾	0	0.0	172	2.4	266	9.2	185	22.0	415	9.2	114	21.3
No Formal Qualifications ⁽⁷⁾	0	0.0	129	1.8	203	7.1	152	18.1	247	5.5	86	16.1
TOTAL LEAVERS	9555	100	7192	100	2876	100	841	100	4530	100	534	100

NOTES

1. Excludes special and independent schools.
2. Includes AVCE qualifications.
3. Includes Grades A*-C only and GNVQ Intermediate qualifications.
4. Includes Grades D - G only and GNVQ Foundation qualifications.
5. Includes GNVQ Intermediate and GNVQ Foundation qualifications.
6. Includes those who undertook no GCSE examinations or obtained no graded results but who obtained other qualifications such as RSA, Pitman, City and Guilds etc.
7. Includes only those with no qualifications of any kind.
8. Includes universities and teacher training colleges.
9. Numbers entering training include those entering the Jobskills programme, operated by the Department for Employment and Learning. Training on Jobskills is delivered by a range of training providers, including Further Education Colleges. Jobskills trainees who receive training at Further Education Colleges are recorded as being in training and not in Further Education. This convention avoids double counting of Jobskills trainees.

NB The non-shaded rows sum to the total. Figures in the shaded rows overlap with other rows.

TABLE 6

HIGHEST QUALIFICATION OF SCHOOL LEAVERS BY SEX AND RELIGION OF PUPIL⁽¹⁾

	2005/2006					
	BOYS		GIRLS		TOTAL	
	Numbers	%	Numbers	%	Numbers	%
PROTESTANT						
A levels						
3 or more (or equivalent) ⁽³⁾	1647	29.8	2301	43.8	3948	36.6
2 (or equivalent) ⁽³⁾	213	3.9	251	4.8	464	4.3
1 ⁽³⁾	81	1.5	98	1.9	179	1.7
GCSEs						
5+ A*-C (or equivalent) ⁽⁴⁾	1134	20.5	967	18.4	2101	19.5
1-4 A*-C (or equivalent) ⁽⁴⁾	1239	22.4	969	18.5	2208	20.5
Other grades (1+ D-G) ⁽⁵⁾	918	16.6	517	9.8	1435	13.3
5+ A*-G (or equivalent) ⁽⁶⁾	2713	49.1	2153	41.0	4866	45.2
1-4 A*-G (or equivalent) ⁽⁶⁾	578	10.5	300	5.7	878	8.2
No GCSEs ⁽⁷⁾	291	5.3	147	2.8	438	4.1
No Formal Qualifications ⁽⁸⁾	196	3.5	113	2.2	309	2.9
TOTAL PROTESTANT	5523	100	5250	100	10773	100
CATHOLIC						
A levels						
3 or more (or equivalent) ⁽³⁾	2213	33.9	3169	50.0	5382	41.8
2 (or equivalent) ⁽³⁾	265	4.1	441	7.0	706	5.5
1 ⁽³⁾	126	1.9	116	1.8	242	1.9
GCSEs						
5+ A*-C (or equivalent) ⁽⁴⁾	1183	18.1	905	14.3	2088	16.2
1-4 A*-C (or equivalent) ⁽⁴⁾	1344	20.6	1020	16.1	2364	18.4
Other grades (1+ D-G) ⁽⁵⁾	946	14.5	514	8.1	1460	11.3
5+ A*-G (or equivalent) ⁽⁶⁾	2770	42.4	2117	33.4	4887	38.0
1-4 A*-G (or equivalent) ⁽⁶⁾	703	10.8	321	5.1	1024	8.0
No GCSEs ⁽⁷⁾	460	7.0	167	2.6	627	4.9
No Formal Qualifications ⁽⁸⁾	326	5.0	122	1.9	448	3.5
TOTAL CATHOLIC	6537	100	6332	100	12869	100
OTHER ⁽²⁾						
A levels						
3 or more (or equivalent) ⁽³⁾	389	39.8	440	48.4	829	44.0
2 (or equivalent) ⁽³⁾	43	4.4	41	4.5	84	4.5
1 ⁽³⁾	22	2.3	23	2.5	45	2.4
GCSEs						
5+ A*-C (or equivalent) ⁽⁴⁾	179	18.3	147	16.2	326	17.3
1-4 A*-C (or equivalent) ⁽⁴⁾	173	17.7	144	15.8	317	16.8
Other grades (1+ D-G) ⁽⁵⁾	122	12.5	76	8.4	198	10.5
5+ A*-G (or equivalent) ⁽⁶⁾	398	40.7	312	34.3	710	37.6
1-4 A*-G (or equivalent) ⁽⁶⁾	76	7.8	55	6.1	131	6.9
No GCSEs ⁽⁷⁾	49	5.0	38	4.2	87	4.6
No Formal Qualifications ⁽⁸⁾	34	3.5	26	2.9	60	3.2
TOTAL OTHER	977	100	909	100	1886	100

NOTES

1. Excludes special and independent schools.
2. Other includes Other Christian, No religion and Non Christian.
3. Includes AVCE qualifications.
4. Includes Grades A*-C only and GNVQ Intermediate qualifications.
5. Includes Grades D - G only and GNVQ Foundation qualifications.
6. Includes GNVQ Intermediate and GNVQ Foundation qualifications.
7. Includes those who undertook no GCSE examinations or obtained no graded results but who obtained other qualifications such as RSA, Pitman, City and Guilds etc.
8. Includes only those with no qualifications of any kind.

NB The non-shaded rows sum to the total. Figures in the shaded rows overlap with other rows.

TABLE 7

HIGHEST QUALIFICATION OF SCHOOL LEAVERS BY ETHNIC ORIGIN⁽¹⁾

	2005/2006	
	TOTAL	
	Numbers	%
WHITE⁽²⁾		
A levels		
3 or more (or equivalent) ⁽³⁾	10039	39.8
2 (or equivalent) ⁽³⁾	1236	4.9
1 ⁽³⁾	458	1.8
GCSEs		
5+ A*-C (or equivalent) ⁽⁴⁾	4472	17.7
1-4 A*-C (or equivalent) ⁽⁴⁾	4845	19.2
Other grades (1+ D-G) ⁽⁵⁾	3067	12.1
5+ A*-G (or equivalent) ⁽⁶⁾	10375	41.1
1-4 A*-G (or equivalent) ⁽⁶⁾	2008	8.0
No GCSEs ⁽⁷⁾	1129	4.5
No Formal Qualifications ⁽⁸⁾	795	3.1
TOTAL WHITE	25246	100
MINORITY ETHNIC GROUPS⁽²⁾		
A levels		
3 or more (or equivalent) ⁽³⁾	120	42.6
2 (or equivalent) ⁽³⁾	18	6.4
1 ⁽³⁾	8	2.8
GCSEs		
5+ A*-C (or equivalent) ⁽⁴⁾	43	15.2
1-4 A*-C (or equivalent) ⁽⁴⁾	44	15.6
Other grades (1+ D-G) ⁽⁵⁾	26	9.2
5+ A*-G (or equivalent) ⁽⁶⁾	88	31.2
1-4 A*-G (or equivalent) ⁽⁶⁾	25	8.9
No GCSEs ⁽⁷⁾	23	8.2
No Formal Qualifications ⁽⁸⁾	22	7.8
TOTAL MINORITY ETHNIC GROUPS	282	100

NOTES

1. Excludes special and independent schools.
2. 'Minority Ethnic Groups' includes Irish Travellers. The 'White' figures do not include Irish Travellers.
3. Includes AVCE qualifications.
4. Includes Grades A*-C only and GNVQ Intermediate qualifications.
5. Includes Grades D - G only and GNVQ Foundation qualifications.
6. Includes GNVQ Intermediate and GNVQ Foundation qualifications.
7. Includes those who undertook no GCSE examinations or obtained no graded results but who obtained other qualifications such as RSA, Pitman, City and Guilds etc.
8. Includes only those with no qualifications of any kind.

NB The non-shaded rows sum to the total. Figures in the shaded rows overlap with other rows. In addition there were 24 pupils for whom an Ethnic group was not given.

TABLE 8

HIGHEST QUALIFICATION OF SCHOOL LEAVERS BY SEX AND FREE SCHOOL MEAL ENTITLEMENT⁽¹⁾

	2005/2006					
	BOYS		GIRLS		TOTAL	
	Numbers	%	Numbers	%	Numbers	%
ENTITLED TO FSM						
A levels						
3 or more (or equivalent) ⁽²⁾	324	13.5	529	23.0	853	18.1
2 (or equivalent) ⁽²⁾	61	2.5	118	5.1	179	3.8
1 ⁽²⁾	28	1.2	26	1.1	54	1.1
GCSEs						
5+ A*-C (or equivalent) ⁽³⁾	351	14.6	335	14.5	686	14.6
1-4 A*-C (or equivalent) ⁽³⁾	618	25.7	642	27.9	1260	26.7
Other grades (1+ D-G) ⁽⁴⁾	660	27.4	492	21.3	1152	24.4
5+ A*-G (or equivalent) ⁽⁵⁾	1128	46.9	1154	50.1	2282	48.4
1-4 A*-G (or equivalent) ⁽⁵⁾	501	20.8	315	13.7	816	17.3
No GCSEs ⁽⁶⁾	365	15.2	163	7.1	528	11.2
No Formal Qualifications ⁽⁷⁾	230	9.6	116	5.0	346	7.3
TOTAL ENTITLED TO FSM	2407	100	2305	100	4712	100
NOT ENTITLED TO FSM						
A levels						
3 or more (or equivalent) ⁽²⁾	3925	36.9	5381	52.8	9306	44.7
2 (or equivalent) ⁽²⁾	460	4.3	615	6.0	1075	5.2
1 ⁽²⁾	201	1.9	211	2.1	412	2.0
GCSEs						
5+ A*-C (or equivalent) ⁽³⁾	2145	20.2	1684	16.5	3829	18.4
1-4 A*-C (or equivalent) ⁽³⁾	2138	20.1	1491	14.6	3629	17.4
Other grades (1+ D-G) ⁽⁴⁾	1326	12.5	615	6.0	1941	9.3
5+ A*-G (or equivalent) ⁽⁵⁾	4753	44.7	3428	33.7	8181	39.3
1-4 A*-G (or equivalent) ⁽⁵⁾	856	8.1	361	3.5	1217	5.8
No GCSEs ⁽⁶⁾	435	4.1	189	1.9	624	3.0
No Formal Qualifications ⁽⁷⁾	326	3.1	145	1.4	471	2.3
TOTAL NOT ENTITLED TO FSM	10630	100	10186	100	20816	100

NOTES

1. Excludes special and independent schools
2. Includes AVCE qualifications.
3. Includes Grades A*-C only and GNVQ Intermediate qualifications.
4. Includes Grades D - G only and GNVQ Foundation qualifications.
5. Includes GNVQ Intermediate and GNVQ Foundation qualifications.
6. Includes those who undertook no GCSE examinations or obtained no graded results but who obtained other qualifications such as RSA, Pitman, City and Guilds etc.
7. Includes only those with no qualifications of any kind.

NB The non-shaded rows sum to the total. Figures in the shaded rows overlap with other rows.

TABLE 9

DESTINATIONS OF SCHOOL LEAVERS BY SEX^{(1) (2)}

	2005/06	
	Numbers	%
BOYS		
Institutions of Higher Education ⁽³⁾	4027	30.9
Institutions of Further Education – Higher Education Courses	85	0.7
Institutions of Further Education – Other Courses	3243	24.9
Employment	1781	13.7
Unemployment	429	3.3
Training ⁽⁴⁾	3193	24.5
Unknown Destinations	279	2.1
TOTAL BOYS	13037	100
GIRLS		
Institutions of Higher Education ⁽³⁾	5528	44.3
Institutions of Further Education – Higher Education Courses	111	0.9
Institutions of Further Education – Other Courses	3753	30.0
Employment	1095	8.8
Unemployment	412	3.3
Training ⁽⁴⁾	1337	10.7
Unknown Destinations	255	2.0
TOTAL GIRLS	12491	100
ALL		
Institutions of Higher Education ⁽³⁾	9555	37.4
Institutions of Further Education – Higher Education Courses	196	0.8
Institutions of Further Education – Other Courses	6996	27.4
Employment	2876	11.3
Unemployment	841	3.3
Training ⁽⁴⁾	4530	17.7
Unknown Destinations	534	2.1
TOTAL LEAVERS	25528	100

NOTES

1. Excludes special and independent schools.
2. Destination is defined by Institution. Institutions may provide courses at both Further and Higher Education levels.
3. Includes universities and teacher training colleges.
4. Numbers entering training include those entering the Jobskills programme, operated by the Department for Employment and Learning. Training on Jobskills is delivered by a range of training providers, including Further Education Colleges. Jobskills trainees who receive training at Further Education Colleges are recorded as being in training and not in Further Education. This convention avoids double counting of Jobskills trainees.

TABLE 10

DESTINATIONS OF SCHOOL LEAVERS BY SCHOOL TYPE^{(1) (2)}

	2005/06	
	Numbers	%
GRAMMAR		
Institutions of Higher Education ⁽³⁾	6993	71.0
Institutions of Further Education – Higher Education Courses	62	0.6
Institutions of Further Education – Other Courses	1736	17.6
Employment	471	4.8
Unemployment	95	1.0
Training ⁽⁴⁾	343	3.5
Destinations Unknown	149	1.5
TOTAL GRAMMAR	9849	100
SECONDARY		
Institutions of Higher Education ⁽³⁾	2562	16.3
Institutions of Further Education – Higher Education Courses	134	0.9
Institutions of Further Education – Other Courses	5260	33.5
Employment	2405	15.3
Unemployment	746	4.8
Training ⁽⁴⁾	4187	26.7
Destinations Unknown	385	2.5
TOTAL SECONDARY	15679	100
ALL		
Institutions of Higher Education ⁽³⁾	9555	37.4
Institutions of Further Education – Higher Education Courses	196	0.8
Institutions of Further Education – Other Courses	6996	27.4
Employment	2876	11.3
Unemployment	841	3.3
Training ⁽⁴⁾	4530	17.7
Destinations Unknown	534	2.1
TOTAL LEAVERS	25528	100

NOTES

1. Excludes special and independent schools.
2. Destination is defined by Institution. Institutions may provide courses at both Further and Higher Education levels.
3. Includes universities and teacher training colleges.
4. Numbers entering training include those entering the Jobskills programme, operated by the Department for Employment and Learning. Training on Jobskills is delivered by a range of training providers, including Further Education Colleges. Jobskills trainees who receive training at Further Education Colleges are recorded as being in training and not in Further Education. This convention avoids double counting of Jobskills trainees.

TABLE 11

DESTINATIONS OF SCHOOL LEAVERS BY SEX AND SCHOOL TYPE^{(1) (2)}

	2005/06			
	BOYS		GIRLS	
	Numbers	%	Numbers	%
GRAMMAR				
Institutions of Higher Education ⁽³⁾	3126	64.7	3867	77.1
Institutions of Further Education – Higher Education Courses	33	0.7	29	0.6
Institutions of Further Education – Other Courses	957	19.8	779	15.5
Employment	288	6.0	183	3.6
Unemployment	44	0.9	51	1.0
Training ⁽⁴⁾	296	6.1	47	0.9
Destinations Unknown	89	1.8	60	1.2
TOTAL GRAMMAR	4833	100	5016	100
SECONDARY				
Institutions of Higher Education ⁽³⁾	901	11.0	1661	22.2
Institutions of Further Education – Higher Education Courses	52	0.6	82	1.1
Institutions of Further Education – Other Courses	2286	27.9	2974	39.8
Employment	1493	18.2	912	12.2
Unemployment	385	4.7	361	4.8
Training ⁽⁴⁾	2897	35.3	1290	17.3
Destinations Unknown	190	2.3	195	2.6
TOTAL SECONDARY	8204	100	7475	100
ALL				
Institutions of Higher Education ⁽³⁾	4027	30.9	5528	44.3
Institutions of Further Education – Higher Education Courses	85	0.7	111	0.9
Institutions of Further Education – Other Courses	3243	24.9	3753	30.0
Employment	1781	13.7	1095	8.8
Unemployment	429	3.3	412	3.3
Training ⁽⁴⁾	3193	24.5	1337	10.7
Destinations Unknown	279	2.1	255	2.0
TOTAL LEAVERS	13037	100	12491	100

NOTES

1. Excludes special and independent schools.
2. Destination is defined by Institution. Institutions may provide courses at both Further and Higher Education levels.
3. Includes universities and teacher training colleges.
4. Numbers entering training include those entering the Jobskills programme, operated by the Department for Employment and Learning. Training on Jobskills is delivered by a range of training providers, including Further Education Colleges. Jobskills trainees who receive training at Further Education Colleges are recorded as being in training and not in Further Education. This convention avoids double counting of Jobskills trainees.

TABLE 12

DESTINATIONS OF SCHOOL LEAVERS BY SCHOOL TYPE AND MANAGEMENT TYPE⁽¹⁾⁽²⁾

	2005/06			
	Schools Under Catholic Management		Schools Under Other Management	
	Numbers	%	Numbers	%
GRAMMAR				
Institutions of Higher Education ⁽³⁾	3192	74.5	3801	68.3
Institutions of Further Education – Higher Education Courses	16	0.4	46	0.8
Institutions of Further Education – Other Courses	613	14.3	1123	20.2
Employment	160	3.7	311	5.6
Unemployment	32	0.7	63	1.1
Training ⁽⁴⁾	205	4.8	138	2.5
Destinations Unknown	65	1.5	84	1.5
TOTAL GRAMMAR	4283	100	5566	100
SECONDARY				
Institutions of Higher Education ⁽³⁾	1515	20.4	1047	12.7
Institutions of Further Education – Higher Education Courses	83	1.1	51	0.6
Institutions of Further Education – Other Courses	2058	27.7	3202	38.8
Employment	1219	16.4	1186	14.4
Unemployment	356	4.8	390	4.7
Training ⁽⁴⁾	2063	27.8	2124	25.8
Destinations Unknown	138	1.9	247	3.0
TOTAL SECONDARY	7432	100	8247	100
ALL				
Institutions of Higher Education ⁽³⁾	4707	40.2	4848	35.1
Institutions of Further Education – Higher Education Courses	99	0.8	97	0.7
Institutions of Further Education – Other Courses	2671	22.8	4325	31.3
Employment	1379	11.8	1497	10.8
Unemployment	388	3.3	453	3.3
Training ⁽⁴⁾	2268	19.4	2262	16.4
Destinations Unknown	203	1.7	331	2.4
TOTAL LEAVERS	11715	100	13813	100

NOTES

1. Excludes special and independent schools.
2. Destination is defined by Institution. Institutions may provide courses at both Further and Higher Education levels.
3. Includes universities and teacher training colleges.
4. Numbers entering training include those entering the Jobskills programme, operated by the Department for Employment and Learning. Training on Jobskills is delivered by a range of training providers, including Further Education Colleges. Jobskills trainees who receive training at Further Education Colleges are recorded as being in training and not in Further Education. This convention avoids double counting of Jobskills trainees.

TABLE 13

DESTINATION OF SCHOOL LEAVERS BY HIGHEST QUALIFICATION^{(1) (2)}

	2005/06								
	A LEVELS (or equivalent)		GCSEs (or equivalent)						NO FORMAL QUALIFICATIONS ⁽⁸⁾
	2+ ⁽³⁾	1 ⁽³⁾	5+ A*-C ⁽⁴⁾	1-4 A*-C ⁽⁴⁾	OTHER GRADES (1+ D-G) ⁽⁵⁾	5+ A* - G ⁽⁶⁾	1 - 4 A* - G ⁽⁶⁾	NO GCSEs ⁽⁷⁾	
%	%	%	%	%	%	%	%	%	
DESTINATION									
Institutions of Higher Education ⁽⁹⁾	83.4	6.9	0.0	0.0	0.0	0.0	0.0	0.0	0.0
Institutions of Further Education - Higher Education Courses	1.7	0.2	0.0	0.0	0.0	0.0	0.0	0.0	0.0
Institutions of Further Education - Other Courses	6.6	50.6	63.3	44.9	25.3	51.5	22.3	14.9	15.8
Employment	6.0	26.0	12.6	12.9	19.7	13.0	21.9	23.1	24.8
Unemployment	1.0	6.7	2.8	3.7	6.6	3.4	8.0	16.1	18.6
Training ⁽¹⁰⁾	0.6	5.8	18.6	36.1	45.9	29.9	44.2	36.0	30.2
Unknown Destinations	0.8	3.9	2.6	2.4	2.5	2.3	3.6	9.9	10.5
TOTAL LEAVERS	11413	466	4515	4889	3093	10463	2033	1152	817

NOTES

1. Excludes special and independent schools.
2. Destination is defined by Institution. Institutions may provide courses at both Further and Higher Education.
3. Includes AVCE qualifications.
4. Includes GCSEs Grades A*-C only and GNVQ Intermediate qualifications.
5. Includes Grades D - G only and GNVQ Foundations qualifications.
6. Includes GNVQ Intermediate and GNVQ Foundation qualifications.
7. Includes those who undertook no GCSEs or obtained no graded results but who obtained other qualifications such as RSA, Pitman, City and Guilds etc.
8. Includes only those with no qualifications of any kind.
9. Includes universities and teacher training colleges.
10. Numbers entering training include those entering the Jobskills programme, operated by the Department for Employment and Learning. Training on Jobskills is delivered by a range of training providers, including Further Education Colleges. Jobskills trainees who receive training at Further Education Colleges are recorded as being in training and not in Further Education. This convention avoids double counting of Jobskills trainees.

NB The totals in the non-shaded columns sum to the grand total. The totals in the shaded columns overlap with other columns in the table.

TABLE 14

DESTINATION OF SCHOOL LEAVERS BY SEX AND RELIGION OF PUPIL⁽¹⁾⁽²⁾

	2005/2006					
	BOYS		GIRLS		TOTAL	
	Numbers	%	Numbers	%	Numbers	%
PROTESTANT						
Institutions of Higher Education ⁽⁴⁾	1516	27.4	2101	40.0	3617	33.6
Institutions of Further Education	1655	30.0	1813	34.5	3468	32.2
Employment	747	13.5	451	8.6	1198	11.1
Unemployment	184	3.3	166	3.2	350	3.2
Training ⁽⁵⁾	1288	23.3	602	11.5	1890	17.5
Destinations Unknown	133	2.4	117	2.2	250	2.3
TOTAL PROTESTANT	5523	100	5250	100	10773	100
CATHOLIC						
Institutions of Higher Education ⁽⁴⁾	2140	32.7	3025	47.8	5165	40.1
Institutions of Further Education	1383	21.2	1751	27.7	3134	24.4
Employment	921	14.1	568	9.0	1489	11.6
Unemployment	208	3.2	215	3.4	423	3.3
Training ⁽⁵⁾	1767	27.0	657	10.4	2424	18.8
Destinations Unknown	118	1.8	116	1.8	234	1.8
TOTAL CATHOLIC	6537	100	6332	100	12869	100
Other⁽³⁾						
Institutions of Higher Education ⁽⁴⁾	371	38.0	402	44.2	773	41.0
Institutions of Further Education	290	29.7	300	33.0	590	31.3
Employment	113	11.6	76	8.4	189	10.0
Unemployment	37	3.8	31	3.4	68	3.6
Training ⁽⁵⁾	138	14.1	78	8.6	216	11.5
Destinations Unknown	28	2.9	22	2.4	50	2.7
TOTAL OTHER	977	100	909	100	1886	100

NOTES

1. Excludes special and independent schools.
2. Destination is defined by Institution. Institution may provide courses at both Further and Higher Education Levels.
3. Other includes Other Christian, No religion and Non Christian.
4. Includes universities and teacher training colleges.
5. Numbers entering training include those entering the Jobskills programme, operated by the Department for Employment and Learning. Training on Jobskills is delivered by a range of training providers, including Further Education Colleges. Jobskills trainees who receive training at Further Education Colleges are recorded as being in training and not in Further Education. This convention avoids double counting of Jobskills trainees.

TABLE 15

DESTINATION OF SCHOOL LEAVERS BY ETHNIC ORIGIN⁽¹⁾⁽²⁾

	2005/2006	
	Total	
	Numbers	%
WHITE⁽³⁾		
Institutions of Higher Education ⁽⁴⁾	9441	37.4
Institutions of Further Education	7105	28.1
Employment	2845	11.3
Unemployment	828	3.3
Training ⁽⁵⁾	4506	17.8
Destinations Unknown	521	2.1
TOTAL WHITE	25246	100
MINORITY ETHNIC GROUPS⁽³⁾		
Institutions of Higher Education ⁽⁴⁾	114	40.4
Institutions of Further Education	87	30.9
Employment	31	11.0
Unemployment	13	4.6
Training ⁽⁵⁾	24	8.5
Destinations Unknown	13	4.6
TOTAL MINORITY ETHNIC GROUPS	282	100

NOTES

1. Excludes special and independent schools.
2. Destination is defined by Institution. Institution may provide courses at both Further and Higher Education Levels
3. 'Minority Ethnic Groups' includes Irish Travellers. The 'White' figures do not include Irish Travellers.
4. Includes universities and teacher training colleges.
5. Numbers entering training include those entering the Jobskills programme, operated by the Department for Employment and Learning. Training on Jobskills is delivered by a range of training providers, including Further Education Colleges. Jobskills trainees who receive training at Further Education Colleges are recorded as being in training and not in Further Education. This convention avoids double counting of Jobskills trainees.

NB In addition there were 24 pupils for whom Ethnic origin was not given.

TABLE 16

DESTINATION OF SCHOOL LEAVERS BY FREE SCHOOL MEAL ENTITLEMENT AND SEX OF PUPIL^{(1) (2)}

	2005/2006					
	BOYS		GIRLS		TOTAL	
	Numbers	%	Numbers	%	Numbers	%
ENTITLED TO FSM						
Institutions of Higher Education ⁽³⁾	301	12.5	476	20.7	777	16.5
Institutions of Further Education – Higher Education Courses	11	0.5	12	0.5	23	0.5
Institutions of Further Education – Other Courses	563	23.4	825	35.8	1388	29.5
Employment	430	17.9	272	11.8	702	14.9
Unemployment	157	6.5	158	6.9	315	6.7
Training ⁽⁴⁾	870	36.1	484	21.0	1354	28.7
Destinations Unknown	75	3.1	78	3.4	153	3.2
TOTAL ENTITLED TO FSM	2407	100	2305	100	4712	100
NOT ENTITLED TO FSM						
Institutions of Higher Education ⁽³⁾	3726	35.1	5052	49.6	8778	42.2
Institutions of Further Education – Higher Education Courses	74	0.7	99	1.0	173	0.8
Institutions of Further Education – Other Courses	2680	25.2	2928	28.7	5608	26.9
Employment	1351	12.7	823	8.1	2174	10.4
Unemployment	272	2.6	254	2.5	526	2.5
Training ⁽⁴⁾	2323	21.9	853	8.4	3176	15.3
Destinations Unknown	204	1.9	177	1.7	381	1.8
TOTAL NOT ENTITLED TO FSM	10630	100	10186	100	20816	100

NOTES

1. Excludes special and independent schools.
2. Destination is defined by Institution. Institution may provide courses at both Further and Higher Education Levels
3. Includes universities and teacher training colleges.
4. Numbers entering training include those entering the Jobskills programme, operated by the Department for Employment and Learning. Training on Jobskills is delivered by a range of training providers, including Further Education Colleges. Jobskills trainees who receive training at Further Education Colleges are recorded as being in training and not in Further Education. This convention avoids double counting of Jobskills trainees

APPENDIX TABLE A
HIGHEST QUALIFICATION OF SCHOOL LEAVERS BY SEX AND SCHOOL TYPE⁽¹⁾

	2000/2001			
	BOYS		GIRLS	
	Numbers	%	Numbers	%
GRAMMAR				
A levels				
3 or more (or equivalent) ⁽²⁾	2798	59.7	3504	71.3
2 (or equivalent) ⁽²⁾	487	10.4	503	10.2
1	145	3.1	115	2.3
GCSEs				
5+ A*-C (or equivalent) ⁽³⁾	959	20.5	675	13.7
1-4 A*-C (or equivalent) ⁽³⁾	238	5.1	80	1.6
Other grades (1+ D-G) ⁽⁴⁾	18	0.4	3	0.1
5+ A*-G (or equivalent) ⁽⁵⁾	1196	25.5	747	15.2
1-4 A*-G (or equivalent) ⁽⁵⁾	19	0.4	11	0.2
No GCSEs ⁽⁶⁾	41	0.9	35	0.7
No Formal Qualifications ⁽⁷⁾	41	0.9	34	0.7
TOTAL GRAMMAR	4686	100	4915	100
SECONDARY				
A levels				
3 or more (or equivalent) ⁽²⁾	301	3.7	684	9.2
2 (or equivalent) ⁽²⁾	330	4.1	798	10.7
1	52	0.6	112	1.5
GCSEs				
5+ A*-C (or equivalent) ⁽³⁾	1398	17.2	1730	23.3
1-4 A*-C (or equivalent) ⁽³⁾	2666	32.8	2221	29.9
Other grades (1+ D-G) ⁽⁴⁾	2426	29.8	1457	19.6
5+ A*-G (or equivalent) ⁽⁵⁾	5110	62.8	4640	62.5
1-4 A*-G (or equivalent) ⁽⁵⁾	1380	17.0	768	10.3
No GCSEs ⁽⁶⁾	962	11.8	424	5.7
No Formal Qualifications ⁽⁷⁾	778	9.6	367	4.9
TOTAL SECONDARY	8135	100	7426	100
ALL				
A levels				
3 or more (or equivalent) ⁽²⁾	3099	24.2	4188	33.9
2 (or equivalent) ⁽²⁾	817	6.4	1301	10.5
1	197	1.5	227	1.8
GCSEs				
5+ A*-C (or equivalent) ⁽³⁾	2357	18.4	2405	19.5
1-4 A*-C (or equivalent) ⁽³⁾	2904	22.7	2301	18.6
Other grades (1+ D-G) ⁽⁴⁾	2444	19.1	1460	11.8
5+ A*-G (or equivalent) ⁽⁵⁾	6306	49.2	5387	43.7
1-4 A*-G (or equivalent) ⁽⁵⁾	1399	10.9	779	6.3
No GCSEs ⁽⁶⁾	1003	7.8	459	3.7
No Formal Qualifications ⁽⁷⁾	820	6.4	401	3.2
TOTAL LEAVERS	12821	100	12341	100

NOTES

1. Excludes special and independent schools.
 2. Includes GNVQ Advanced qualifications.
 3. Includes Grades A*-C only and GNVQ Intermediate qualifications.
 4. Includes Grades D - G only and GNVQ Foundation qualifications.
 5. Includes GNVQ Intermediate and GNVQ Foundation qualifications.
 6. Includes those who undertook no GCSE examinations or obtained no graded results but who obtained other qualifications such as RSA, Pitman, City and Guilds etc.
 7. Includes only those with no qualifications of any kind.
- NB** The non-shaded rows sum to the total. Figures in the shaded rows overlap with other rows.

TABLE B

HIGHEST QUALIFICATION OF SCHOOL LEAVERS BY SCHOOL TYPE AND MANAGEMENT TYPE⁽¹⁾

	2000/2001			
	Schools Under Catholic Management		Schools Under Other Management	
	Numbers	%	Numbers	%
GRAMMAR				
A levels				
3 or more (or equivalent) ⁽²⁾	2843	66.3	3459	65.1
2 (or equivalent) ⁽²⁾	463	10.8	527	9.9
1	104	2.4	156	2.9
GCSEs				
5+ A*-C (or equivalent) ⁽³⁾	688	16.0	946	17.8
1-4 A*-C (or equivalent) ⁽³⁾	147	3.4	171	3.2
Other grades (1+ D-G) ⁽⁴⁾	8	0.2	13	0.2
5+ A*-G (or equivalent) ⁽⁵⁾	829	19.3	1114	21.0
1-4 A*-G (or equivalent) ⁽⁵⁾	14	0.3	16	0.3
No GCSEs ⁽⁶⁾	35	0.8	41	0.8
No Formal Qualifications ⁽⁷⁾	35	0.8	40	0.8
TOTAL GRAMMAR	4288	100	5313	100
SECONDARY				
A levels				
3 or more (or equivalent) ⁽²⁾	678	8.8	307	3.9
2 (or equivalent) ⁽²⁾	636	8.3	492	6.2
1	97	1.3	67	0.9
GCSEs				
5+ A*-C (or equivalent) ⁽³⁾	1423	18.5	1705	21.7
1-4 A*-C (or equivalent) ⁽³⁾	2276	29.6	2611	33.2
Other grades (1+ D-G) ⁽⁴⁾	1810	23.5	2073	26.3
5+ A*-G (or equivalent) ⁽⁵⁾	4418	57.5	5332	67.7
1-4 A*-G (or equivalent) ⁽⁵⁾	1091	14.2	1057	13.4
No GCSEs ⁽⁶⁾	767	10.0	619	7.9
No Formal Qualifications ⁽⁷⁾	622	8.1	523	6.6
TOTAL SECONDARY	7687	100	7874	100
TOTAL				
A levels				
3 or more (or equivalent) ⁽²⁾	3521	29.4	3766	28.6
2 (or equivalent) ⁽²⁾	1099	9.2	1019	7.7
1	201	1.7	223	1.7
GCSEs				
5+ A*-C (or equivalent) ⁽³⁾	2111	17.6	2651	20.1
1-4 A*-C (or equivalent) ⁽³⁾	2423	20.2	2782	21.1
Other grades (1+ D-G) ⁽⁴⁾	1818	15.2	2086	15.8
5+ A*-G (or equivalent) ⁽⁵⁾	5247	43.8	6446	48.9
1-4 A*-G (or equivalent) ⁽⁵⁾	1105	9.2	1073	8.1
No GCSEs ⁽⁶⁾	802	6.7	660	5.0
No Formal Qualifications ⁽⁷⁾	657	5.5	563	4.3
TOTAL LEAVERS	11975	100	13187	100

NOTES

1. Excludes special and independent schools.
2. Includes GNVQ Advanced qualifications.
3. Includes Grades A*-C only and GNVQ Intermediate qualifications.
4. Includes Grades D - G only and GNVQ Foundation qualifications.
5. Includes GNVQ Intermediate and GNVQ Foundation qualifications.
6. Includes those who undertook no GCSE examinations or obtained no graded results but who obtained other qualifications such as RSA, Pitman, City and Guilds etc.
7. Includes only those with no qualifications of any kind.

NB The non-shaded rows sum to the total. Figures in the shaded rows overlap with other rows