

## Statistical Press Release

9 June 2011

### Coverage

Northern Ireland

### Theme

Children, Education and Skills

### Issued by

Statistics & Research Branch  
Department of Education  
Rathgael House  
Balloo Road  
Rathgill  
BANGOR BT19 7PR

### Telephone

Press Office:  
028 9127 9701  
Statistics & Research Branch:  
028 9127 9638

### Statistician

Jennifer McCrea

### Email

[statistics@deni.gov.uk](mailto:statistics@deni.gov.uk)

### Internet

[http://www.deni.gov.uk/index/  
32-statisticsandresearch\\_pg.htm](http://www.deni.gov.uk/index/32-statisticsandresearch_pg.htm)

## TEACHER WORKFORCE STATISTICS AND PUPIL: TEACHER RATIOS IN GRANT AIDED SCHOOLS IN NORTHERN IRELAND 2010/11

The purpose of this statistical release is to provide analysis of the latest annual data collections relating to teacher numbers, teacher vacancies and pupil: teacher ratios in grant-aided schools in Northern Ireland in 2010/11. This information is analysed by Education and Library Board, school type and teacher characteristics for example gender, age or full-time/part-time working.

The information collected throughout this process is used by policy branches within the Department of Education to inform policy. The data is also used to respond to Assembly questions.

### Key Points

- The number of full-time equivalent (FTE) teachers is 19,037.6. This represents an increase of 40.7 from 18,996.9 in 2009/10 (Figure 1).
- The teacher headcount is 20,138, an increase of 62 teachers from 20,076, in 2009/10 (Figure 2).
- 75.3% of all teachers are female and 24.7% are male, compared to 74.9% of females and 25.1% of males in 2009/10. In the nursery, primary and preparatory sectors, taken together, 15.0% of teachers are male, while in the secondary (non-grammar) and grammar sectors, 33.5% of teachers are male (Figure 3).
- The median age of teachers is 40.5 years, an increase from 40.3 years in 2009/10. 2,947 teachers (14.6%) are aged under 30 and 390 (1.9%) are aged 60 years or above (Figure 4).

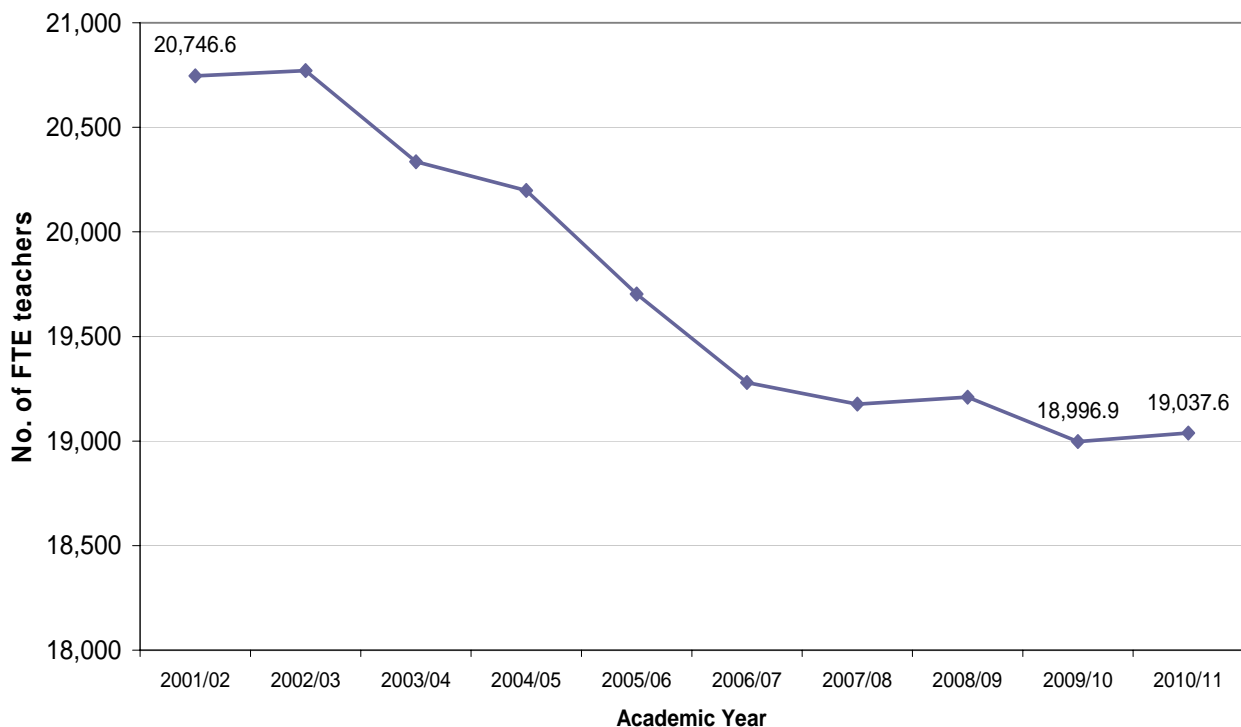
- In November 2010, schools had more unfilled vacancies than the year previous. There were 989 teacher vacancies at the end of the academic year 2009/10, 801 (81.0%) of which had been filled by November 2010 (Figure 5). This compares with 1,044 (85.8%) of 1,217 vacancies filled the year previous.
- The overall Pupil: Teacher Ratio (PTR) in 2010/11 is 16.8, the same as in 2009/10 (see Figure 6).
- The PTRs for nursery and primary schools have each decreased by 0.2 since 2009/10. The PTR for secondary (non-grammar) schools has decreased by 0.1 and the preparatory departments of grammar schools has decreased by 1.0 since 2009/10. The PTR for grammar schools has increased by 0.2, and the PTR for special schools has increased by 0.1 (Figure 7).

Information in this Press Release relates to teacher numbers, teacher vacancies and Pupil: Teacher Ratios. All **figures** referred to are included in the main body of the text. All **tables** are included as annexes.

## **1. Full-time equivalent teacher numbers**

- 1.1 **Figure 1** shows the number of full-time equivalent (FTE) teachers for each of the past ten years. While the number of FTE teachers has increased this year by 40.7, compared to a decrease of 212.9 in 2009/10, the number of FTE teachers has seen a decrease of 1,709 over the past ten years. This information is broken down by Education and Library Board, school type, and school management type in **Tables 1 and 2**.

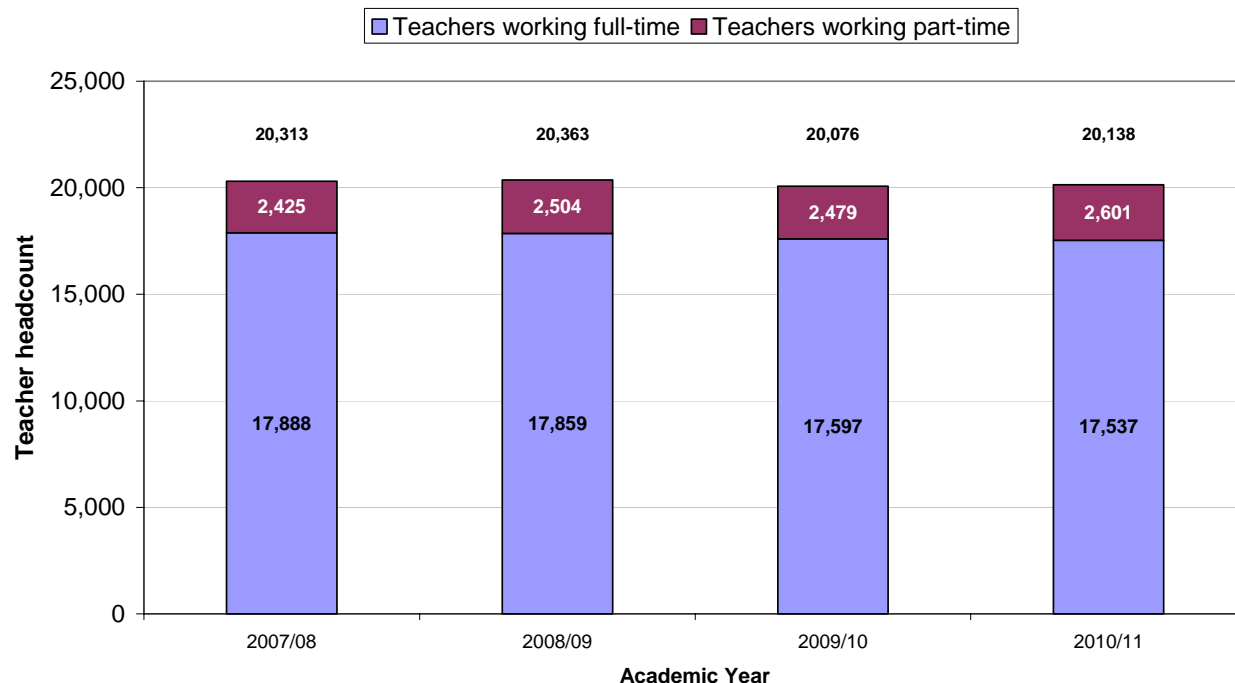
**Figure 1. Full-time equivalent teachers, 2001/02-2010/11**



## 2. Teacher headcount and characteristics

2.1 **Figure 2** shows the teacher headcount for each of the past four years, broken down by full-time/part-time working. The headcount has increased this year by 62 following the previous year's decline of 287. The proportion of teachers working part-time in 2010/11 is 12.9%, up from 11.9% in 2007/08.

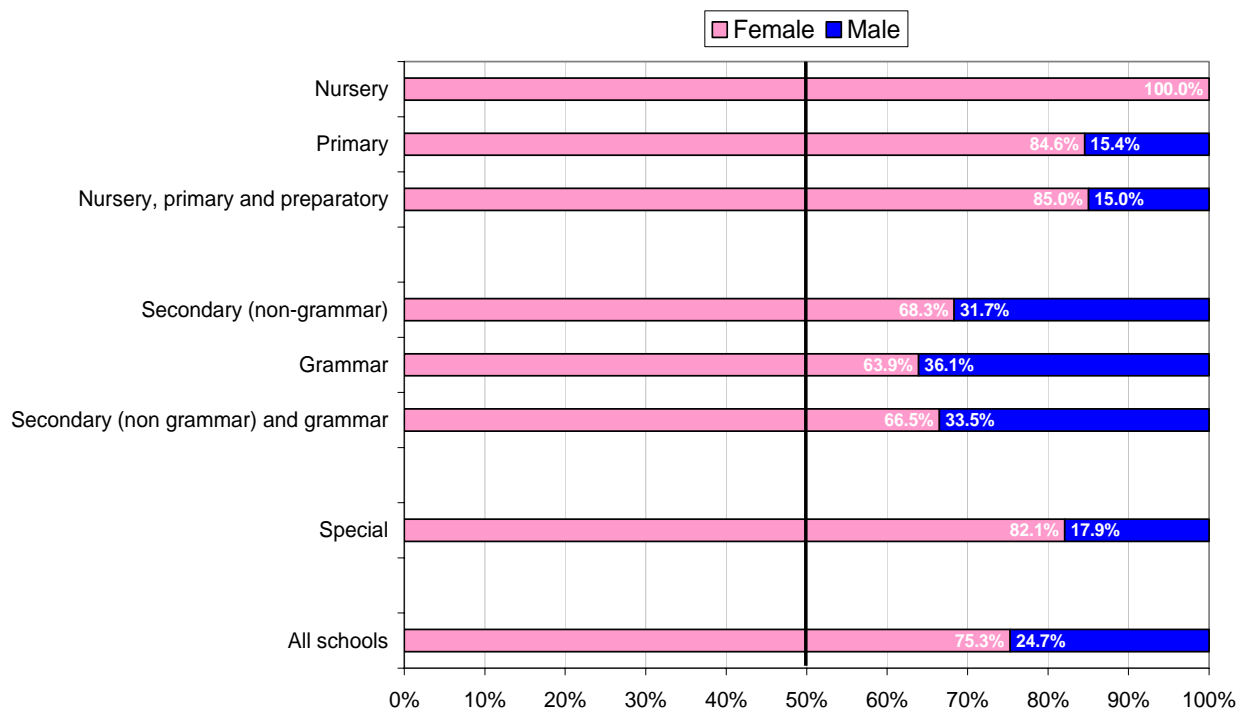
**Figure 2: Teacher headcount, 2007/08-2010/11<sup>1</sup>**



<sup>1</sup> The teacher headcount figures broken down by full-time/ part-time working have been revised for 2007/08 – 2009/10.

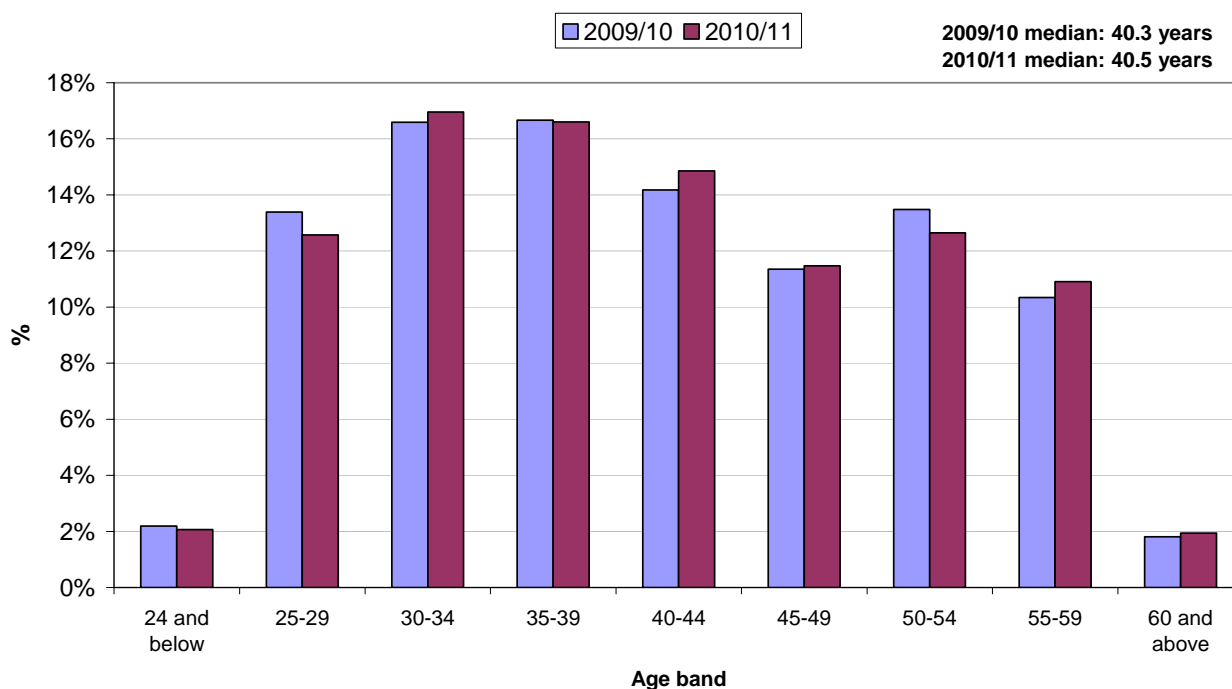
2.2 **Figure 3** shows how the relative proportions of male and female teachers vary by school type. Most notable, is the absence of any male teachers in the nursery sector and the low percentage (15.4%) of male teachers in the primary sector. Comparing the figures to 2009/10, the proportion of male teachers in nursery and special schools has stayed the same, whilst all other school types have seen a decrease in the proportion of male teachers. Overall, the proportions are 75.3% female and 24.7% male, compared to 74.9% of females and 25.1% of males in 2009/10.

**Figure 3: Proportions of female and male teachers, 2010/11**



2.3 **Figure 4** shows the distribution of teachers' ages. The median age in 2010/11 is 40.5 years. There are proportionally fewer teachers aged below 30 this year (14.6%) than last year (15.6%).

**Figure 4: Proportions of teachers by age band, 2009/10 and 2010/11**

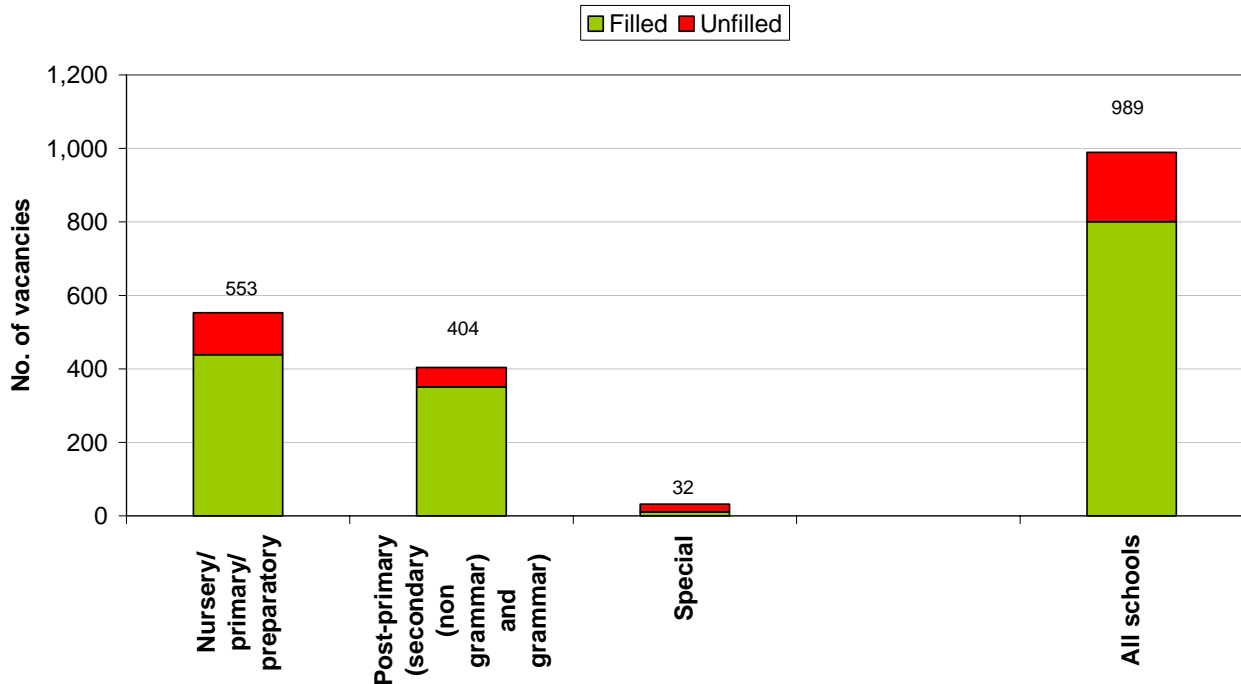


2.4 **Tables 3-6** give breakdowns of unique teachers by gender, age, school type, Education and Library Board, and full-time/part-time working.

### 3. Teacher vacancies

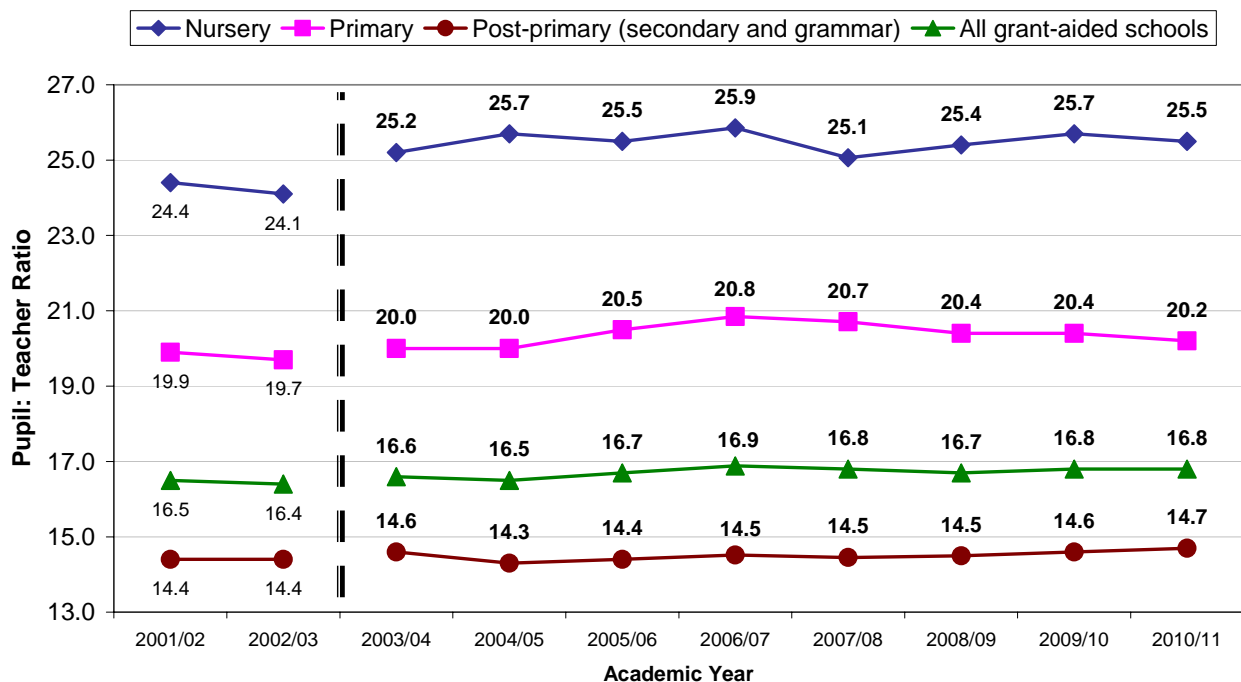
3.1 **Figure 5** shows the total number of teacher vacancies at the end of 2009/10 and the proportions which were filled or unfilled by November 2010. There were fewer vacancies this year than in the previous year, with a larger proportion of unfilled vacancies in nursery, primary and preparatory schools than in post-primary schools. Notably 65.6% of vacancies that arose in special schools were unfilled. **Table 7** outlines the teacher vacancies data in more detail.

Figure 5: Filled and unfilled vacancies by school type, November 2010



### 4. Pupil: Teacher Ratios

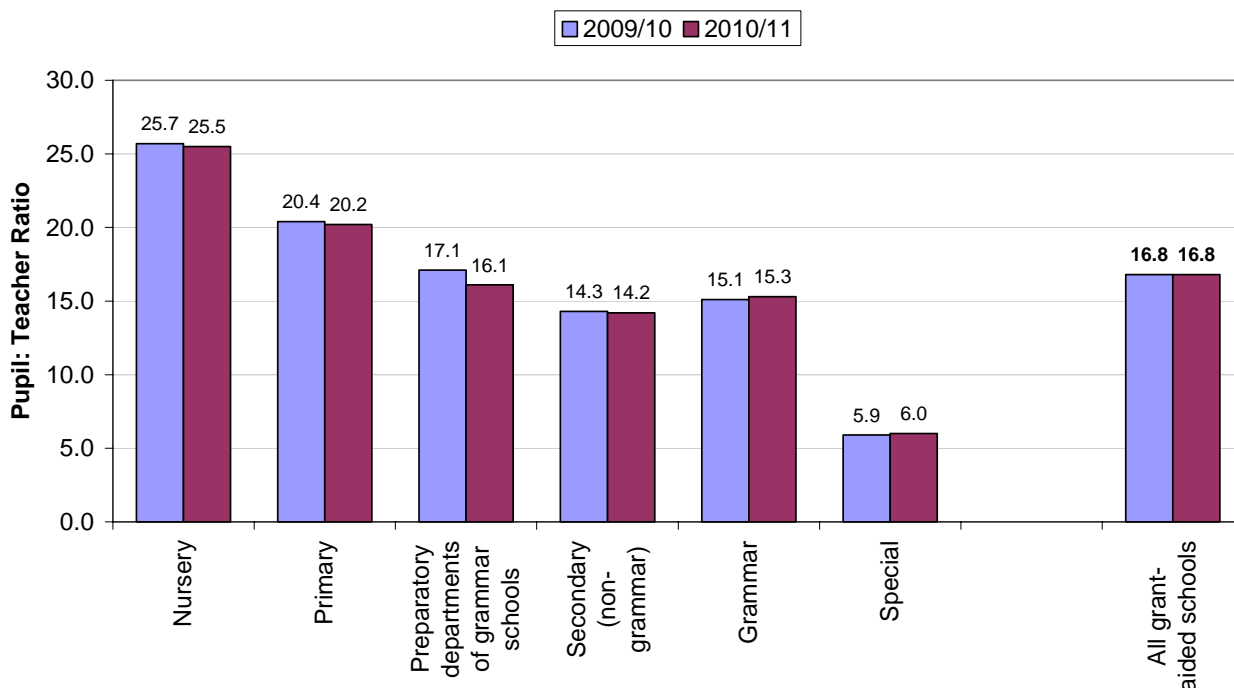
Figure 6: Pupil: Teacher Ratios, 2001/02 - 2010/11<sup>1</sup>



<sup>1</sup> Since 2003/04 the PTR has been compiled using teacher data which has been verified with schools. See Notes to Editors, paragraph 9.

4.1 **Figure 6** shows the PTRs for nursery, primary, and post-primary (secondary (non grammar) and grammar) schools for each of the past ten years. Within the primary sector, the PTR has steadily decreased since 2006/07 from 20.8 to 20.2. Within the post-primary sector the PTR has remained relatively static. This information is also given in **Table 8**.

**Figure 7: Pupil: Teacher Ratio by school sector, 2009/10-2010/11**



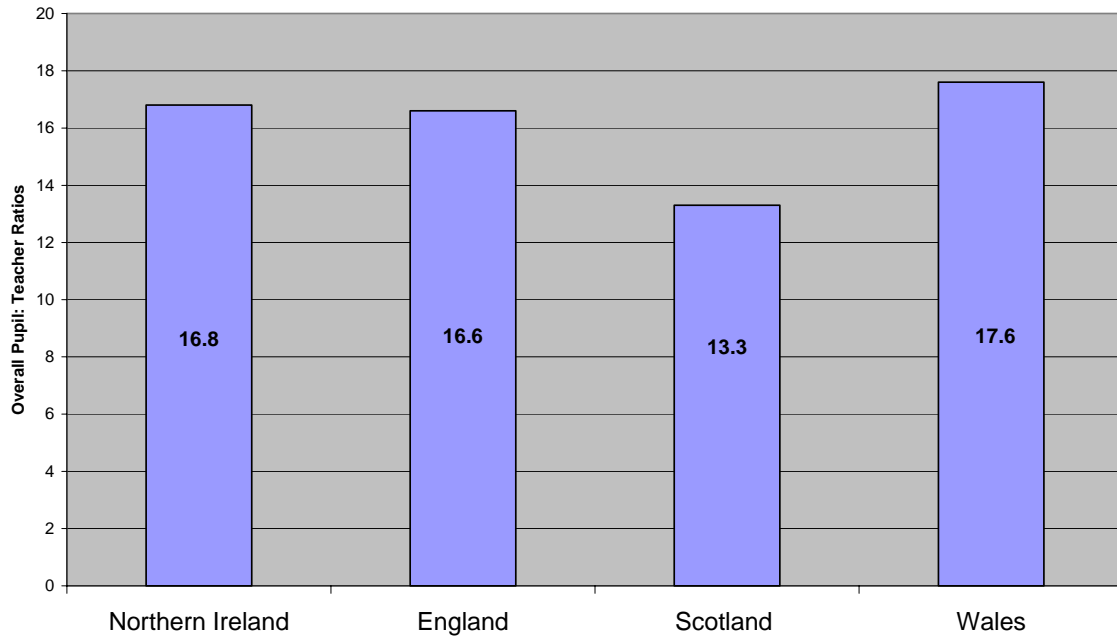
4.2 **Figure 7** shows that the Pupil: Teacher Ratios (PTRs) have risen this year for grammar and special schools. The PTRs have decreased for nursery, primary and secondary (non-grammar) schools, and for the preparatory departments of grammar schools. The sector which had the biggest decrease in PTR was the preparatory departments of grammar schools with a drop of 1.0. The reason for this drop is that the pupil enrolment numbers for this sector have fallen (approximately 220) proportionally more than the number of teachers (approximately 5) between 2009/10 and 2010/11. Pupil enrolment figures for preparatory departments of grammar schools show a fall of 9.3% between 2009/10 and 2010/11 compared to only a 0.1% fall in primary schools.

For further information on enrolment figures please access the link below:

[http://www.deni.gov.uk/enrolments\\_at\\_schools\\_and\\_in\\_funded\\_pre-school\\_education\\_2010\\_11\\_revised .pdf](http://www.deni.gov.uk/enrolments_at_schools_and_in_funded_pre-school_education_2010_11_revised.pdf)

4.3 **Figure 8** shows that the overall Pupil: Teacher Ratio is lower than in Wales, but greater than in England and Scotland. Direct comparisons, however, are not advised, as there are differences in the coverage and scope of the data collections. This information is broken down by school type in **Table 10**.

**Figure 8: Overall Pupil: Teacher Ratios in Northern Ireland, England, Scotland and Wales<sup>1</sup>**



<sup>1</sup> An overall PTR figure for Republic of Ireland is not calculated. See Notes to Editors, paragraph 13.

## **Tables**

- Table 1** Full-time equivalent teacher numbers by school type, school management type and Education and Library Board: 2010/11
- Table 2** Full-time equivalent teacher numbers by school type and school management type: 2001/02 – 2010/11
- Table 3** Unique teacher numbers by gender, age band and Education and Library Board: 2010/11
- Table 4** Unique teacher numbers by full-time/part-time working, age band and Education and Library Board: 2010/11
- Table 5** Unique teacher numbers by gender, full-time/part-time working and Education and Library Board: 2010/11
- Table 6** Unique teacher numbers by gender, age band and school type: 2010/11
- Table 7** Teacher vacancies by school type, grade and employment type: 2010
- Table 8** Pupil: Teacher Ratios by school type and school management type: 2001/02 – 2010/11
- Table 9** Pupil: Teacher Ratios by school type, school management type and Education and Library Board: 2010/11
- Table 10** Pupil: Teacher Ratios in NI, England, Scotland, Wales and Ireland

## **Notes to Editors**

### **National Statistics**

1. These statistics are classified as National Statistics. National Statistics are produced to high professional standards set out in the Code of Practice for Official Statistics. They undergo regular assurance reviews to ensure that they meet customer needs. They are produced free from any political interference.
2. For general enquiries about National Statistics, contact the National Statistics Public Enquiry Service by  
telephone: 0845 601 3034  
minicom: 01633 812399  
e-mail: [info@statistics.gov.uk](mailto:info@statistics.gov.uk)  
fax: 01633 652747  
written correspondence: Customer Contact Centre,  
Room 1.015  
Office for National Statistics  
Cardiff Road  
NEWPORT NP10 8XG
3. You can also find National Statistics on the Internet: [www.statistics.gov.uk](http://www.statistics.gov.uk)

## **Local Management of Schools**

4. Since the introduction of Local Management of Schools (LMS) in 1991/92, all secondary schools have had fully delegated budgets, which means that decisions on staffing levels are taken by the schools themselves. Since 1998/99, all primary schools have also had fully delegated budgets.

## **Pupil: Teacher Ratio and teacher numbers**

5. The teacher numbers are based on a reference week in the autumn term: 22-26 November 2010.
6. The following types of teacher are included when aggregating teacher numbers and calculating the Pupil: Teacher Ratio:
  - full-time permanent teachers;
  - part-time permanent teachers; and
  - temporary teachers filling vacant posts, secondments or career breaks.
7. Excluded from all calculations are:
  - substitute teachers;
  - peripatetic teachers; and
  - classroom support staff.
8. For the Pupil: Teacher Ratio (PTR) calculation, numbers are expressed as full-time equivalents, with part-time hours being converted on the basis that a full-time working week is 32.4 hours.
9. Prior to 2003/04, the figures for nursery, primary, secondary (non-grammar) and special schools were extracted from the computerised teachers' payroll system, whilst the figures for grammar schools were obtained from an aggregate statistical return completed by the schools. Now, every grant-aided school is sent a list of teachers derived from the computerised teachers' payroll system, and asked to mark any amendments. This checking process was introduced from 2003/04 for nursery, primary, secondary (non-grammar) and special schools, from 2005/06 for controlled grammar schools, and from 2007/08 for voluntary grammar schools. The net effect of this change in 2003/04 was that the number of teachers as verified by schools was some 400 lower than the number of teachers extracted from the payroll system, because, for example, substitute teachers had been incorrectly recorded.
10. From 2009/10, schools have been asked to verify the sex and date of birth of their teaching staff.
11. More detail about the collection of teacher workforce statistics may be found at: [http://www.deni.gov.uk/teacher\\_workforce\\_stats\\_info\\_and\\_procedures\\_doc.pdf](http://www.deni.gov.uk/teacher_workforce_stats_info_and_procedures_doc.pdf)

## **Pupil: Teacher Ratio: pupil numbers**

12. Pupil figures are taken from the Annual Schools' Census conducted in October 2010.

13. Pupil figures are expressed as full-time equivalents. A pupil on a part-time attendance mode is counted as 0.5 of a full-time pupil.

## Comparisons

14. Comparisons of PTRs between Education and Library Boards, management types and territories must be interpreted with caution, as differences may be spurious, reflecting other factors such as distributions of school and class sizes, and the proportions of schools of each type (nursery, primary and secondary). There is also variation in the coverage and scope of data collection between territories. Data for England, Wales, Scotland and the Republic of Ireland may also be found at:

<http://www.education.gov.uk/rsgateway/DB/SFR/s000927/index.shtml>

<http://www.statswales.wales.gov.uk/TableViewer/tableView.aspx?ReportId=14001>

<http://www.scotland.gov.uk/Publications/2011/03/04154230/3>

[http://www.education.ie/servlet/blobServlet/stat\\_web\\_stats\\_09\\_10.pdf](http://www.education.ie/servlet/blobServlet/stat_web_stats_09_10.pdf)

## Teacher Vacancies Survey

15. The figures for teacher vacancies are derived from the Teacher Vacancies Survey. This data collection covers all grant-aided schools in Northern Ireland, and was carried out by NISRA Central Survey Unit on behalf of DE Statistics & Research Branch in the autumn term of 2010/11. All figures refer to the position of schools on 1 November 2010.

## Further enquiries

16. Further analyses relating to PTRs and teacher numbers can be found on the DE website at [http://www.deni.gov.uk/index/32-statisticsandresearch\\_pg.htm](http://www.deni.gov.uk/index/32-statisticsandresearch_pg.htm). Statistics on school numbers and enrolment, participation rates, and school leavers' qualifications and destinations may also be accessed via this website.

17. For more details about the statistics contained in this Press Release, or to request bespoke analyses of PTR or teacher data, please contact:

Miss Jennifer McCrea  
Statistics and Research Branch  
Department of Education  
Rathgael House  
Balloo Road  
Rathgill  
BANGOR BT19 7PR

Tel. 028 9127 9638  
Fax 028 9127 9594  
Email [statistics@deni.qsi.gov.uk](mailto:statistics@deni.qsi.gov.uk)

18. DE Statistical Press Releases can be accessed on the DE website at [http://www.deni.gov.uk/index/32-statisticsandresearch\\_pg/32\\_statistical\\_publications-indexofstatisticalpublications\\_pg/32\\_statistical\\_publications\\_pressreleases\\_pg.htm](http://www.deni.gov.uk/index/32-statisticsandresearch_pg/32_statistical_publications-indexofstatisticalpublications_pg/32_statistical_publications_pressreleases_pg.htm)

19. Press enquiries should be made to the Department's Press Office at the same address, telephone 028 9127 9701.

**TABLE 1. FULL-TIME EQUIVALENT (FTE) TEACHERS IN NORTHERN IRELAND BY EDUCATION AND LIBRARY BOARD, SCHOOL TYPE AND MANAGEMENT TYPE: 2010/11**

School type	Management type	Belfast	Western	North Eastern	South Eastern	Southern	Total
Nursery	Controlled	26.0	24.6	32.4	20.6	26.4	130.0
	Catholic Maintained	34.0	-	4.1	14.6	12.3	65.0
	<b>Total</b>	<b>60.0</b>	<b>24.6</b>	<b>36.5</b>	<b>35.2</b>	<b>38.7</b>	<b>195.0</b>
Primary <sup>1</sup>	Controlled	468.1	406.5	1073.2	972.5	712.4	3632.7
	Controlled Integrated	23.8	3.0	61.7	67.8	5.4	161.7
	Catholic Maintained	555.7	919.3	565.8	519.3	1105.0	3665.1
	Grant Maintained Integrated	29.8	55.5	58.8	59.1	56.4	259.6
	Other Maintained	60.7	28.0	23.9	12.2	30.1	154.9
<b>Total</b>	<b>1138.2</b>	<b>1412.2</b>	<b>1783.3</b>	<b>1631.0</b>	<b>1909.3</b>	<b>7874.0</b>	
Preparatory departments of grammar schools	Controlled	-	-	-	19.5	-	19.5
	Voluntary	75.9	-	5.6	31.2	3.0	115.7
	<b>Total</b>	<b>75.9</b>	<b>-</b>	<b>5.6</b>	<b>50.7</b>	<b>3.0</b>	<b>135.2</b>
Secondary (excluding grammar)	Controlled	242.2	249.2	636.5	472.8	582.5	2183.2
	Controlled Integrated	-	-	65.0	99.4	31.1	195.5
	Catholic Maintained	564.5	718.6	495.3	324.9	825.1	2928.4
	Grant Maintained Integrated	114.3	136.7	165.6	184.9	69.9	671.3
	Other Maintained	43.9	-	-	-	-	43.9
<b>Total</b>	<b>964.9</b>	<b>1104.5</b>	<b>1362.4</b>	<b>1082.0</b>	<b>1508.6</b>	<b>6022.3</b>	
Grammar schools	Controlled	119.5	161.9	303.3	219.9	167.6	972.2
	Voluntary	944.1	550.5	563.9	464.2	567.8	3090.5
	<b>Total</b>	<b>1063.6</b>	<b>712.4</b>	<b>867.1</b>	<b>684.1</b>	<b>735.4</b>	<b>4062.7</b>
<b>Post-primary total</b>		<b>2028.5</b>	<b>1816.9</b>	<b>2229.5</b>	<b>1766.1</b>	<b>2244.0</b>	<b>10085.0</b>
Special (excluding hospital schools)	Controlled	189.5	113.3	144.2	173.7	70.1	690.8
	Catholic Maintained	43.3	-	-	-	-	43.3
	Other Maintained	-	-	14.3	-	-	14.3
	<b>Total</b>	<b>232.8</b>	<b>113.3</b>	<b>158.6</b>	<b>173.7</b>	<b>70.1</b>	<b>748.4</b>
All grant-aided schools	Controlled	1045.4	955.5	2189.6	1879.0	1559.0	7628.4
	Controlled Integrated	23.8	3.0	126.7	167.2	36.5	357.2
	Catholic Maintained	1197.5	1637.9	1065.2	858.9	1942.4	6701.8
	Grant Maintained Integrated	144.1	192.2	224.4	244.0	126.3	930.9
	Other Maintained	104.6	28.0	38.3	12.2	30.1	213.2
	Voluntary	1019.9	550.5	569.4	495.4	570.8	3206.1
<b>Grand total</b>		<b>3535.2</b>	<b>3367.0</b>	<b>4213.5</b>	<b>3656.7</b>	<b>4265.1</b>	<b>19037.6</b>

<sup>1</sup> includes teachers in nursery classes

- indicates no schools in this category

**TABLE 2. FULL-TIME EQUIVALENT (FTE) TEACHERS IN NORTHERN IRELAND BY SCHOOL TYPE AND MANAGEMENT TYPE: 2001/02 - 2010/11**

School type	Management type	<i>Unverified basis</i>			<i>New (verified) basis</i>							
		2001/02	2002/03	2003/04	2003/04	2004/05	2005/06	2006/07	2007/08	2008/09	2009/10	2010/11
Nursery	Controlled	135.5	140.0	137.0	132.2	129.3	129.3	126.0	129.9	128.3	127.2	130.0
	Catholic Maintained	59.0	65.9	67.1	65.5	63.8	66.1	65.3	66.9	65.5	64.7	65.0
	<b>Total</b>	<b>194.5</b>	<b>205.9</b>	<b>204.1</b>	<b>197.7</b>	<b>193.1</b>	<b>195.4</b>	<b>191.3</b>	<b>196.7</b>	<b>193.9</b>	<b>191.9</b>	<b>195.0</b>
Primary <sup>1</sup>	Controlled	4,227.4	4,203.4	4,165.9	4,050.4	3,996.2	3,845.4	3,749.1	3,702.1	3,687.8	3,621.2	3632.7
	Controlled Integrated	81.2	84.5	104.9	101.8	108.4	111.5	107.3	118.8	126.7	145.8	161.7
	Catholic Maintained	4,168.1	4,154.1	4,126.1	4,007.8	3,910.5	3,751.5	3,627.5	3,622.2	3,654.5	3,638.1	3665.1
	Grant Maintained Integrated	206.4	206.4	212.0	206.0	221.5	230.7	237.4	253.8	259.9	260.1	259.6
	Other Maintained	97.3	104.3	114.0	115.1	115.9	124.2	132.2	136.3	143.8	143.1	154.9
<b>Total</b>	<b>8,780.4</b>	<b>8,752.6</b>	<b>8,723.0</b>	<b>8,481.1</b>	<b>8,352.7</b>	<b>8,063.3</b>	<b>7,853.5</b>	<b>7,833.2</b>	<b>7,872.7</b>	<b>7,808.3</b>	<b>7874.0</b>	
Preparatory departments of grammar schools	Controlled	22.9	23.6	23.7	23.7	23.0	19.9	20.1	19.4	19.4	20.9	19.5
	Voluntary	137.1	130.2	130.0	130.0	126.1	125.1	125.7	126.0	126.2	119.5	115.7
	<b>Total</b>	<b>160.0</b>	<b>153.8</b>	<b>153.7</b>	<b>153.7</b>	<b>149.1</b>	<b>145.0</b>	<b>145.9</b>	<b>145.4</b>	<b>145.4</b>	<b>140.5</b>	<b>135.2</b>
Secondary (excluding grammar)	Controlled	2,729.3	2,739.3	2,707.7	2,633.6	2,615.4	2,523.3	2,446.8	2,383.4	2,329.6	2,207.1	2183.2
	Controlled Integrated	150.2	150.6	147.7	146.6	152.4	150.2	150.2	177.6	157.7	198.4	195.5
	Catholic Maintained	3,228.5	3,222.4	3,214.9	3,138.6	3,140.9	3,099.5	2,982.7	2,919.4	2,894.6	2,847.4	2928.4
	Grant Maintained Integrated	559.3	574.9	583.7	568.6	585.7	609.5	624.3	642.3	683.3	672.0	671.3
	Other Maintained	30.6	34.6	35.4	35.4	32.9	37.0	37.3	37.0	45.5	45.0	43.9
<b>Total</b>	<b>6,697.9</b>	<b>6,721.8</b>	<b>6,689.4</b>	<b>6,522.7</b>	<b>6,527.2</b>	<b>6,419.5</b>	<b>6,241.2</b>	<b>6,159.9</b>	<b>6,110.6</b>	<b>5,969.9</b>	<b>6022.3</b>	
Grammar schools	Controlled	960.5	952.2	961.5	961.5	967.0	958.6	946.3	948.7	972.4	980.5	972.2
	Voluntary	3,150.2	3,165.9	3,195.7	3,195.7	3,203.8	3,130.9	3,127.2	3,127.4	3,147.3	3,156.7	3090.5
	<b>Total</b>	<b>4,110.8</b>	<b>4,118.2</b>	<b>4,157.2</b>	<b>4,157.2</b>	<b>4,170.8</b>	<b>4,089.5</b>	<b>4,073.4</b>	<b>4,076.1</b>	<b>4,119.7</b>	<b>4,137.2</b>	<b>4062.7</b>
<b>Post-primary schools</b>	<b>10,808.7</b>	<b>10,840.0</b>	<b>10,846.6</b>	<b>10,679.8</b>	<b>10,698.1</b>	<b>10,509.0</b>	<b>10,314.6</b>	<b>10,235.9</b>	<b>10,230.3</b>	<b>10,107.0</b>	<b>10085.0</b>	
Special (excluding hospital schools)	Controlled	728.1	747.4	758.7	749.1	731.5	719.6	712.3	698.6	705.4	689.1	690.8
	Catholic Maintained	46.9	45.9	50.6	49.4	49.2	47.8	44.3	46.3	46.2	43.4	43.3
	Other Maintained	28.1	26.0	24.2	24.2	24.4	22.5	17.3	20.3	15.7	16.7	14.3
	<b>Total</b>	<b>803.1</b>	<b>819.3</b>	<b>833.5</b>	<b>822.7</b>	<b>805.1</b>	<b>789.8</b>	<b>774.0</b>	<b>765.1</b>	<b>767.4</b>	<b>749.3</b>	<b>748.4</b>
All grant-aided schools	Controlled	8,803.6	8,805.9	8,754.5	8,550.5	8,462.5	8,196.1	8,000.6	7,882.0	7,842.9	7,646.1	7628.4
	Controlled Integrated	231.4	235.1	252.6	248.4	260.8	261.7	257.5	296.4	284.4	344.2	357.2
	Catholic Maintained	7,502.5	7,488.2	7,458.8	7,261.3	7,164.4	6,964.9	6,719.9	6,654.8	6,660.8	6,593.5	6701.8
	Grant Maintained Integrated	765.7	781.3	795.6	774.5	807.2	840.2	861.7	896.1	943.2	932.1	930.9
	Other Maintained	156.0	164.9	173.6	174.7	173.3	183.7	186.8	193.7	205.0	204.9	213.2
	Voluntary	3,287.3	3,296.1	3,325.7	3,325.7	3,329.9	3,256.0	3,252.9	3,253.4	3,273.5	3,276.2	3206.1
	<b>Grand total</b>	<b>20,746.6</b>	<b>20,771.6</b>	<b>20,760.9</b>	<b>20,335.1</b>	<b>20,198.1</b>	<b>19,702.6</b>	<b>19,279.2</b>	<b>19,176.4</b>	<b>19,209.8</b>	<b>18,996.9</b>	<b>19037.6</b>

<sup>1</sup> includes teachers in nursery classes

**TABLE 3. TEACHERS IN NORTHERN IRELAND BY SEX, AGE BAND AND EDUCATION AND LIBRARY BOARD<sup>1</sup>: 2010/11**

Sex	Age group	Belfast	Western	North Eastern	South Eastern	Southern	Total
Male	24 and under	17	5	31	17	21	91
	25-29	103	62	124	100	105	494
	30-34	150	102	169	132	175	728
	35-39	173	130	152	133	152	740
	40-44	114	153	149	122	161	699
	45-49	123	143	121	114	165	666
	50-54	148	147	135	129	169	728
	55-59	125	113	150	152	134	674
	60 and above	30	49	31	22	26	158
<b>Total</b>		<b>983</b>	<b>904</b>	<b>1,062</b>	<b>921</b>	<b>1,108</b>	<b>4,978</b>
Female	24 and under	49	44	106	64	61	324
	25-29	373	317	499	402	447	2,038
	30-34	459	459	671	535	562	2,686
	35-39	484	458	542	474	645	2,603
	40-44	392	419	484	447	550	2,292
	45-49	307	305	323	325	383	1,643
	50-54	347	310	403	357	402	1,819
	55-59	260	239	364	365	295	1,523
	60 and above	63	28	44	52	45	232
<b>Total</b>		<b>2,734</b>	<b>2,579</b>	<b>3,436</b>	<b>3,021</b>	<b>3,390</b>	<b>15,160</b>
All	24 and under	66	49	137	81	82	415
	25-29	476	379	623	502	552	2,532
	30-34	609	561	840	667	737	3,414
	35-39	657	588	694	607	797	3,343
	40-44	506	572	633	569	711	2,991
	45-49	430	448	444	439	548	2,309
	50-54	495	457	538	486	571	2,547
	55-59	385	352	514	517	429	2,197
	60 and above	93	77	75	74	71	390
<b>Total</b>		<b>3,717</b>	<b>3,483</b>	<b>4,498</b>	<b>3,942</b>	<b>4,498</b>	<b>20,138</b>

<sup>1</sup> Teachers employed at more than one school are counted at the school at which they work the majority of their time.

**TABLE 4. TEACHERS IN NORTHERN IRELAND BY FULL-TIME/PART-TIME WORKING, AGE BAND AND EDUCATION AND LIBRARY BOARD<sup>1</sup>: 2010/11**

Mode of working	Age group	Belfast	Western	North Eastern	South Eastern	Southern	Total
Full-time	24 and under	63	39	114	72	67	355
	25-29	448	343	570	458	495	2,314
	30-34	550	509	724	556	664	3,003
	35-39	560	530	554	481	670	2,795
	40-44	438	524	513	440	605	2,520
	45-49	378	421	388	364	487	2,038
	50-54	445	429	470	428	510	2,282
	55-59	341	335	430	435	377	1,918
	60 and above	75	67	58	58	54	312
<b>Total</b>		<b>3,298</b>	<b>3,197</b>	<b>3,821</b>	<b>3,292</b>	<b>3,929</b>	<b>17,537</b>
Part-time	24 and under	3	10	23	9	15	60
	25-29	28	36	53	44	57	218
	30-34	59	52	116	111	73	411
	35-39	97	58	140	126	127	548
	40-44	68	48	120	129	106	471
	45-49	52	27	56	75	61	271
	50-54	50	28	68	58	61	265
	55-59	44	17	84	82	52	279
	60 and above	18	10	17	16	17	78
<b>Total</b>		<b>419</b>	<b>286</b>	<b>677</b>	<b>650</b>	<b>569</b>	<b>2,601</b>
All	24 and under	66	49	137	81	82	415
	25-29	476	379	623	502	552	2,532
	30-34	609	561	840	667	737	3,414
	35-39	657	588	694	607	797	3,343
	40-44	506	572	633	569	711	2,991
	45-49	430	448	444	439	548	2,309
	50-54	495	457	538	486	571	2,547
	55-59	385	352	514	517	429	2,197
	60 and above	93	77	75	74	71	390
<b>Total</b>		<b>3,717</b>	<b>3,483</b>	<b>4,498</b>	<b>3,942</b>	<b>4,498</b>	<b>20,138</b>

<sup>1</sup> Teachers employed at more than one school are counted at the school at which they work the majority of their time.

**TABLE 5. TEACHERS IN NORTHERN IRELAND BY SEX, FULL-TIME/PART-TIME WORKING AND EDUCATION AND LIBRARY BOARD<sup>1</sup>: 2010/11**

Sex	Mode of working	Belfast	Western	North Eastern	South Eastern	Southern	Total
Male	Full-time	952	882	1,027	898	1,078	4,837
	Part-time	31	22	35	23	30	141
	<b>Total</b>	983	904	1,062	921	1,108	4,978
Female	Full-time	2,346	2,315	2,794	2,394	2,851	12,700
	Part-time	388	264	642	627	539	2,460
	<b>Total</b>	2,734	2,579	3,436	3,021	3,390	15,160
All	Full-time	3,298	3,197	3,821	3,292	3,929	17,537
	Part-time	419	286	677	650	569	2,601
	<b>Total</b>	3,717	3,483	4,498	3,942	4,498	20,138

<sup>1</sup> Teachers employed at more than one school are counted at the school at which they work the majority of their time.

**TABLE 6. TEACHERS IN NORTHERN IRELAND BY SEX, AGE BAND AND SCHOOL TYPE<sup>1</sup>: 2010/11**

Sex	Age group	Nursery	Primary	Preparatory	Secondary	Grammar	Special	Total
Male	24 and under	0	34	0	27	29	1	91
	25-29	0	141	3	185	151	14	494
	30-34	0	167	1	321	220	19	728
	35-39	0	188	2	303	232	15	740
	40-44	0	200	2	252	224	21	699
	45-49	0	212	2	234	200	18	666
	50-54	0	166	2	314	221	25	728
	55-59	0	161	3	277	209	24	674
	60 and above	0	38	1	62	51	6	158
<b>Total</b>	0	1,307	16	1,975	1,537	143	4,978	
Female	24 and under	2	166	1	99	48	8	324
	25-29	19	972	12	604	352	79	2,038
	30-34	22	1,129	22	909	504	100	2,686
	35-39	28	1,217	17	735	504	102	2,603
	40-44	33	1,208	25	552	394	80	2,292
	45-49	28	799	17	433	316	50	1,643
	50-54	46	792	23	513	354	91	1,819
	55-59	29	770	22	372	212	118	1,523
	60 and above	4	113	2	47	39	27	232
<b>Total</b>	211	7,166	141	4,264	2,723	655	15,160	
All	24 and under	2	200	1	126	77	9	415
	25-29	19	1,113	15	789	503	93	2,532
	30-34	22	1,296	23	1,230	724	119	3,414
	35-39	28	1,405	19	1,038	736	117	3,343
	40-44	33	1,408	27	804	618	101	2,991
	45-49	28	1,011	19	667	516	68	2,309
	50-54	46	958	25	827	575	116	2,547
	55-59	29	931	25	649	421	142	2,197
	60 and above	4	151	3	109	90	33	390
<b>Total</b>	211	8,473	157	6,239	4,260	798	20,138	

<sup>1</sup> Teachers employed at more than one school are counted at the school at which they work the majority of their time.

**TABLE 7. TEACHER VACANCIES IN GRANT-AIDED SCHOOLS IN NORTHERN IRELAND, 2010**

School type	Grade of teacher	Permanent positions			Temporary positions			All positions		
		Filled	Unfilled	% filled	Filled	Unfilled	% filled	Filled	Unfilled	% filled
Nursery, primary and preparatory schools	Principal	25	8	75.8%	4	1	80.0%	29	9	76.3%
	Vice-principal	14	7	66.7%	6	2	75.0%	20	9	69.0%
	Classroom teacher	172	54	76.1%	218	42	83.8%	390	96	80.2%
	<b>All teachers</b>	211	69	75.4%	228	45	83.5%	439	114	79.4%
Post-primary (secondary (non grammar) and grammar)	Principal	8	1	88.9%	4	0	100.0%	12	1	92.3%
	Vice-principal	8	4	66.7%	1	0	100.0%	9	4	69.2%
	Classroom teacher	167	25	87.0%	163	23	87.6%	330	48	87.3%
	<b>All teachers</b>	183	30	85.9%	168	23	88.0%	351	53	86.9%
Special schools	Principal	0	1	0.0%	1	0	100.0%	1	1	50.0%
	Vice-principal	0	4	0.0%	0	0	-	0	4	0.0%
	Classroom teacher	4	11	26.7%	6	5	54.5%	10	16	38.5%
	<b>All teachers</b>	4	16	20.0%	7	5	58.3%	11	21	34.4%
All grant-aided schools	Principal	33	10	76.7%	9	1	90.0%	42	11	79.2%
	Vice-principal	22	15	59.5%	7	2	77.8%	29	17	63.0%
	Classroom teacher	343	90	79.2%	387	70	84.7%	730	160	82.0%
	<b>All teachers</b>	398	115	77.6%	403	73	84.7%	801	188	81.0%

**TABLE 8. PUPIL: TEACHER RATIOS IN NORTHERN IRELAND BY SCHOOL TYPE AND MANAGEMENT TYPE: 2001/02 - 2010/11**

School Type	Management Type	<i>Unverified basis</i>			<i>New (verified) basis</i>							
		2001/02	2002/03	2003/04	2003/04	2004/05	2005/06	2006/07	2007/08	2008/09	2009/10	2010/11
Nursery	Controlled	23.9	23.5	24.3	25.2	25.5	25.6	25.8	24.9	25.2	25.4	25.2
	Catholic Maintained	25.5	25.2	24.5	25.1	26.1	25.4	26.0	25.3	25.9	26.2	26.2
	<b>Total</b>	<b>24.4</b>	<b>24.1</b>	<b>24.4</b>	<b>25.2</b>	<b>25.7</b>	<b>25.5</b>	<b>25.9</b>	<b>25.1</b>	<b>25.4</b>	<b>25.7</b>	<b>25.5</b>
Primary <sup>1</sup>	Controlled	20.2	20.0	19.7	20.3	20.2	20.6	20.8	20.7	20.4	20.5	20.4
	Controlled Integrated	18.4	17.8	17.3	17.8	18.4	18.4	19.5	19.0	19.2	20.7	20.0
	Catholic Maintained	19.7	19.4	19.2	19.8	19.9	20.5	21.0	20.9	20.5	20.4	20.2
	Grant Maintained Integrated	19.8	20.7	20.9	21.5	20.9	20.8	21.2	20.5	20.6	21.1	21.4
	Other Maintained	17.2	17.8	17.7	17.6	18.2	17.4	17.1	16.7	16.3	16.8	16.6
	<b>Total</b>	<b>19.9</b>	<b>19.7</b>	<b>19.4</b>	<b>20.0</b>	<b>20.0</b>	<b>20.5</b>	<b>20.8</b>	<b>20.7</b>	<b>20.4</b>	<b>20.4</b>	<b>20.2</b>
Preparatory departments of grammar schools	Controlled	18.4	18.1	17.0	17.0	16.8	18.6	16.6	17.3	17.8	16.5	15.4
	Voluntary	16.6	17.1	17.0	17.0	17.4	17.3	16.8	16.8	16.7	17.2	16.2
	<b>Total</b>	<b>16.9</b>	<b>17.2</b>	<b>17.0</b>	<b>17.0</b>	<b>17.3</b>	<b>17.5</b>	<b>16.8</b>	<b>16.9</b>	<b>16.9</b>	<b>17.1</b>	<b>16.1</b>
Secondary (excluding grammar)	Controlled	14.0	13.8	13.8	14.2	13.9	14.1	14.2	13.9	14.1	14.4	14.4
	Controlled Integrated	13.1	13.3	13.6	13.7	13.4	13.7	13.3	13.0	13.3	13.9	13.8
	Catholic Maintained	13.9	13.9	13.8	14.1	13.7	13.8	13.9	14.0	14.1	14.4	14.2
	Grant Maintained Integrated	13.0	13.5	13.8	14.2	14.1	13.9	14.0	13.9	13.7	13.9	14.0
	Other Maintained	11.2	10.5	11.5	11.5	13.4	12.7	13.1	13.7	11.3	12.5	12.6
	<b>Total</b>	<b>13.8</b>	<b>13.8</b>	<b>13.8</b>	<b>14.1</b>	<b>13.8</b>	<b>13.9</b>	<b>14.0</b>	<b>13.9</b>	<b>14.0</b>	<b>14.3</b>	<b>14.2</b>
Grammar	Controlled	15.4	15.7	15.5	15.5	15.4	15.5	15.6	15.7	15.3	15.2	15.3
	Voluntary	15.2	15.2	15.2	15.2	15.1	15.2	15.2	15.2	15.1	15.1	15.3
	<b>Total</b>	<b>15.3</b>	<b>15.3</b>	<b>15.2</b>	<b>15.2</b>	<b>15.2</b>	<b>15.3</b>	<b>15.3</b>	<b>15.3</b>	<b>15.1</b>	<b>15.1</b>	<b>15.3</b>
<b>Post-primary total</b>	<b>14.4</b>	<b>14.4</b>	<b>14.3</b>	<b>14.6</b>	<b>14.3</b>	<b>14.4</b>	<b>14.5</b>	<b>14.5</b>	<b>14.5</b>	<b>14.6</b>	<b>14.7</b>	
Special (excluding hospital schools)	Controlled	6.0	6.1	6.0	6.0	6.0	6.0	6.0	6.2	6.1	6.1	6.1
	Catholic Maintained	5.3	5.2	4.4	4.6	4.7	5.1	5.3	5.2	5.1	4.2	3.9
	Other Maintained	3.7	3.6	3.8	3.8	3.5	3.2	3.8	2.9	3.4	2.8	3.1
	<b>Total</b>	<b>5.9</b>	<b>6.0</b>	<b>5.8</b>	<b>5.9</b>	<b>5.8</b>	<b>5.8</b>	<b>5.9</b>	<b>6.0</b>	<b>6.0</b>	<b>5.9</b>	<b>6.0</b>
All grant-aided schools	Controlled	16.6	16.4	16.3	16.7	16.5	16.8	16.9	16.8	16.7	16.8	16.8
	Controlled Integrated	14.9	14.9	15.1	15.4	15.5	15.7	15.9	15.4	15.9	16.8	16.6
	Catholic Maintained	17.2	17.0	16.8	17.3	17.1	17.5	17.8	17.8	17.7	17.7	17.6
	Grant Maintained Integrated	14.8	15.4	15.7	16.1	15.9	15.8	16.0	15.8	15.6	15.9	16.1
	Other Maintained	13.6	14.1	14.5	14.4	15.2	14.7	15.1	14.7	14.2	14.7	14.8
	Voluntary	15.3	15.3	15.2	15.2	15.2	15.3	15.2	15.2	15.2	15.1	15.3
	<b>Grand total</b>	<b>16.5</b>	<b>16.4</b>	<b>16.3</b>	<b>16.6</b>	<b>16.5</b>	<b>16.7</b>	<b>16.9</b>	<b>16.8</b>	<b>16.7</b>	<b>16.8</b>	<b>16.8</b>

<sup>1</sup> includes pupils and teachers in nursery classes

**TABLE 9. PUPIL: TEACHER RATIOS IN NORTHERN IRELAND BY EDUCATION AND LIBRARY BOARD, SCHOOL TYPE AND MANAGEMENT TYPE: 2010/11**

School type	Management type	Belfast	Western	North Eastern	South Eastern	Southern	Total
Nursery	Controlled	26.3	25.4	23.3	25.3	26.0	25.2
	Catholic Maintained	26.1	-	25.9	27.1	25.4	26.2
	<b>Total</b>	<b>26.2</b>	<b>25.4</b>	<b>23.6</b>	<b>26.0</b>	<b>25.8</b>	<b>25.5</b>
Primary <sup>1</sup>	Controlled	20.3	20.0	20.6	20.5	20.0	20.4
	Controlled Integrated	18.3	13.7	19.5	21.7	16.9	20.0
	Catholic Maintained	20.2	20.5	20.2	19.7	20.3	20.2
	Grant Maintained Integrated	21.5	20.6	21.4	21.2	22.2	21.4
	Other Maintained	17.0	16.6	13.1	13.5	19.5	16.6
	<b>Total</b>	<b>20.1</b>	<b>20.2</b>	<b>20.4</b>	<b>20.3</b>	<b>20.2</b>	<b>20.2</b>
Preparatory departments of grammar schools	Controlled	-	-	-	15.4	-	15.4
	Voluntary	16.4	-	14.1	16.5	14.3	16.2
	<b>Total</b>	<b>16.4</b>	<b>-</b>	<b>14.1</b>	<b>16.1</b>	<b>14.3</b>	<b>16.1</b>
Secondary (excluding grammar)	Controlled	14.4	14.1	14.3	14.2	14.7	14.4
	Controlled Integrated	-	-	14.0	13.9	13.3	13.8
	Catholic Maintained	13.8	14.0	14.3	14.2	14.7	14.2
	Grant Maintained Integrated	14.1	14.1	13.7	14.1	14.6	14.0
	Other Maintained	12.6	-	-	-	-	12.6
	<b>Total</b>	<b>13.9</b>	<b>14.1</b>	<b>14.2</b>	<b>14.1</b>	<b>14.6</b>	<b>14.2</b>
Grammar schools	Controlled	15.6	15.1	15.2	15.6	15.2	15.3
	Voluntary	15.4	15.4	15.1	15.0	15.5	15.3
	<b>Total</b>	<b>15.4</b>	<b>15.3</b>	<b>15.1</b>	<b>15.2</b>	<b>15.4</b>	<b>15.3</b>
<b>Post-primary total</b>		<b>14.7</b>	<b>14.6</b>	<b>14.6</b>	<b>14.6</b>	<b>14.9</b>	<b>14.7</b>
Special (excluding hospital schools)	Controlled	5.8	5.6	6.6	6.2	6.7	6.1
	Catholic Maintained	3.9	-	-	-	-	3.9
	Other Maintained	-	-	3.1	-	-	3.1
	<b>Total</b>	<b>5.5</b>	<b>5.6</b>	<b>6.3</b>	<b>6.2</b>	<b>6.7</b>	<b>6.0</b>
All grant-aided schools	Controlled	15.9	16.1	17.2	17.0	17.0	16.8
	Controlled Integrated	18.3	13.7	16.7	17.1	13.8	16.6
	Catholic Maintained	16.8	17.6	17.5	17.7	17.9	17.6
	Grant Maintained Integrated	15.6	15.9	15.7	15.8	18.0	16.1
	Other Maintained	15.2	16.6	9.4	13.5	19.5	14.8
	Voluntary	15.4	15.4	15.0	15.1	15.5	15.3
	<b>Grand total</b>	<b>16.0</b>	<b>16.7</b>	<b>16.8</b>	<b>16.8</b>	<b>17.2</b>	<b>16.8</b>

<sup>1</sup> includes pupils and teachers in nursery classes

- indicates no schools in this category

**TABLE 10. PUPIL: TEACHER RATIOS IN NORTHERN IRELAND, ENGLAND, SCOTLAND, WALES AND REPUBLIC OF IRELAND**

	<b>NI</b>	<b>England<sup>2</sup></b>	<b>Scotland<sup>3</sup></b>	<b>Wales<sup>4</sup></b>	<b>Ireland<sup>5</sup></b>
Nursery	25.5	16.2	n/a	15.1	n/a
Primary	20.2	21.3	15.8	20.1	16.0
Post-primary	14.7	15.7	12.1	16.5	13.6
<b>Overall</b>	<b>16.8</b>	<b>16.6</b>	<b>13.3</b>	<b>17.6</b>	<b>n/a</b>

<sup>1</sup> Most recently published. NI and Scotland refer to 2010/11. England, Wales and Ireland refer to 2009/10

<sup>2</sup> Source: Department for Education, 'School Workforce in England, January 2010. Published May 2010. Census date January 2010.

<sup>3</sup> Source: Summary Statistics for Schools in Scotland, No 1 2010 Edition: 1<sup>st</sup> December 2010 (Revised 3<sup>rd</sup> March 2011).

<sup>4</sup> Source: Statswales – 'Key Education Statistics Wales 2010'.

<sup>5</sup> Source: Department of Education and Science, 'Education Statistics 2009/2010'.